



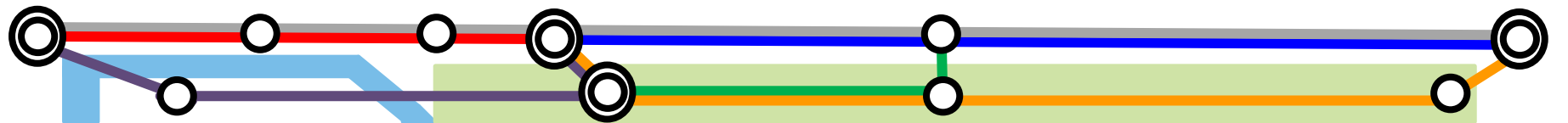
# Multi-Modal, Safety Action Team (SAT)

**Elliott Shepherd**

Chief, Program Operations Division

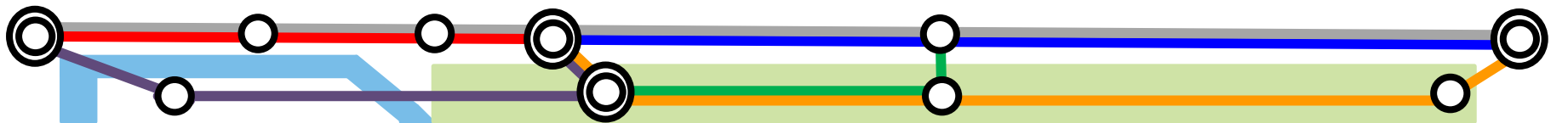
Office of Transit Safety and Oversight

Federal Transit Administration



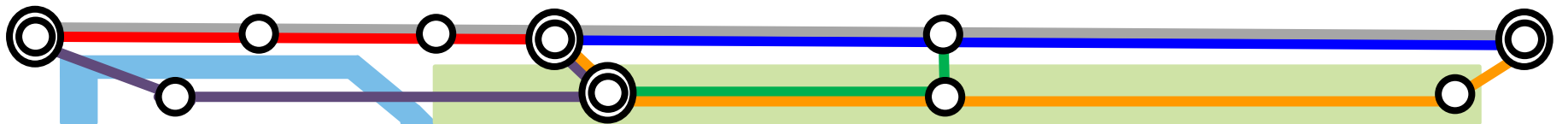
# Agenda

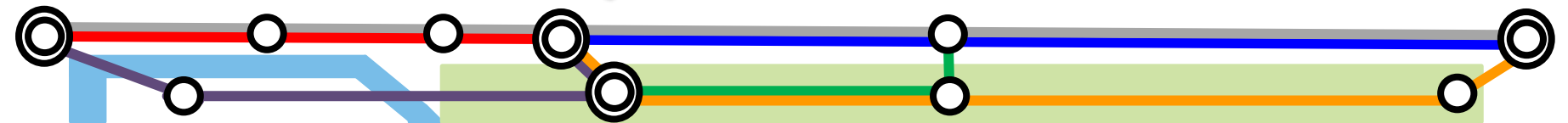
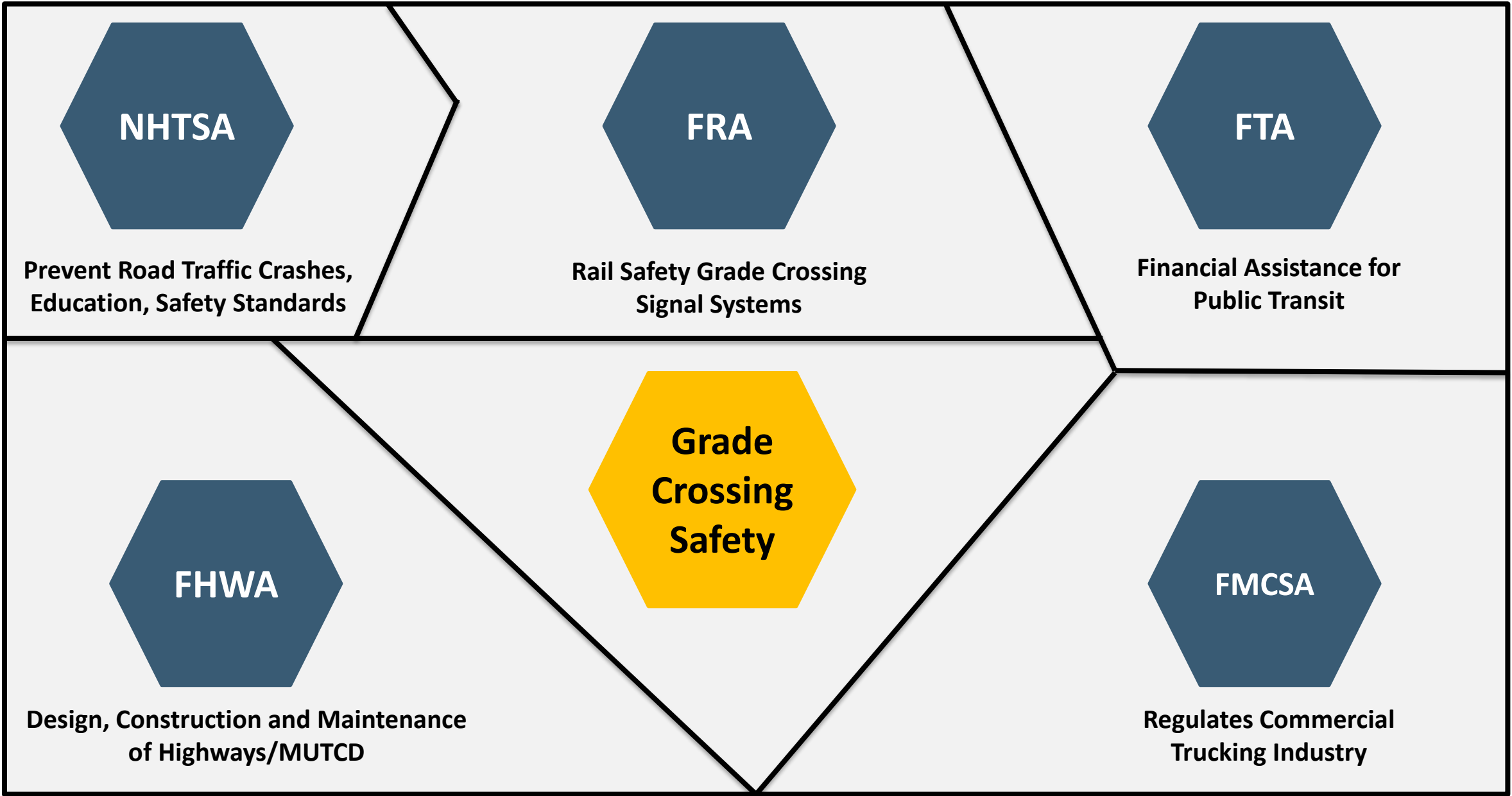
- Background
- Operating Administrations
- Jurisdictions
- The Goal of the Multi-Modal, Safety Action Team (SAT)
- Questions
  - Please hold all questions until Rachel completes her presentation



# Background

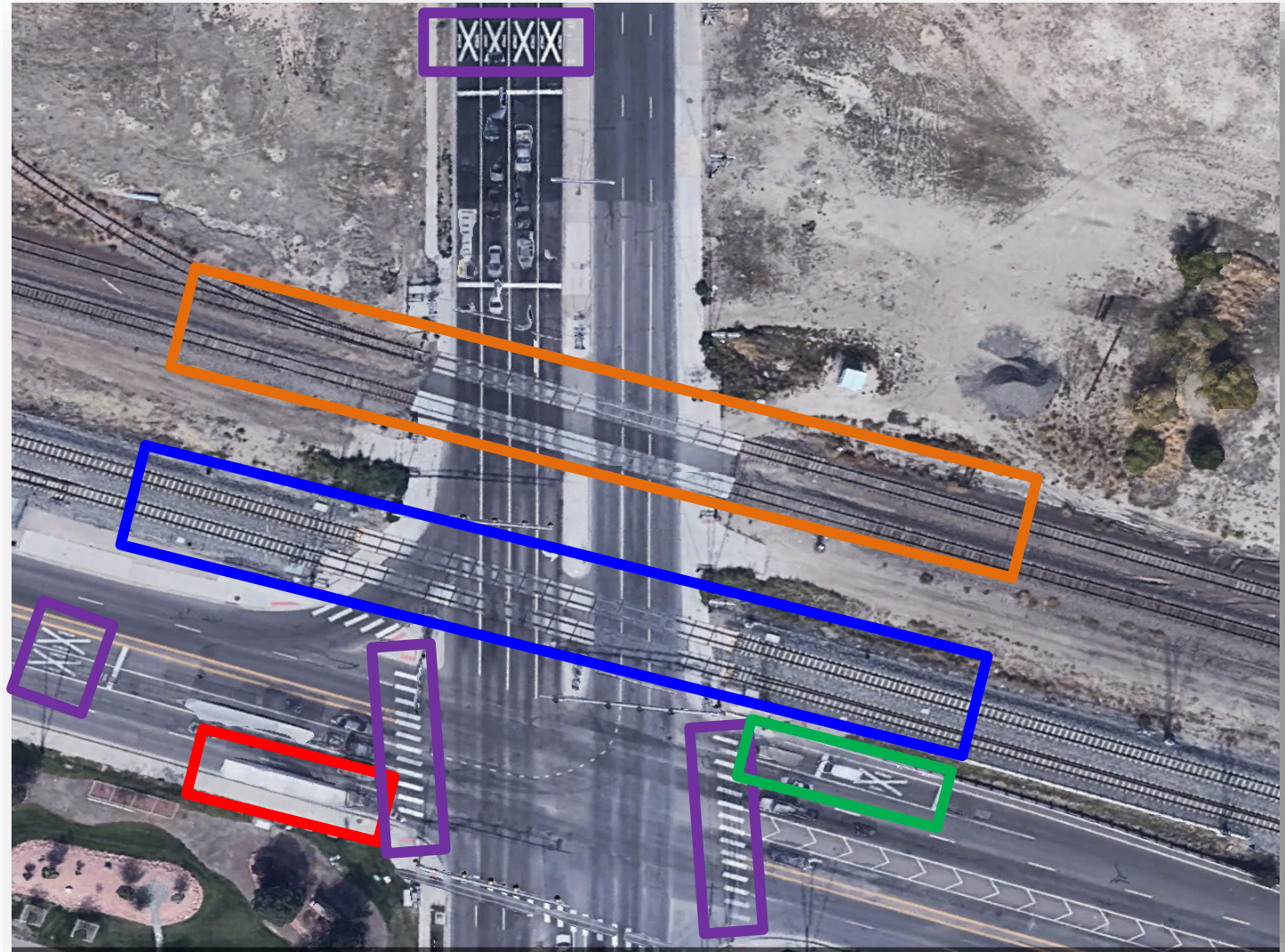
- Rail grade crossing events and fatalities are on the rise
- USDOT-led approach to significantly reduce serious and fatal injuries at highway-rail grade crossing and trespassing
- Unfortunately, rail transit grade crossing events and fatalities are on the rise:
  - Most recently in 2021—based on FTA National Transit Database Data—there were a total of 568 grade crossing collisions that resulted in 18 fatalities and 171 injuries
  - That’s 63 more events and 6 more fatalities compared to 2020
  - To address this persistent safety challenge, the U.S. DOT Executive Safety Council decided to form a Highway-Rail Crossing Safety Action Team (SAT) in March 2022 to support a Department-wide effort comprised of FRA, FTA, FHWA, NHTSA, FMCSA and VOLPE as needed.

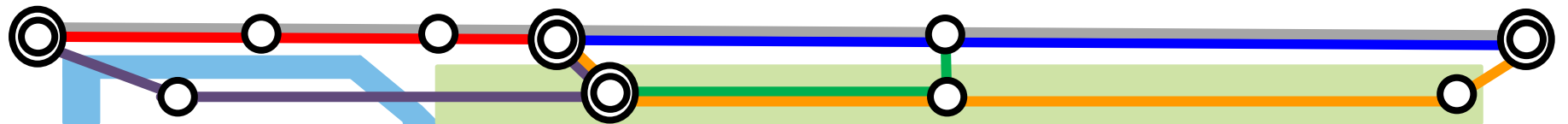




# Each Mode's Independent Authority

- **FRA – Freight Rail**
- **FTA – Light/Commuter Rail**
- **FMCSA – Trucking**
- **FHWA – Markings**
- **NHTSA – Vehicle Safety**



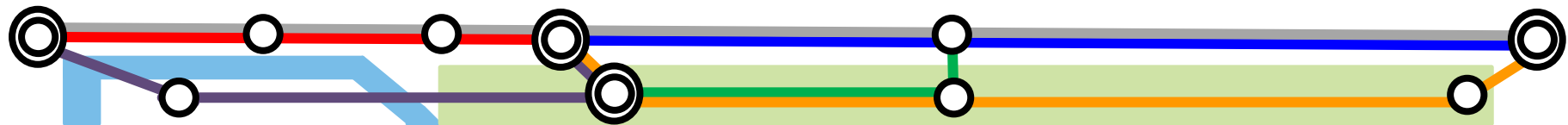
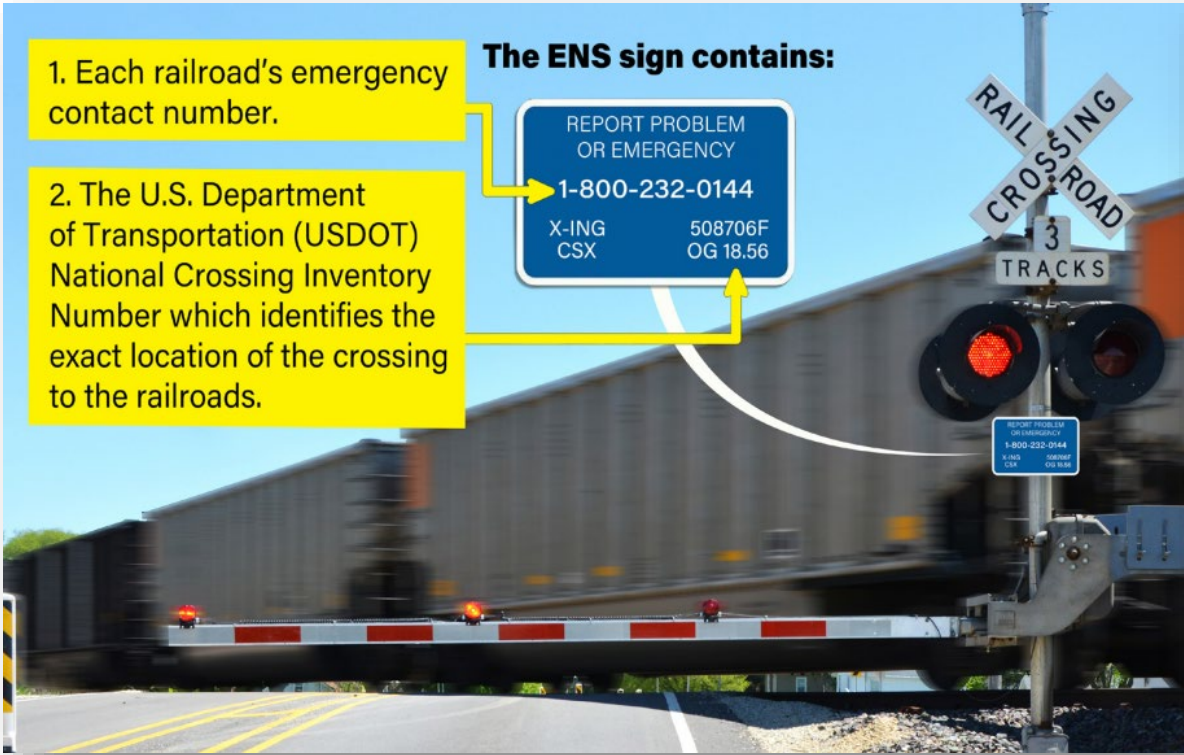


1. Each railroad's emergency contact number.

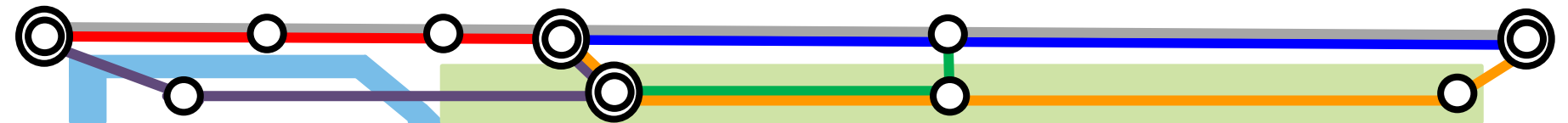
2. The U.S. Department of Transportation (USDOT) National Crossing Inventory Number which identifies the exact location of the crossing to the railroads.

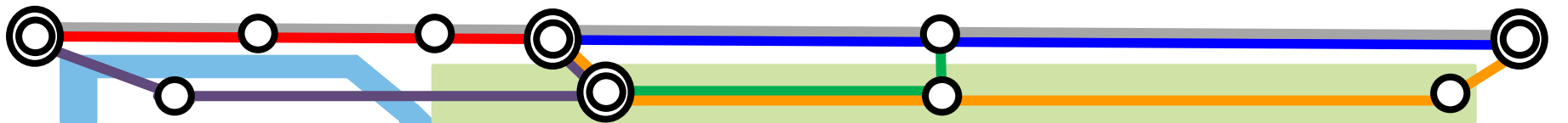
**The ENS sign contains:**

REPORT PROBLEM  
OR EMERGENCY  
1-800-232-0144  
X-ING 508706F  
CSX OG 18.56









# Contact Information

**Elliott Shepherd**

Chief, Program Operations Division  
Office of Transit Safety and Oversight  
Federal Transit Administration

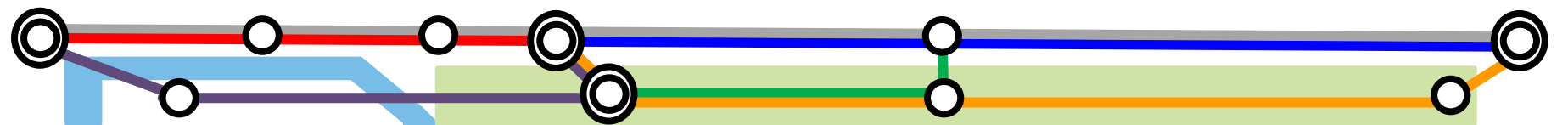
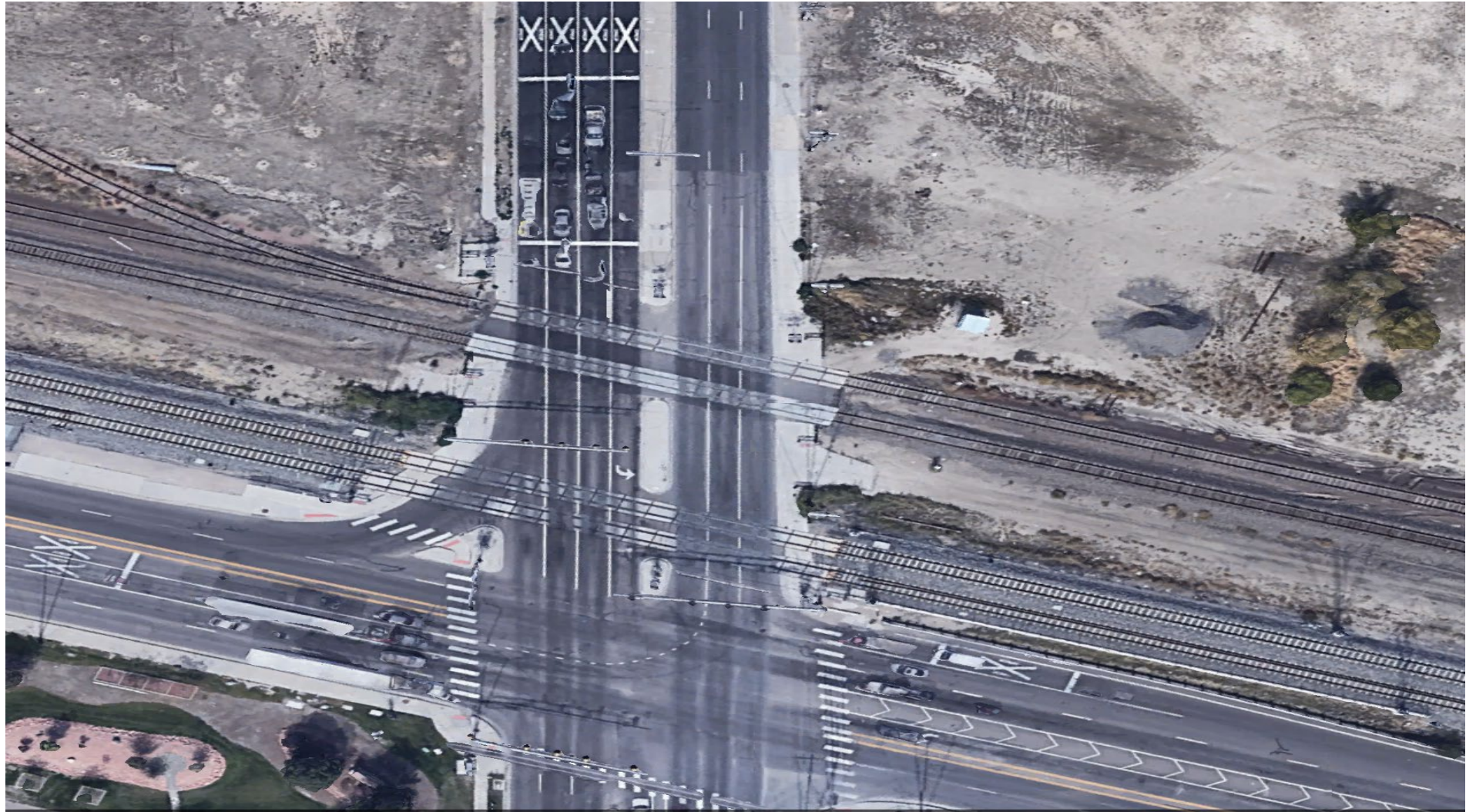
[Elliott.Shepherd@dot.gov](mailto:Elliott.Shepherd@dot.gov)

202-366-7585



# Each Mode's Independent Authority

- **FRA** – Freight Rail
- **FTA** – Light/Commuter Rail
- **FMCSA** – Trucking
- **FHWA** – Markings
- **NHTSA** – Vehicle Safety



# Each Mode's Independent Authority

- **FRA – Freight Rail**
- **FTA – Light/Commuter Rail**
- **FMCSA – Trucking**
- **FHWA – Markings**
- **NHTSA – Vehicle Safety**

