





Planning Information Exchange



2020 Census Implementation in Transportation Planning

Hosted by:

FHWA Office of Planning



FTA Office of Planning and Environment

August 1, 2023



U.S. Department
of Transportation

Federal Highway
Administration

Federal Transit
Administration



2020 Census Implementation

Today's Discussion:

- Introduction

- *Spencer Stevens, FHWA*
- *Fleming El Amin, FTA*

- Implementation Timeline

- *Harlan Miller, FHWA*
- *Corbin Davis, FHWA*

- Resources for Identifying Census Changes

- *Bret Martin, FTA*
- *Supin Yoder, FHWA*
- *Ryan Long, FTA*

- Question & Answer Session



2020 Census Timeline

- **March 24, 2022** Census Bureau published Final Criteria for Urban Areas in the FR
- **Dec. 29, 2022** Census Bureau published listing of urban areas in the FR
- **Jan. 6, 2023** Census Bureau published shapefiles for 2020 urban areas
- **June 5, 2023** FHWA/FTA published a list of TMAs in the FR including new TMAs
- **Aug. 1, 2023** External webinar for stakeholders



2020 Census Timeline

- **Oct. 1, 2023** States should update their PL funds allocation formulas using 2020 Census population data and reflect any new MPOs in the formula
- **Dec. 29, 2023** MPOs must be designated by the Governor(s) and local officials (1 year after UA's published) for new areas over 50,000
- **Dec. 29, 2023** Any UA boundary adjustments should be approved by the State and FHWA Div. Office
- **Dec. 5, 2024** New TMAs must have a Congestion Management Process (18 mos. after FHWA/FTA designate TMAs in the FR)



2020 Census Timeline

- **Dec. 29, 2025** Highway functional classification updates should be completed. April 15th and June 15th HPMS submissions should reflect highway functional classification updates. (date 3 years after UA's published in the FR)
- **Dec. 29, 2026** New MPOs must have an adopted MTP and TIP (date 4 years after UA's published in the FR)
- **June 5, 2027** FHWA/FTA complete planning certification review for each new TMA

2020 Census Resources – Census Bureau



U.S. Department of Transportation
Federal Highway Administration
Federal Transit Administration

- [Federal Register notice from December 29, 2022, for urban areas and final criteria clarifications](#)
- [Frequently asked questions \(FAQs\)](#)
- [Sortable spreadsheets](#)
- [TIGER/Line geographic shapefiles](#)



2020 Census Resources - FHWA

- [Estimated schedule of activities](#)
- [Census FAQs](#)
- [HEPGIS maps and shapefiles](#)
- [Highway functional classification manual](#)
- [Federal Register Notice from June 5, 2023, FHWA and FTA Designation of TMA Areas](#)



2020 Census Resources - FTA

- FTA 2020 Census Landing Page: transit.dot.gov/census
 - [Frequently Asked Questions \(FAQs\)](#) regarding the 2020 Census and its implications for FTA recipients
 - [Crosswalk](#) of changes to Urban Areas \geq 50K in population from 2010 to 2020
 - [Interactive Map](#) of geographic changes to Urban Area boundaries from 2010 to 2020



FTA 2020 Census Crosswalk

- The Crosswalk can be used to identify population-based changes to Urban Areas \geq 50K in population and provides descriptions of geographic changes
- The Crosswalk contains two primary tabs: ‘UZA 2020 Master’ and ‘2010 UZAs Under 50K in 2020’
 - ‘UZA 2020 Master’ → New UZAs and those from 2010 that have retained a population of **at least 50K**
 - ‘2010 UZAs Under 50K in 2020’ → UZAs in 2010 that depopulated to **less than 50K**



FTA 2020 Census Crosswalk

	B	C	D	E	G	H	P	Q	R	S
	2020 Name	State(s)	FTA Region(s)	2020 Population	2010 Name	2010 Population	Comment 1 (Name Changes and New UZAs)	Comment 2 (FTA Threshold Changes)	Comment 3 (Significant Urbanized Area Changes, e.g., splits and mergers)	Comment 4 (Other Notable Changes, e.g., population/naming/boundary changes)
461	Staunton–Waynesboro, VA	VA	3	59,065	Staunton–Waynesboro, VA	56,611				
462	Lake Havasu City, AZ	AZ	9	59,017	Lake Havasu City, AZ	53,427				
463	Twin Falls, ID	ID	10	58,808			New UZA	Crossed 50k Threshold		
464	Gadsden, AL	AL	4	57,975	Gadsden, AL	64,172				
465	Kahului–Wailuku, HI	HI	9	57,905	Kahului, HI	55,934	Name Changed			
466	Maricopa, AZ	AZ	9	57,771			New UZA	Crossed 50k Threshold		
467	Wheeling, WV–OH	WV, OH	3, 5	57,695	Wheeling, WV–OH	81,249				Moundsville no longer in UZA
468	Beckley, WV	WV	3	57,468	Beckley, WV	64,022				
469	Monroe, MI	MI	5	57,260	Monroe, MI	51,240				
470	San Luis Obispo, CA	CA	9	56,904	San Luis Obispo, CA	59,219				
471	Traverse City–Garfield, MI	MI	5	56,890			New UZA	Crossed 50k Threshold		
472	Hanover, PA	PA	3	56,712	Hanover, PA	66,301				Gettysburg-Cumberland no longer in UZA
473	Lake Jackson, TX	TX	6	56,054	Lake Jackson–Angleton, TX	74,830	Name Changed			Angleton no longer in UZA
474	Grants Pass, OR	OR	10	55,724	Grants Pass, OR	50,520				
475	Cape Girardeau, MO–IL	MO, IL	5, 7	55,546	Cape Girardeau, MO–IL	52,900				
476	Williamsport, PA	PA	3	55,344	Williamsport, PA	56,142				
477	Zephyrhills, FL	FL	4	55,133	Zephyrhills, FL	66,609				Dade City no longer in UZA
478	Grand Island, NE	NE	7	55,099	Grand Island, NE	50,440				
479	Lewiston, ID–WA	ID, WA	10	54,798	Lewiston, ID–WA	51,924				
480	Fond du Lac, WI	WI	5	54,731	Fond du Lac, WI	54,901				
481	Goldsboro, NC	NC	4	54,456	Goldsboro, NC	61,054				
482	Bullhead City, AZ–NV	AZ, NV	9	54,396			New UZA	Crossed 50k Threshold		Napa County Airport and Middleton area now in
483	Lompoc, CA	CA	9	54,287	Lompoc, CA	51,509				
484	Sierra Vista, AZ	AZ	9	54,274	Sierra Vista, AZ	52,745				
485	Eagle Pass, TX	TX	6	54,083			New UZA	Crossed 50k Threshold		
486	Wasilla–Knik–Fairview–North	AK	10	53,444			New UZA	Crossed 50k Threshold		
487	Los Lunas, NM	NM	6	53,365	Los Lunas, NM	63,758				
488	Poinciana, FL	FL	4	53,267			New UZA	Crossed 50k Threshold		
489	Hinesville, GA	GA	4	53,107	Hinesville, GA	51,456				
490	Beaufort–Port Royal, SC	SC	4	52,515			New UZA	Crossed 50k Threshold		
491	Helena, MT	MT	8	52,380			New UZA	Crossed 50k Threshold		
492	Cartersville, GA	GA	4	52,351	Cartersville, GA	52,477				
493	Midland, MI	MI	5	52,340	Midland, MI	59,014				Freeland no longer in UZA
494	Guayama, PR	PR	4	52,290	Guayama, PR	80,155				Coqui-Jobos no longer in UZA
495	Clayton, NC	NC	4	51,898			New UZA		Portion transferred from Raleigh, NC UZA	
496	Valparaiso–Shorewood Forest	IN	5	51,867			New UZA	Crossed 50k population threshold	Split from Chicago, IL–IN UZA (16264)	
497	Watertown, NY	NY	2	51,832	Watertown, NY	57,840				Carthage no longer in UZA
498	Farmington, NM	NM	6	51,763	Farmington, NM	53,049				
499	Pascagoula–Gautier, MS	MS	4	51,454	Pascagoula, MS	50,428	Name Changed			Gautier now included in UZA

- UZA 2020 Master' → Changes from 2010 to 2020 described in columns P, Q, R, and S
- '2010 UZAs Under 50K in 2020' → Changes from 2010 to 2020 described in columns G, H, & I



Types of Changes Described in Crosswalk

- Name changes
- FTA-relevant population threshold changes (e.g., crossed 200K in population)
- UZA splits, mergers, and transfers
- New areas included in UZAs that expanded in geographic extent
- Areas previously included in 2010 UZAs that are no longer in 2020 UZAs

FTA 2020 Census Interactive Map

The [Interactive Map](#) can be used to identify geography-based Census changes



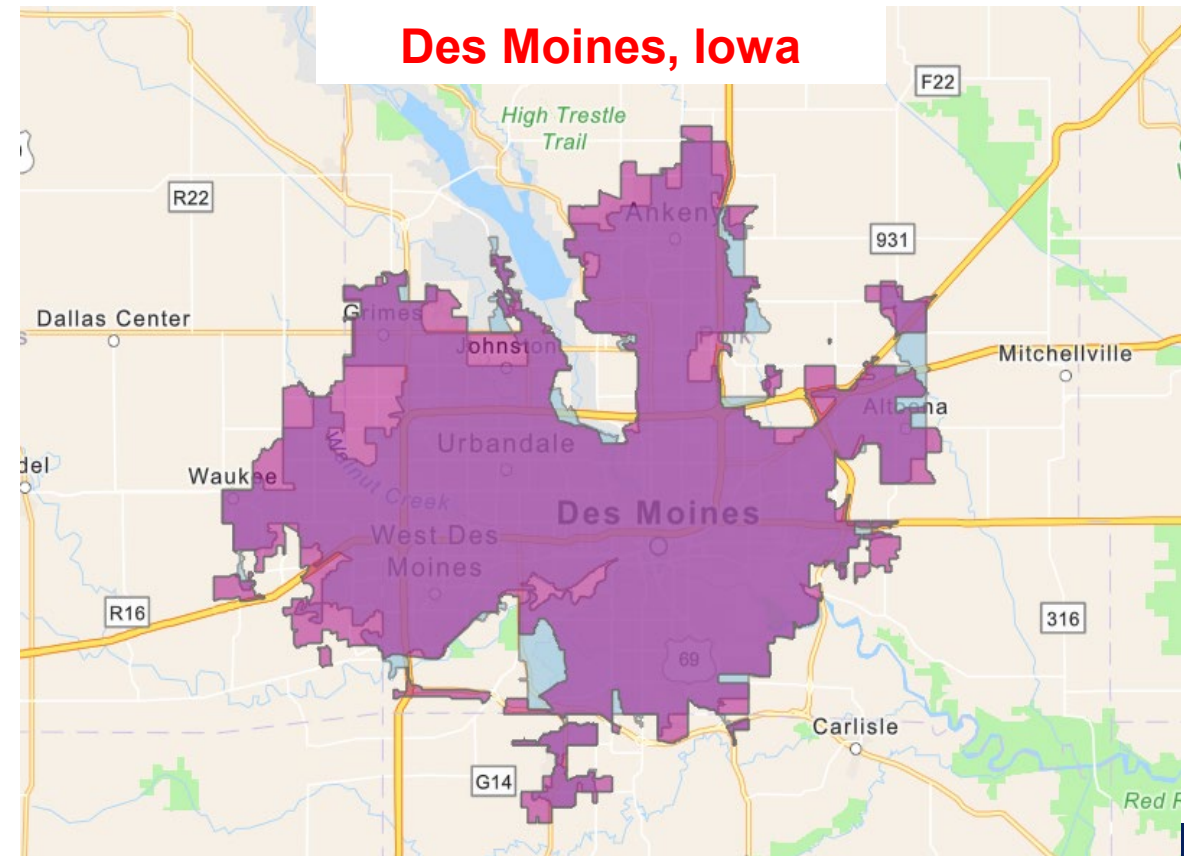
U.S. Department of Transportation
Federal Highway Administration
Federal Transit Administration

The screenshot shows the 'FTA Census Map' interface. On the left, a 'Layers' panel is visible, containing a list of map layers: 2020 UZAs, 2020 Non-UZA Urban Clusters, 2010 UZAs, 2010 Non-UZA Urban Clusters, NTD Reporters, NTM Stops, NTM Routes, NBTA Stops, and NBT. A red box highlights this panel. A red text box with the text 'Select From an Assortment of Map Layers' is overlaid on the map. The map itself shows the United States with various cities labeled, including Vancouver, Seattle, San Francisco, Los Angeles, Dallas, Houston, Monterrey, Mexico City, Chicago, Detroit, St. Louis, Atlanta, Miami, Havana, Port-au-Prince, Toronto, Montreal, and Boston. The map is powered by Esri. At the bottom of the map, it says 'Esri, Garmin, FAO, NOAA, USGS, EPA' and 'Powered by Esri'.



Interactive Map – Change Example

- Can adjust layer symbology to visualize changes
- Dark Pink = UZA territory in both Census years
- Light Pink = 2020 UZA only (Rural → UZA)
- Light Blue = 2010 UZA only (UZA → Rural)



New FHWA HEPGIS Maps



U.S. Department of Transportation
Federal Highway Administration
Federal Transit Administration

U.S. Department of Transportation
Federal Highway Administration

Planning, Environment, Realty (HEP)
HEPGIS
Help | About | Sources | Contact

Alternative Fuel Corridors | Highway System | Fatal Crashes | **2020 Census & Equity Analysis** | MPO & Air Quality | Border Flows / FAF4

Find Map | Find Location | Points Of Interest Map | Print Map | Print Table | Download Table | Email Page | **Access** | MPO And 2010 Census Urban Areas | New

MPO And 2010 Census Urban Area
2020 TMA And MPO Boundaries
2010 TMA And MPO Boundaries
2010 FHWA Adjusted Urban Area
Air Quality Maps
Megaregion Research

Map Scale: 1 : 15,066,482 Width: 4,520 Miles

©2012 CALIPER

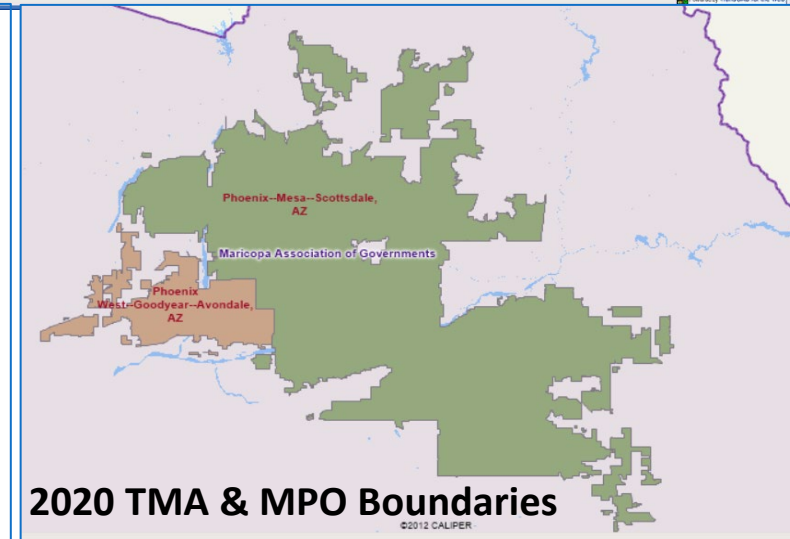
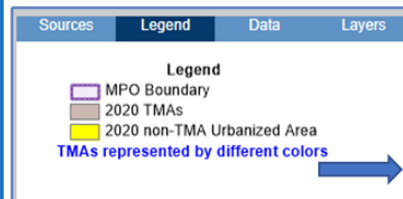
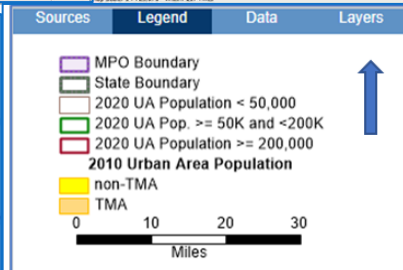
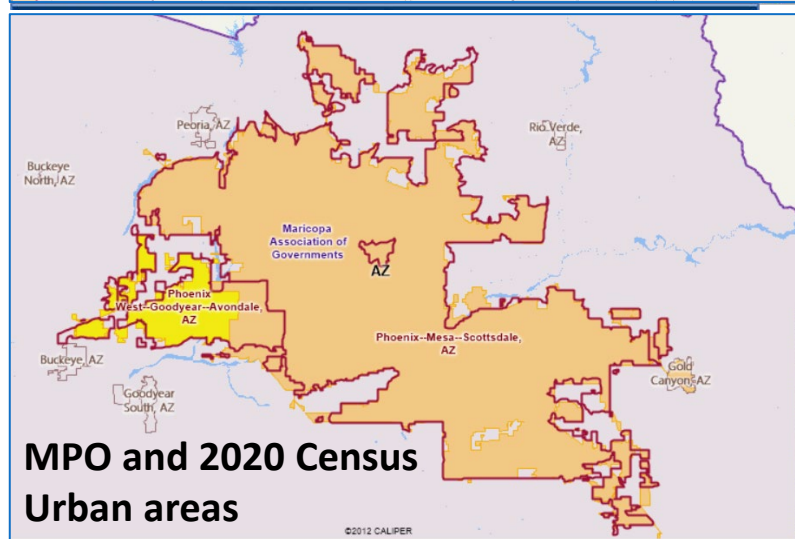
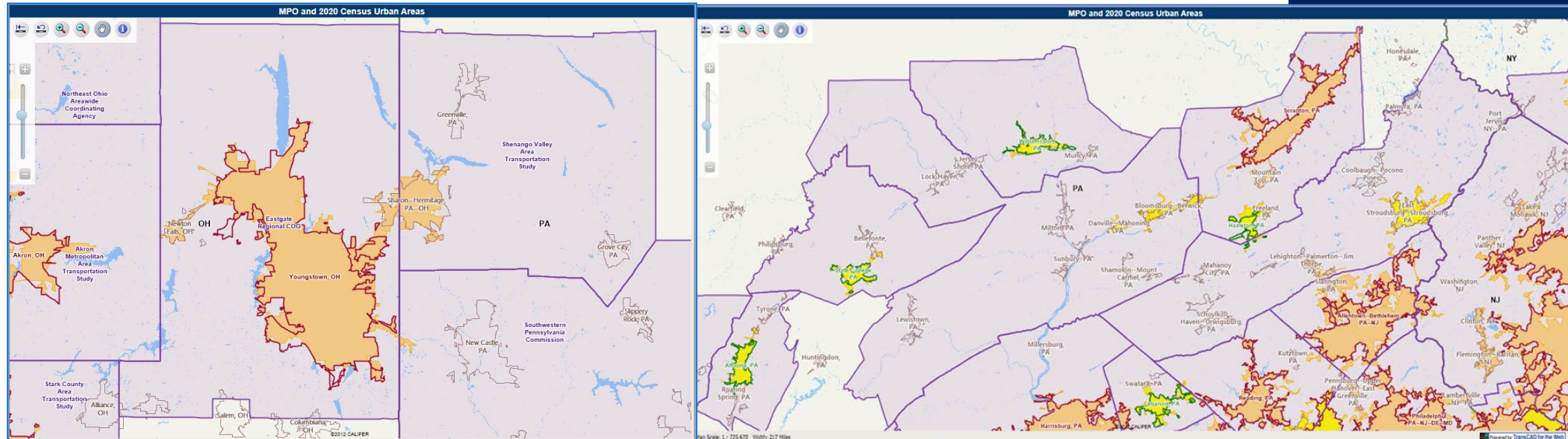
Powered by TransCAD for the Web

For information and comments about this web site, contact Supin Yoder

New FHWA HEPGIS Maps



U.S. Department of Transportation
Federal Highway Administration
Federal Transit Administration





2020 Census Highlight

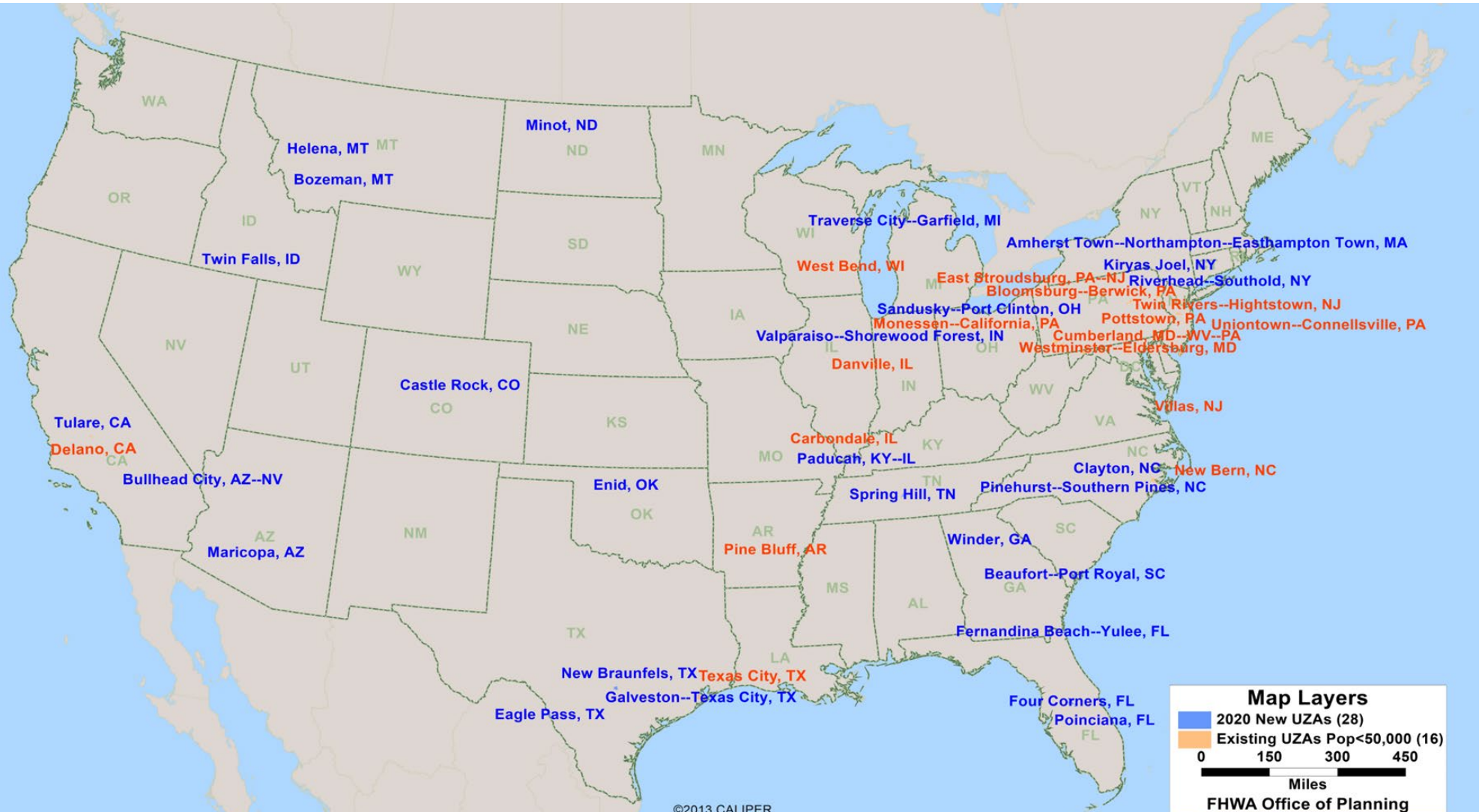
2020 vs. 2010

- Total UAs over 50,000: 510 vs. 498
- Total UAs over 200,000: 192 vs. 179
- 16 Existing UAs fell below 50,000
- 28 New UAs over 50,000
- 15 Additional UAs over 200,000
- 2 UAs fell below 200,000

Impact on Urbanized Areas



U.S. Department of Transportation
 Federal Highway Administration
 Federal Transit Administration



Impact on TMAs



U.S. Department of Transportation
Federal Highway Administration
Federal Transit Administration



Additional MPO Resources



U.S. Department of Transportation
Federal Highway Administration
Federal Transit Administration

TMA Planning Certification Review Primer

www.planning.dot.gov/Documents/Primer/intro_primer.aspx

Census and MPO/TMA Designation

www.fhwa.dot.gov/planning/census_issues/urbanized_areas_and_mpo_tma/resources/

2020 Census Implementation



U.S. Department of Transportation
Federal Highway Administration
Federal Transit Administration

Contacts For Technical Assistance Requests:

FHWA Division Office Contacts

<https://highways.dot.gov/about/field-offices>

FTA Region Office Contacts

<https://www.transit.dot.gov/about/regional-offices/regional-offices>



U.S. Department of Transportation
Federal Highway Administration
Federal Transit Administration

2020 Census Implementation

Questions?