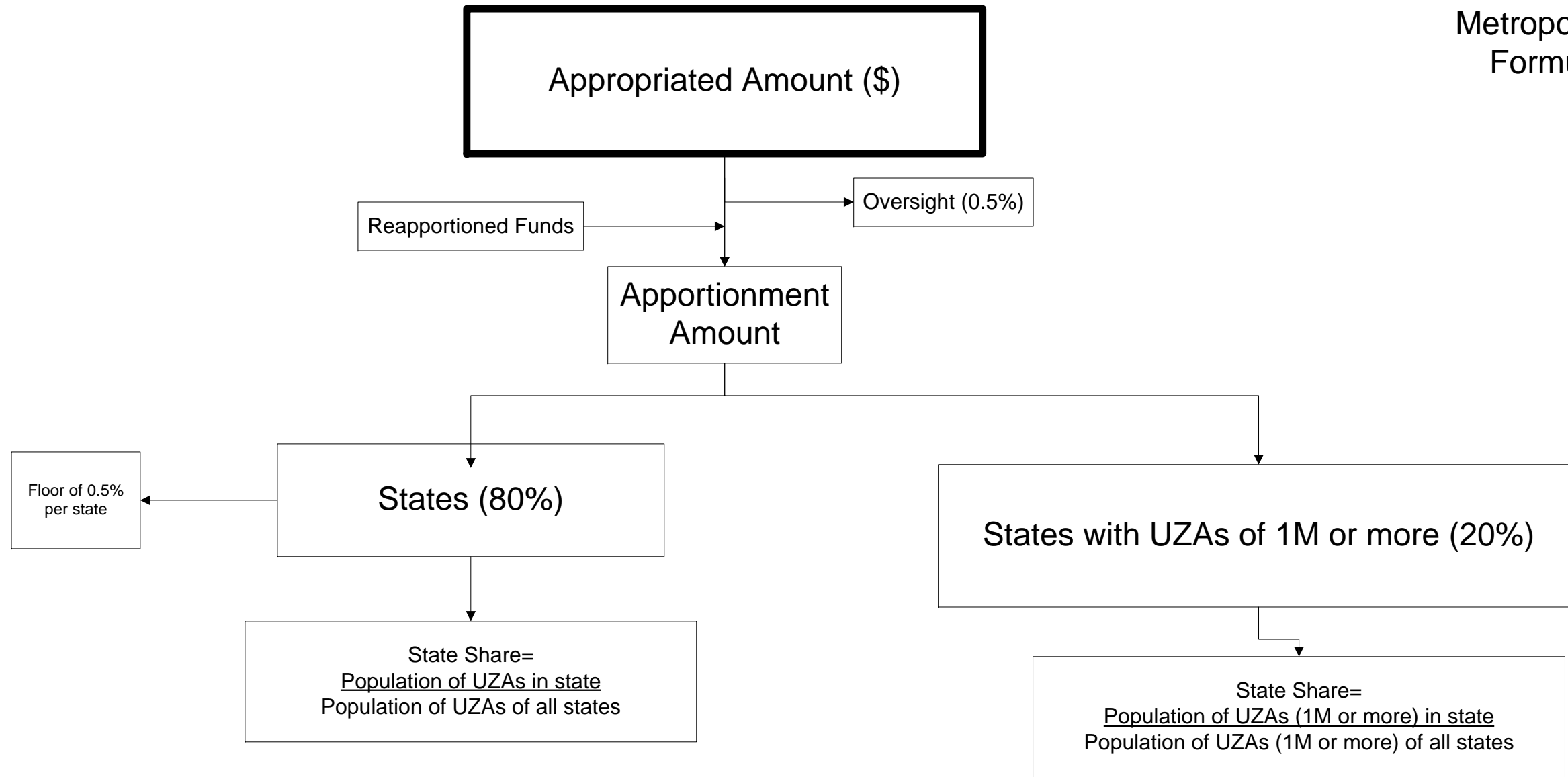
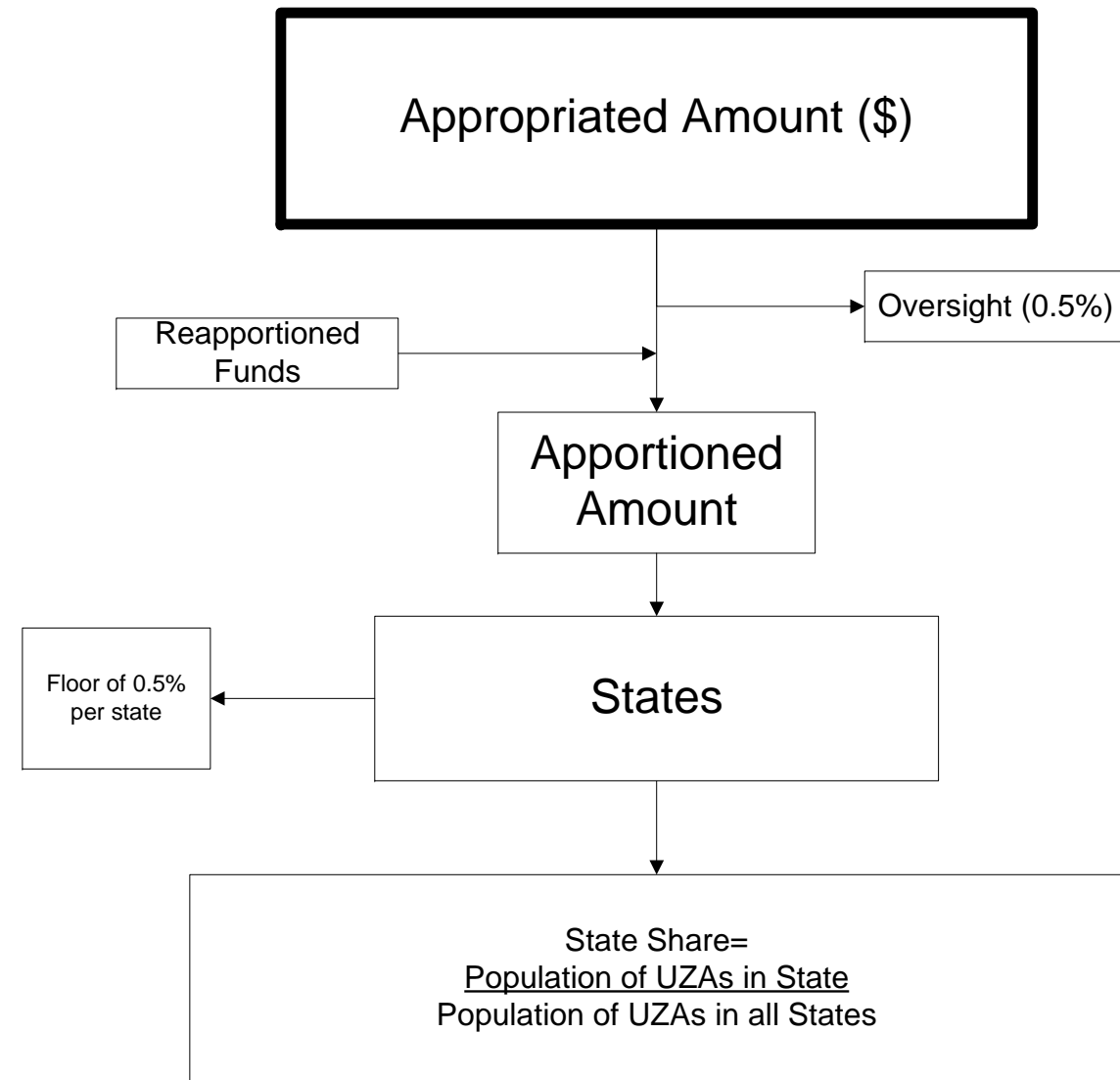


Metropolitan Planning Formula Process

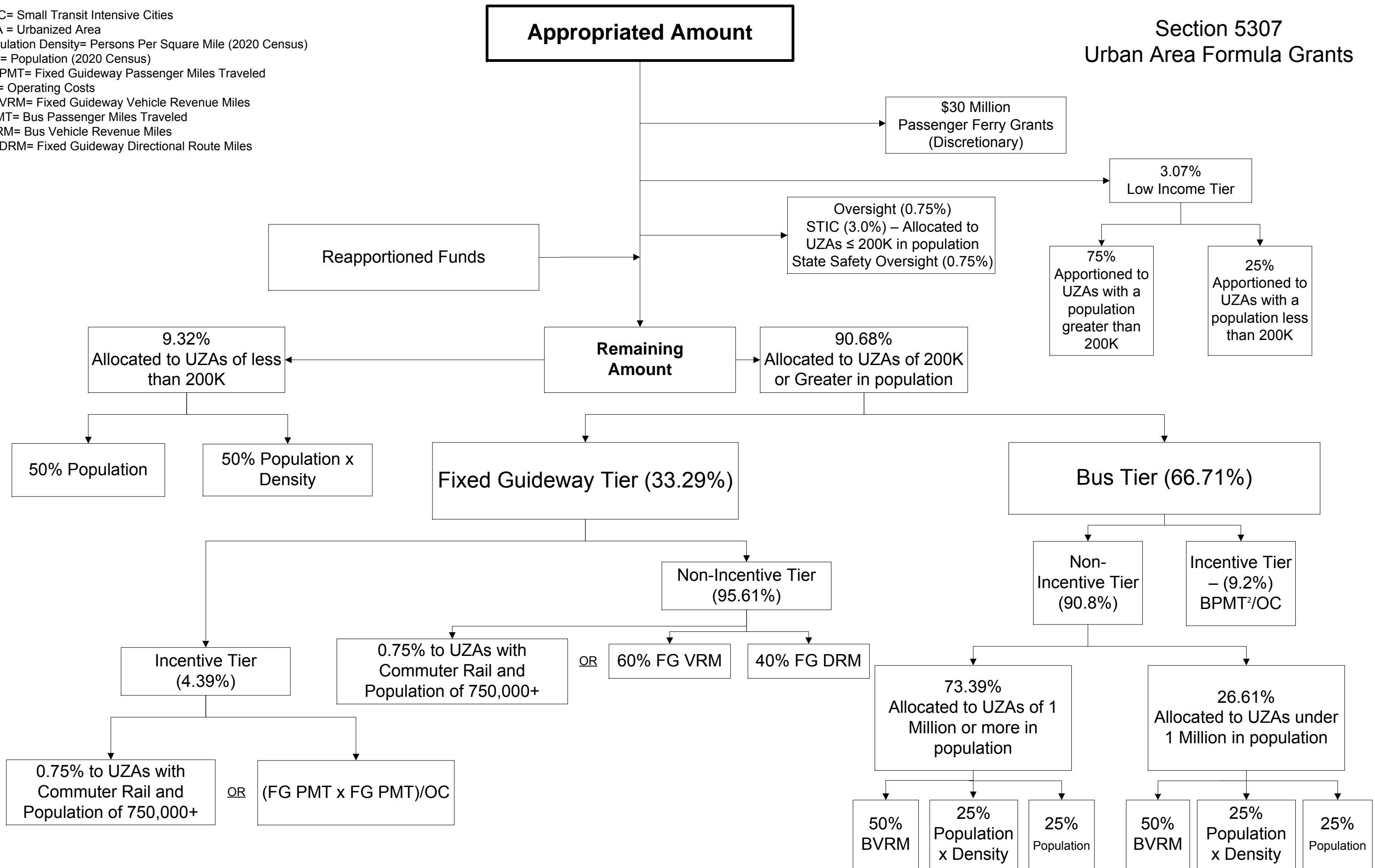


Statewide Planning Formula
Process



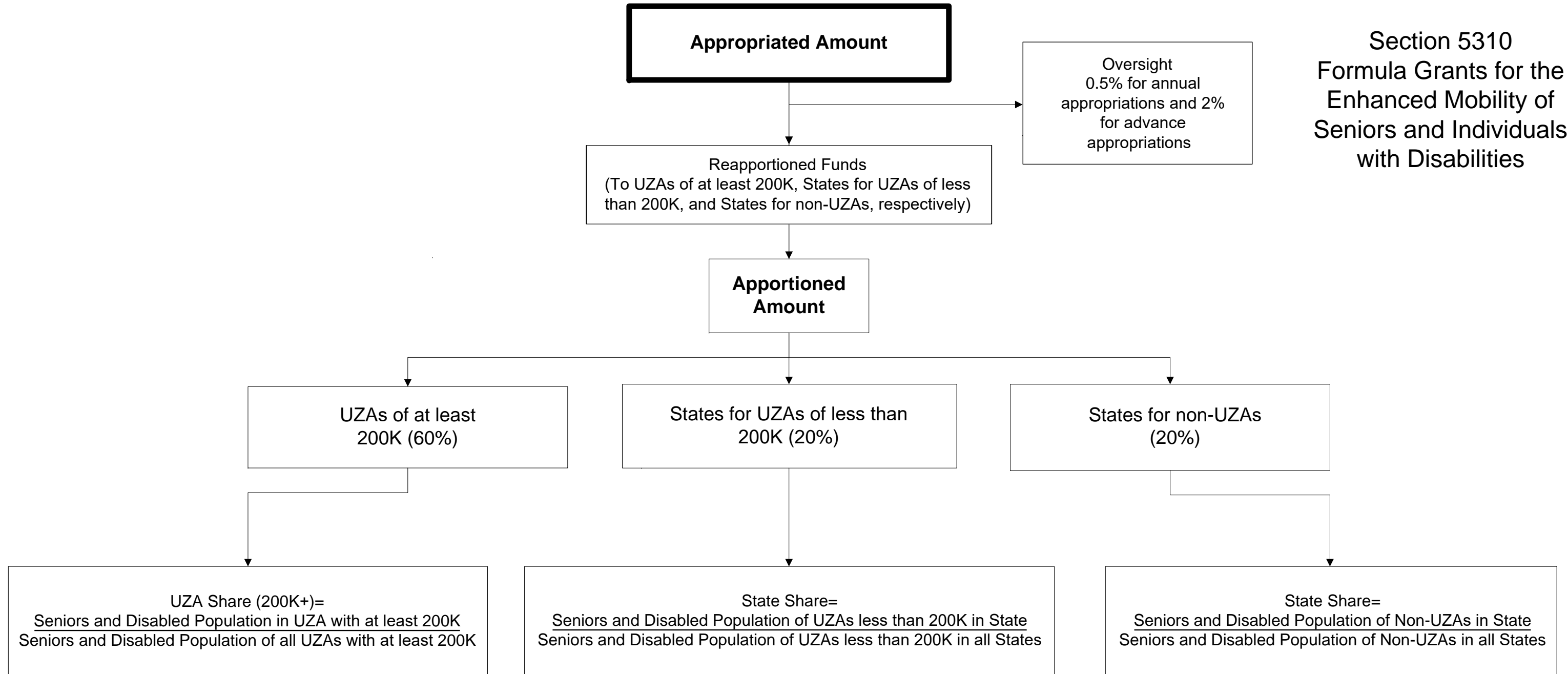
STIC= Small Transit Intensive Cities
 UZA = Urbanized Area
 Population Density= Persons Per Square Mile (2020 Census)
 Pop= Population (2020 Census)
 FG PMT= Fixed Guideway Passenger Miles Traveled
 OC= Operating Costs
 FG VRM= Fixed Guideway Vehicle Revenue Miles
 BPMT= Bus Passenger Miles Traveled
 BVRM= Bus Vehicle Revenue Miles
 FG DRM= Fixed Guideway Directional Route Miles

Section 5307 Urban Area Formula Grants



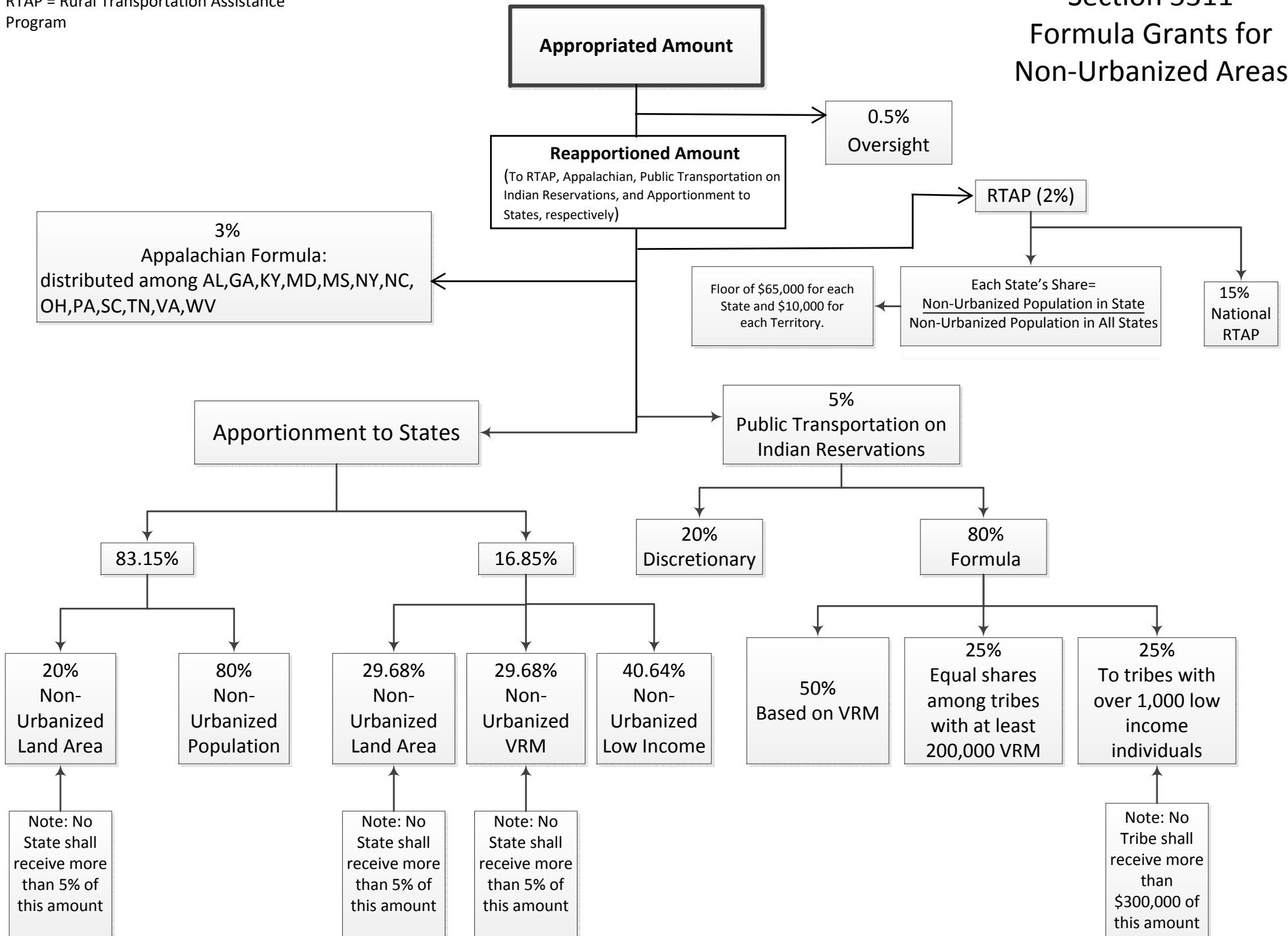
UZA = Urbanized Areas
Non-UZA = Portions of State outside of Urbanized Areas

Section 5310 Formula Grants for the Enhanced Mobility of Seniors and Individuals with Disabilities



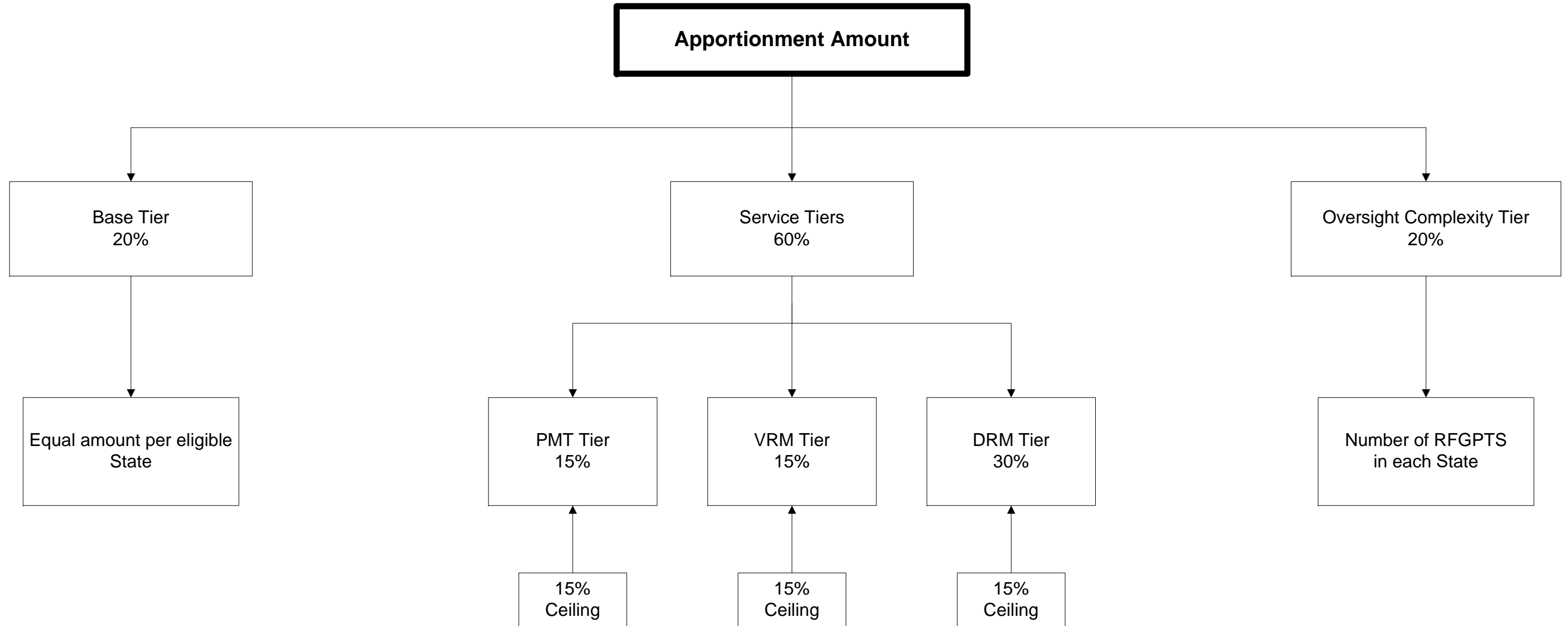
VRM = Vehicle Revenue Miles
 RTAP = Rural Transportation Assistance
 Program

Section 5311 Formula Grants for Non-Urbanized Areas



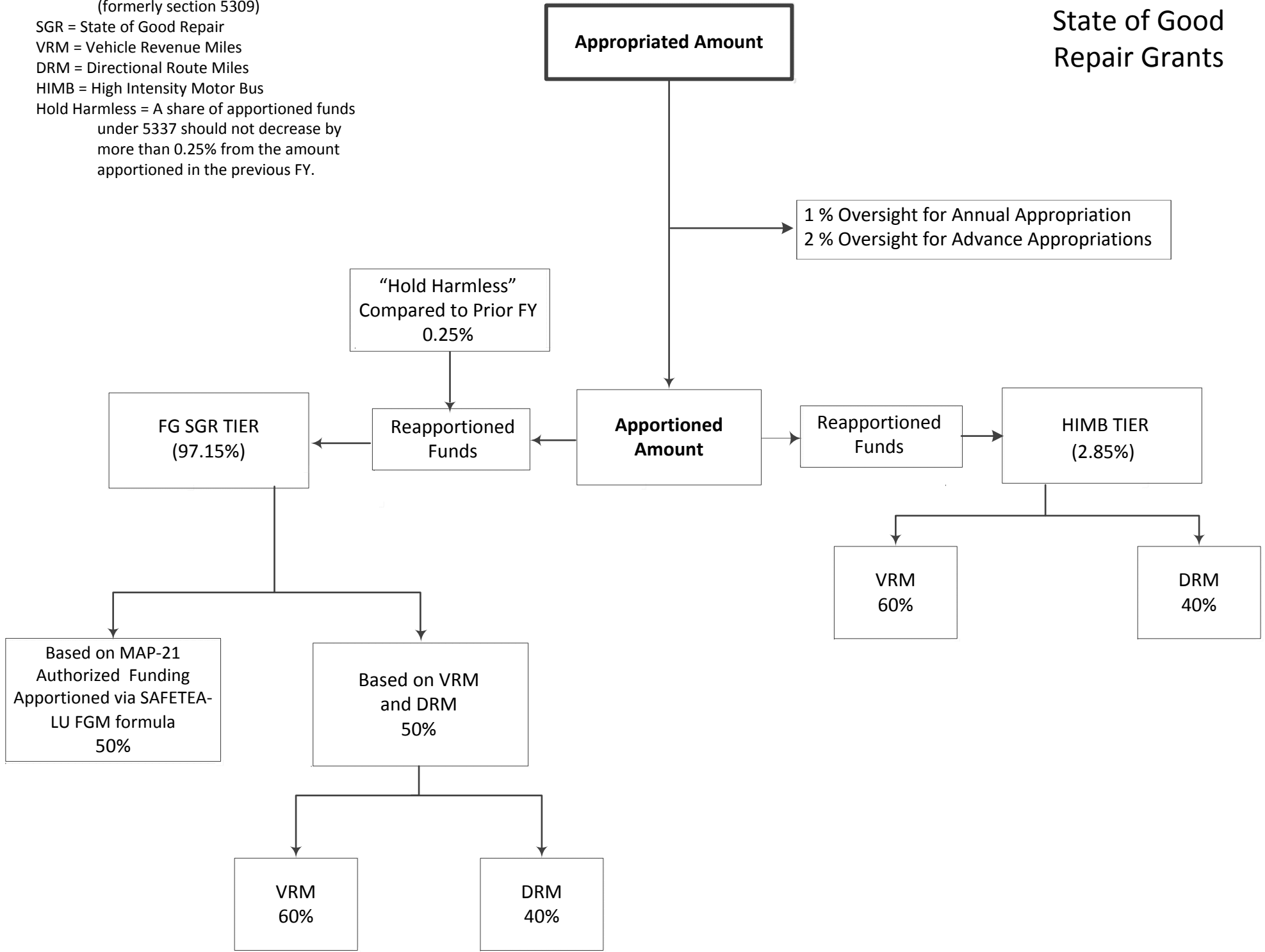
PMT = Vehicle Passenger Miles
VRM = Vehicle Revenue Miles
DRM = Directional Route Miles
RFGPTS = Rail Fixed Guideway
Public Transportation System

Section 5329 Illustrative State Safety Oversight Formula



FG = Fixed Guideway
 FGM = Fixed Guideway Modernization
 (formerly section 5309)
 SGR = State of Good Repair
 VRM = Vehicle Revenue Miles
 DRM = Directional Route Miles
 HIMB = High Intensity Motor Bus
 Hold Harmless = A share of apportioned funds
 under 5337 should not decrease by
 more than 0.25% from the amount
 apportioned in the previous FY.

Section 5337 State of Good Repair Grants



Population Density= Persons Per Square Mile (2020 Census)

OC = Operating Costs

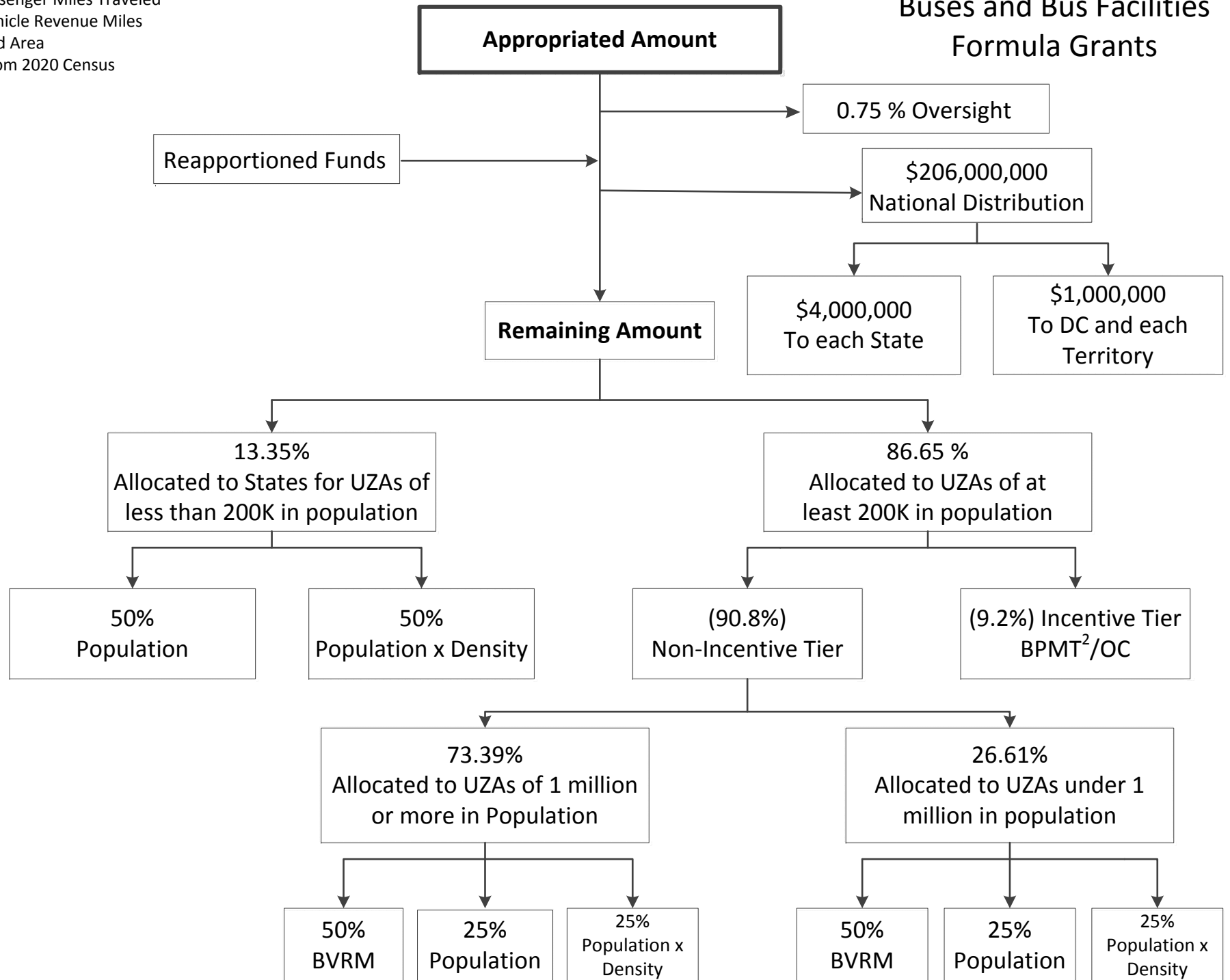
BPMT = Bus Passenger Miles Traveled

BVRM = Bus Vehicle Revenue Miles

UZA = Urbanized Area

Population is from 2020 Census

Section 5339 Buses and Bus Facilities Formula Grants



Section 5340 Formula

Authorized Funding Levels

Growing States Funding Levels
 FY 2022 - \$392,752,680
 FY 2023 - \$400,957,697
 FY 2024 - \$411,427,180
 FY 2025 - \$419,926,283
 FY 2026 - \$430,601,628

High Density Funding Levels
 FY 2022 - \$348,290,112
 FY 2023 - \$355,566,259
 FY 2024 - \$364,850,518
 FY 2025 - \$372,387,459
 FY 2026 - \$381,854,274

ppsm = Persons Per Square Mile

Appropriated Amount (\$)

Growing States

High-Density States
 (8) States > 370 ppsm

State Allocation = $\frac{[\text{Total State Population} - (\text{State Land Area} \times 370 \text{ ppsm} \times \text{State UZA Population} / \text{Total State Population})]}{\text{Sum of Numerator for all 8 States} \times \text{Current Year Funding}}$

2035 Projection = $2020 \text{ State Population} + [(\text{Most recent State Population Estimate from Census} - 2020 \text{ State Population}) / \# \text{ years between most recent estimate and 2020 State Population}] \times 15$

State Share = $\frac{\text{State Population 2035}}{\text{All States Population 2035}}$

- CT
- DE
- FL
- MD
- MA
- NJ
- NY
- RI

Urbanized Portion of each State's Share = % of State's Population residing in UZAs

Non-Urbanized Portion of each State's Share = % of State Population residing in non-UZAs

Individual UZA Share = $\frac{\text{Population in UZA}}{\text{Population of all UZAs in the state}}$

Individual UZA Share = $\frac{\text{UZA Population}}{\text{Population of all UZAs in the State}}$

Added to 5311 Apportionment

Added to 5307 Apportionment

5307 Apportionment

Small Transit
Intensive Cities
(STIC) Formula

