

FTA Update

**Elliott Shepherd, Chief, Program Operations Division, Office
of Transit Safety and Oversight**

Operation Lifesaver National Advisory Council

3/12/2024



U.S. Department of Transportation
Federal Transit Administration

Agenda

- Partnership with Operation Lifesaver, Inc. (OLI)
- FTA's Key Safety Focus Areas
- Rail Transit Safety Data
- FTA Response to Safety Data Trends



FTA's Partnerships with OLI

Operation Lifesaver, Inc.



- FTA has supported OLI through an ongoing cooperative agreement for the past 20+ years
- OLI develops resources, conducts outreach and runs a competitive grant program for transit agencies to get important safety messages out to the public



See Tracks? Think Train!® Week

- Annual observance event in mid-September
- FTA provides funding for transit outreach initiatives and leadership videos
- FTA promotes safety messages to transit industry partners

Key Safety Focus Areas



**Transit Worker and
Customer Safety**



**Fatigue Management
and Hours of Service**



**Rail Collisions and
Rail Grade Crossing
Issues**



Roadway Worker Protection



Bus-to-Person Collisions

Office of Transit Safety and Oversight Priorities

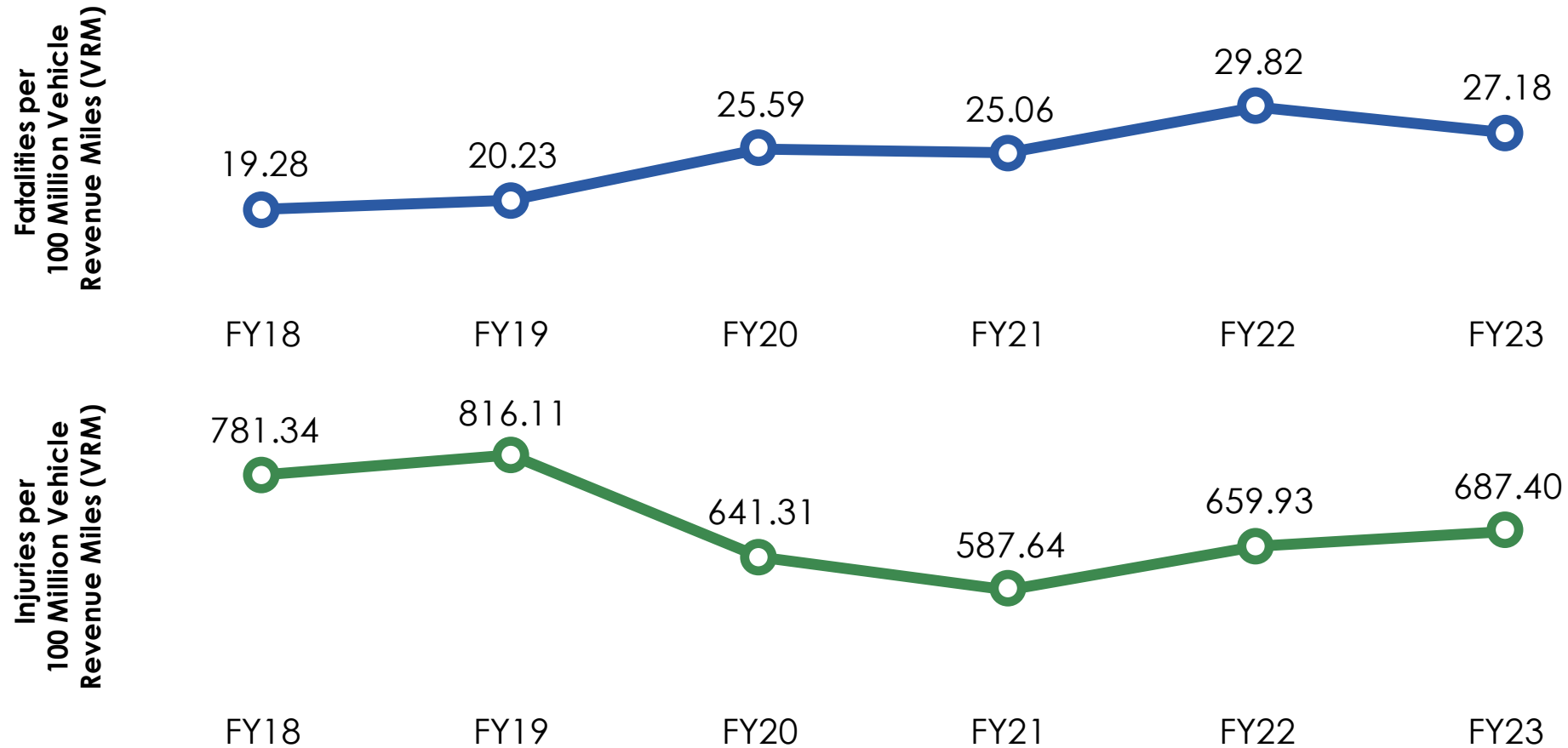
Reduce assaults on workers and riders

Publish Public Transportation Agency Safety Plans regulation and National Safety Plan

Use data to inform safety and oversight decision-making



State of Rail Transit Safety – Annual Trends



• **Source:** National Transit Database (NTD)

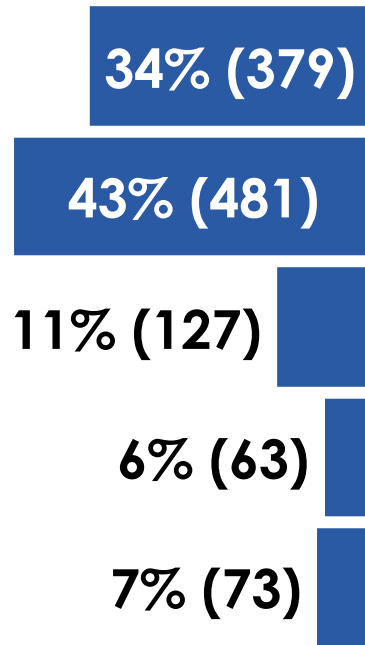
Data as of: Feb 1, 2024

FY 2022–23 data are preliminary.

Sources of Rail Transit Fatalities and Injuries

Rail Transit Fatalities and Injuries by Source, Oct 2017–Aug 2023

Fatalities



Suicides and Suicide Attempts

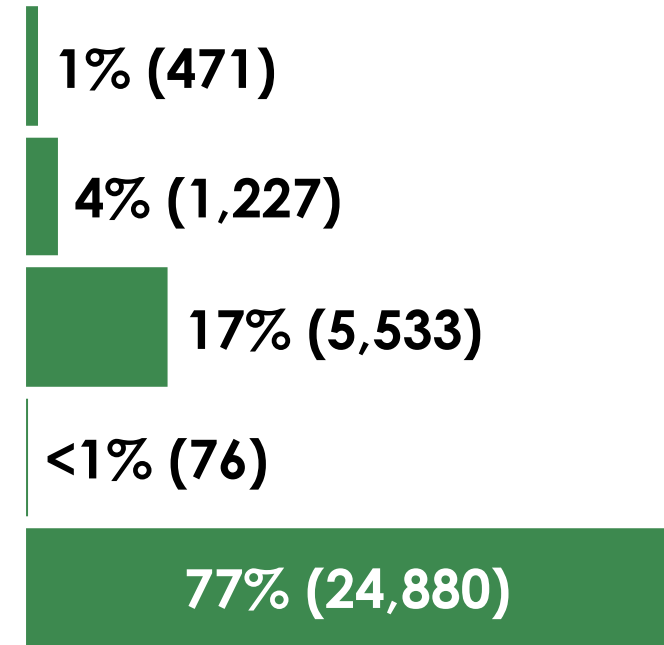
Collisions between Rail Vehicles and People

Homicides and Assaults

Personal Injuries on the Right-of-Way

All Others (e.g. personal injuries in rail stations)

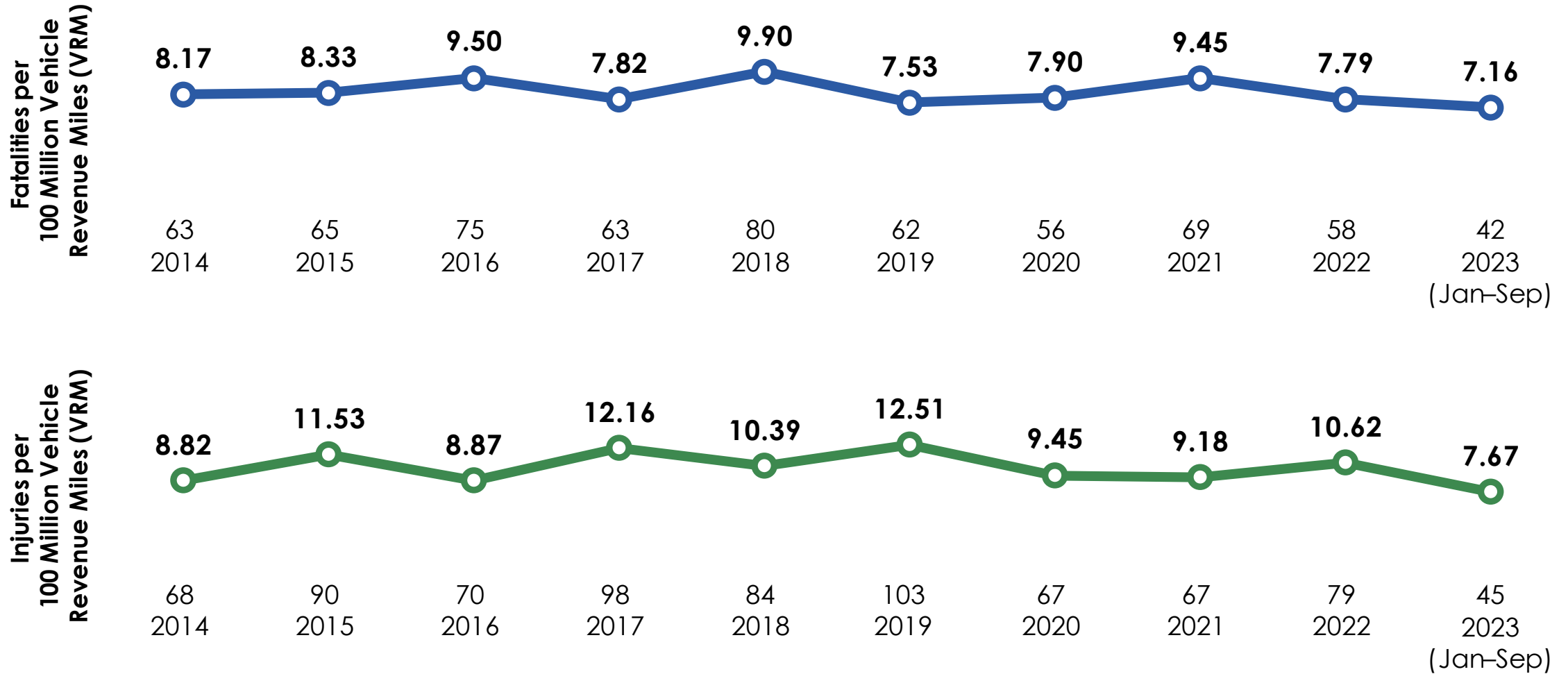
Injuries



Source: National Transit Database (NTD)
 FY 2022–23 data is preliminary.

Data as of: Feb 1, 2024

Rail Transit Suicide Event Fatalities and Injuries, Jan 2014–Sep 2023



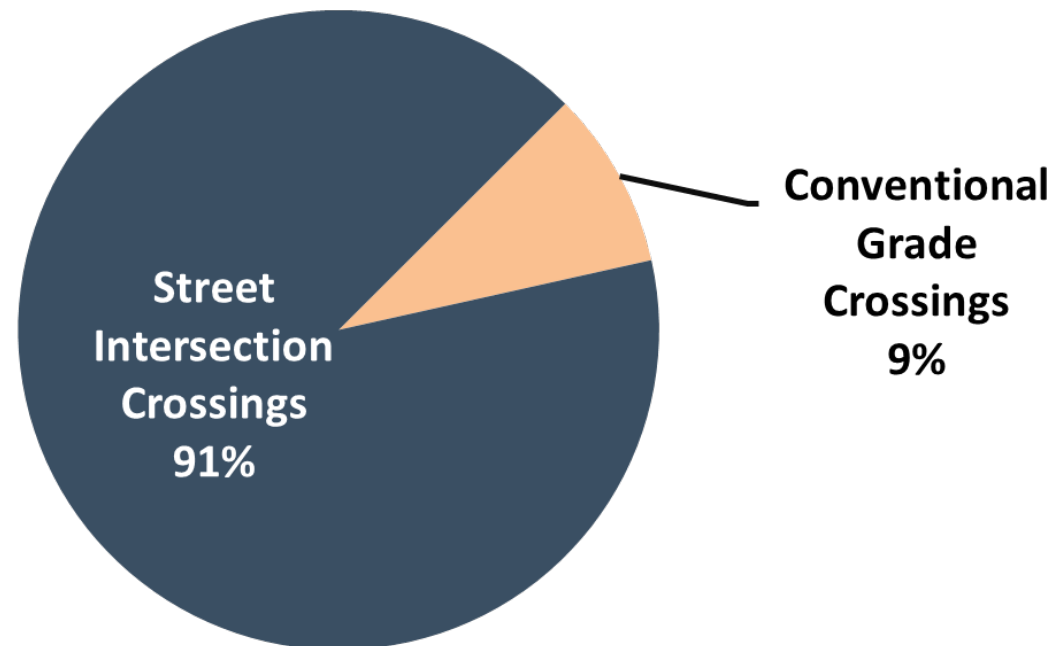
Source: National Transit Database (NTD). 2022–23 data are preliminary.

Data as of: Jan 2, 2024

Rail Grade Crossing (RGX) Incidents by Crossing Type

Incidents reported were nearly *10 times higher* at street intersection crossings than conventional grade crossings during a recent FTA survey.

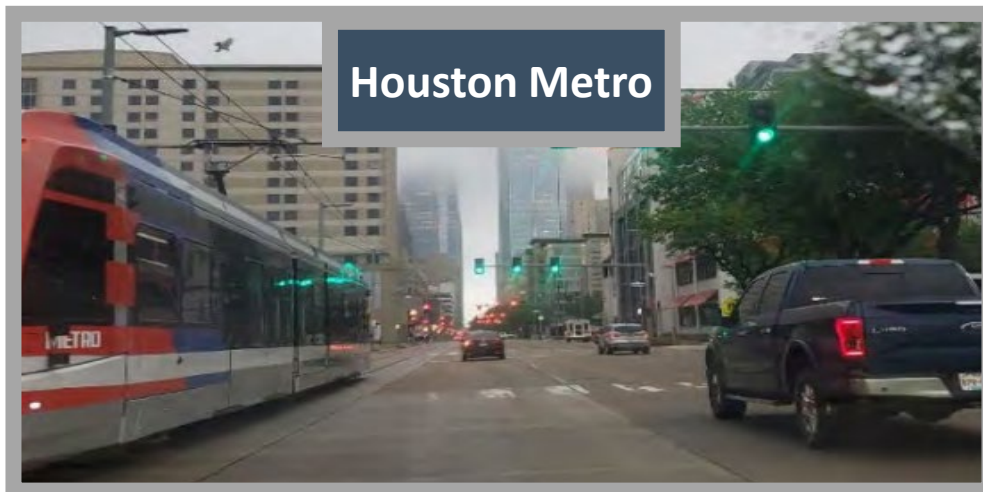
Percentage of Incidents Reported at Conventional Grade Crossings vs. Street Intersection Crossings



Source: [FTA Standards Development Program: Rail Transit Roadway/Pedestrian Grade Crossing Exploratory Report](#) | May 2022

Street Intersection RGX

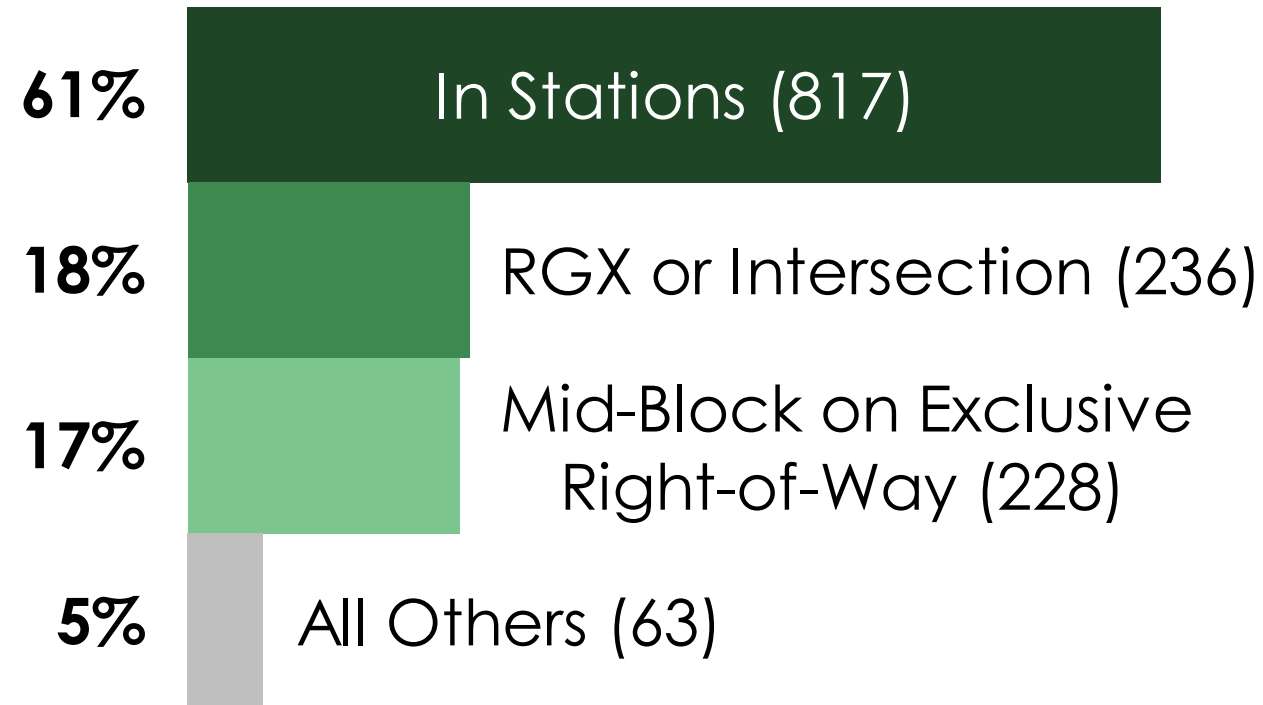
People and privately-owned-vehicles encounter trains in travel lanes at urban street intersections



Rail-to-Person Collisions, FY 2019-2022

Most rail-to-person collisions occur in stations.

Collisions By Location



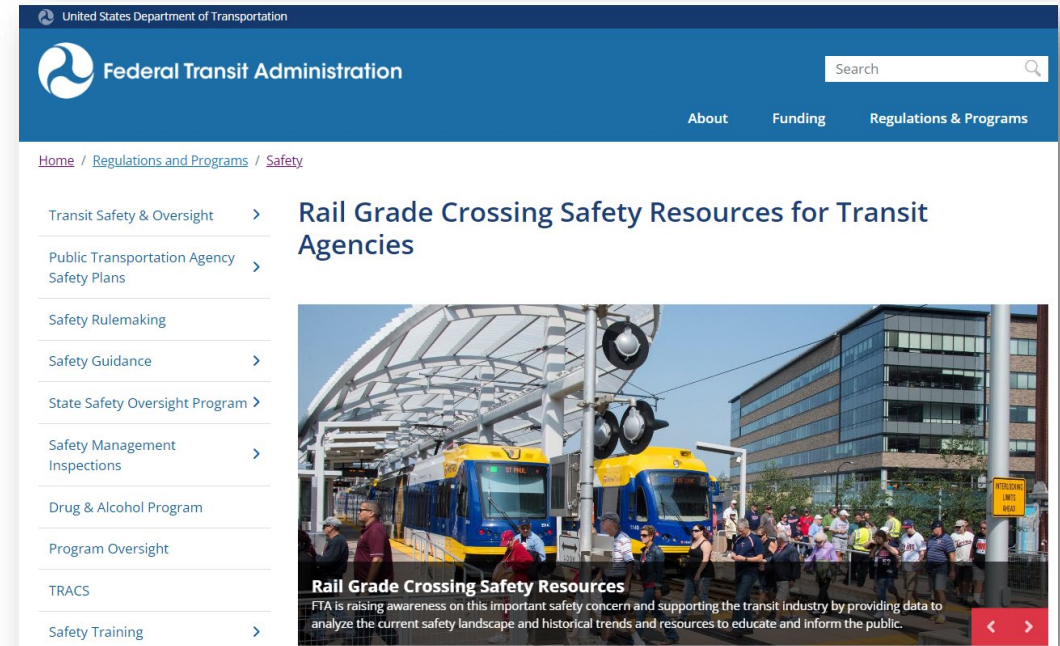
RGX Resources

RGX website

- OLI Transit Materials
- Transit Safety Pledges
- FTA presentations
- TRACS Reports
- FTA Research

RGX webinar

- Spotlight on Safety: Transit Rail Grade Crossings
- Featured guest speakers from the Center for Urban Transportation Research, MxV Rail, TriMet and Operation Lifesaver, Inc.



Website



Presentation

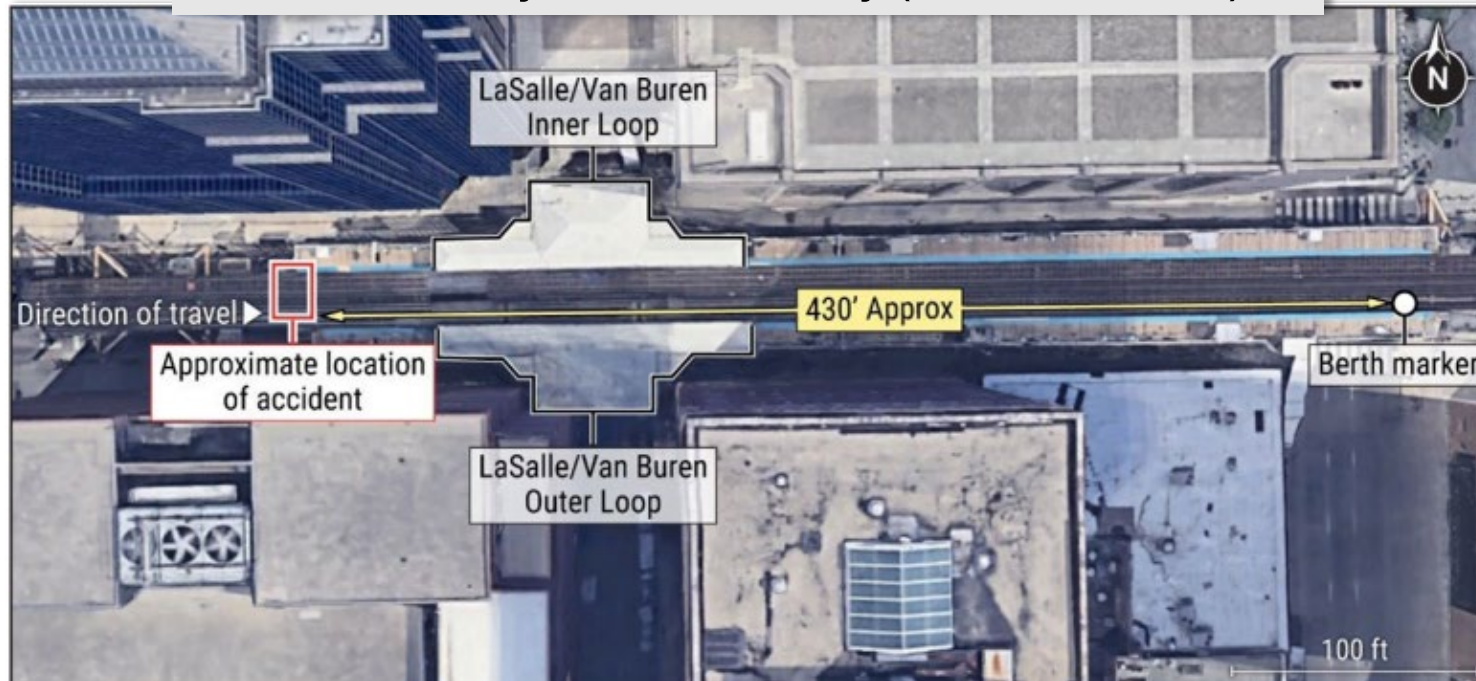


Recording



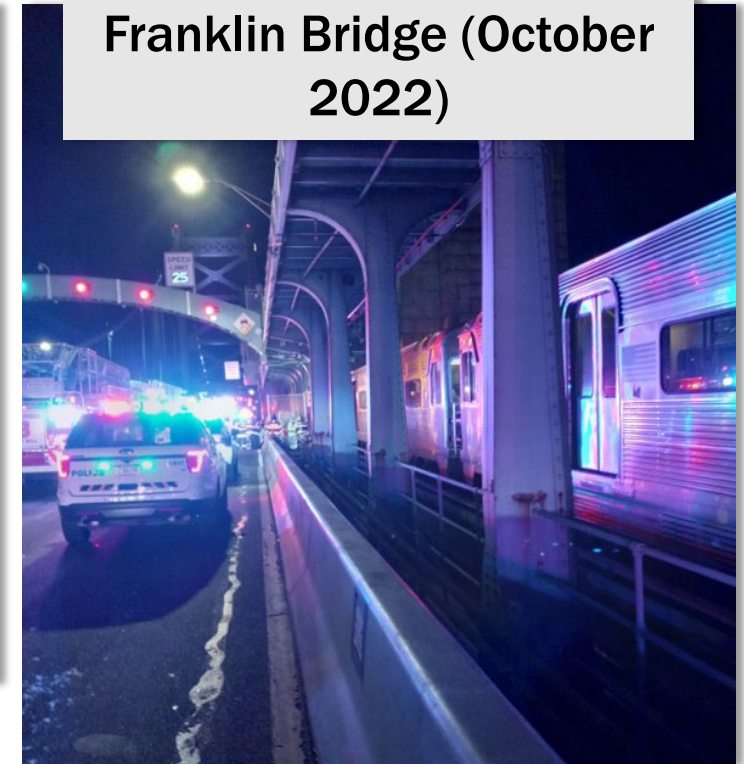
Right-of-Way Issues

CTA roadway worker fatality (October 2022)



Source: NTSB

PATCO contractor fatalities on Benjamin Franklin Bridge (October 2022)



Source: WPVI-TV Philadelphia, PA

Rail Transit Roadway Worker Protection (RWP) NPRM

FTA plans to issue for public comment a Notice of Proposed Rulemaking (NPRM) with proposed minimum safety standards for Rail Transit Roadway Worker Protection (RWP).

Minimum safety standards would help prevent:

- Accidents
- Incidents
- Fatalities
- Injuries to transit workers who may access the roadway during performance of work



**Link to the FTA RWP
Report Summary
(February 2022)**

Thank you!

Elliott Shepherd

202-253-7002

elliott.shepherd@dot.gov



U.S. Department of Transportation
Federal Transit Administration