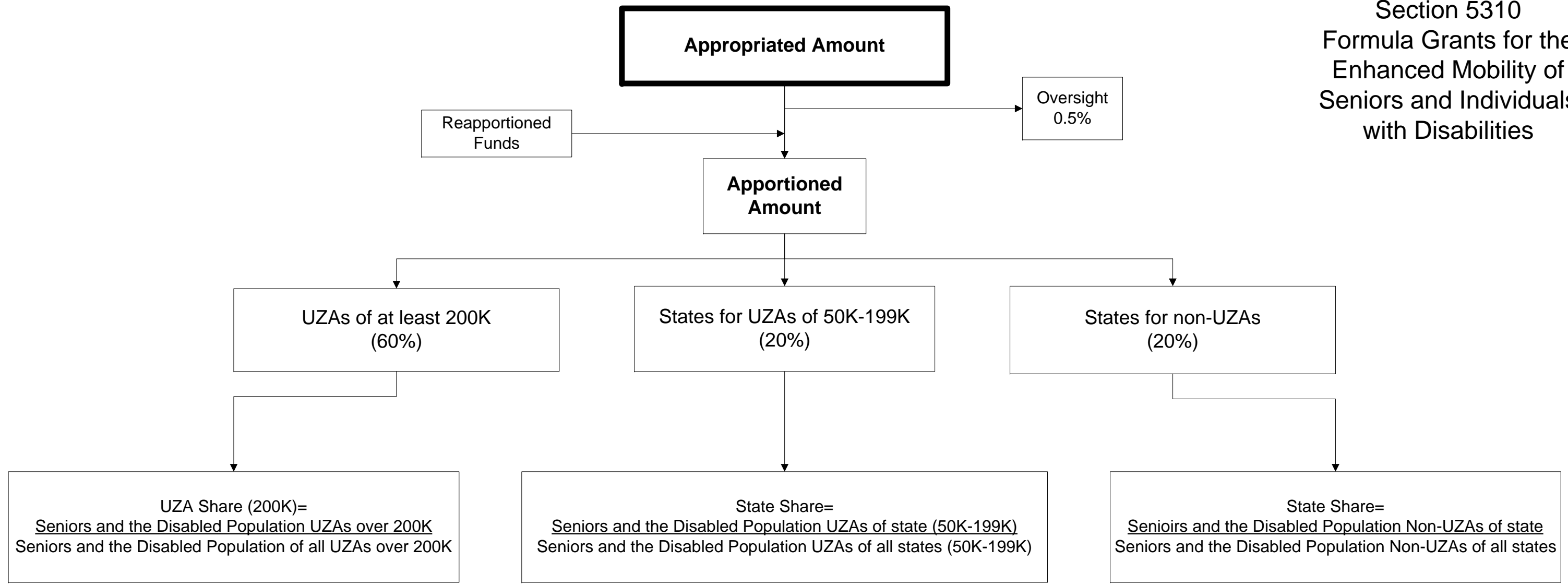


UZA = Urbanized Area
Non-UZA = Portions of State outside of Urbanized Area

Section 5310 Formula Grants for the Enhanced Mobility of Seniors and Individuals with Disabilities



UZA Share (200K)=
Seniors and the Disabled Population UZAs over 200K
Seniors and the Disabled Population of all UZAs over 200K

State Share=
Seniors and the Disabled Population UZAs of state (50K-199K)
Seniors and the Disabled Population UZAs of all states (50K-199K)

State Share=
Seniors and the Disabled Population Non-UZAs of state
Seniors and the Disabled Population Non-UZAs of all states