

FTA SGR Update

Aaron C. James, Sr.

Federal Transit Administration

Director-Office of Engineering

Washington, DC



Presentation Outline

- The SGR Problem
- Actions Taken by FTA Pre Map-21
- Timeline for Deliverables
- Questions

SGR Initiative

Step 1: Define the Problem

Step 2: Develop Strategy

Step 3: Implement Work Plan

Step 4: Evaluate Results

Defining the SGR Problem

- Two reports were key in FTA defining the SGR problem:
 - 2010 SGR Assessment
 - Transit Asset Management Systems Scan

Defining the SGR Problem

- Present funding levels insufficient to maintain system in SGR
- Inadequate Asset Management Plans
- Insufficient Inventory Systems
- No Collection of Best Practices
- Lack of Technical Assistance & Training

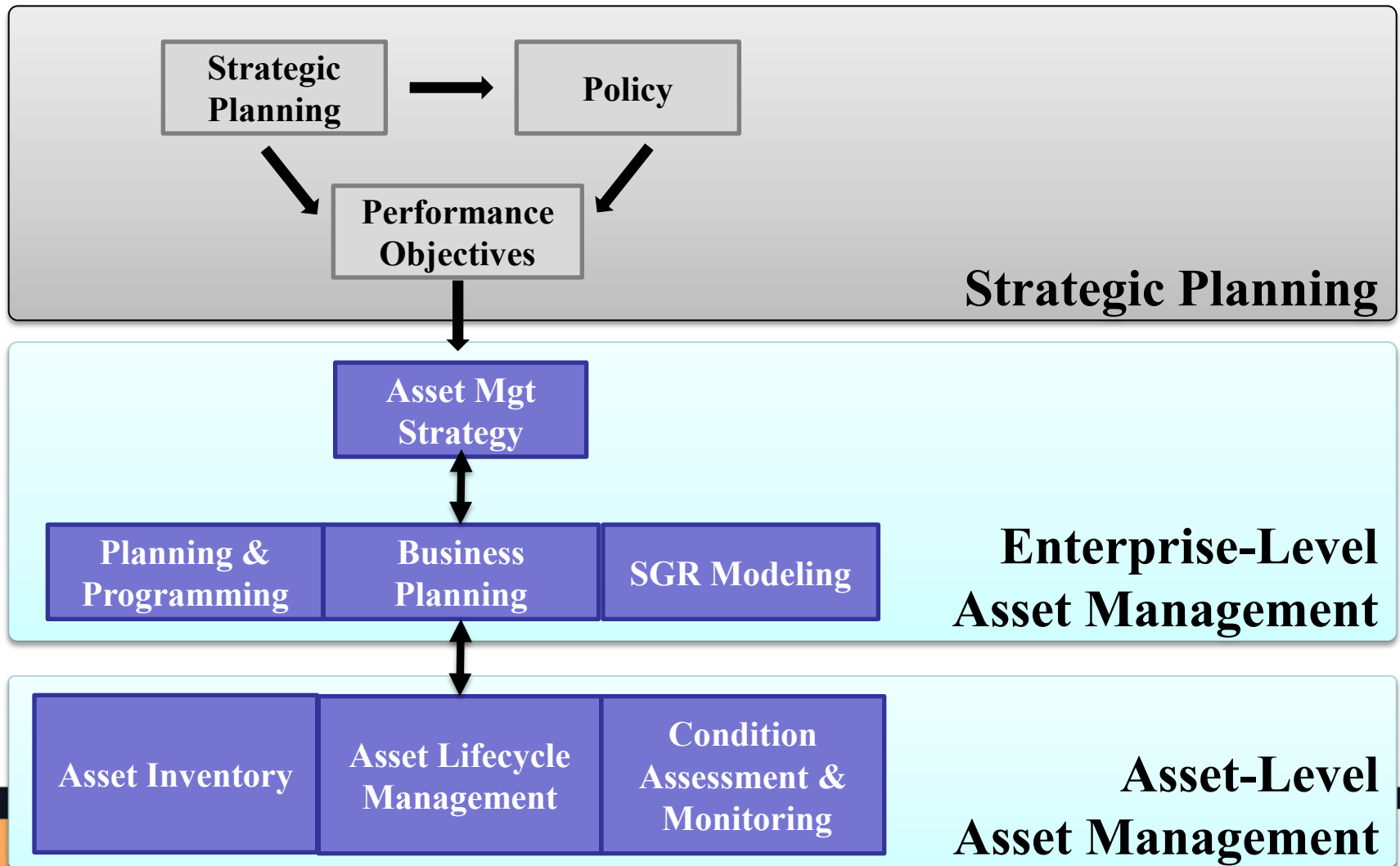
SGR Strategy

- Conduct Additional Research
- Provide Technical Assistance
- Explore Funding Possibilities
- Lead Industry Outreach

Additional Research Projects

- **Asset Management Framework**
 - ✓ Research and develop TAM framework including a guidance document that will describe essential elements of transit asset management and how they could be implemented.
- **Inventory Development & Integration**
 - ✓ Research how hierarchical structures can be designed to combine detailed asset data and how maintenance and life-cycle information can be used to infer the conditions of these assets.

Research & Pilot Projects... Asset Management Framework



Research & Pilot Projects... Asset Management Framework

Vehicles

Rail Vehicles & Fixed
Non-Revenue
Vehicles

Buses & Non-
Revenue Vehicles

Facilities & Stations

Rail Maintenance
Facilities

Bus Maintenance
Facilities

Private-Use
Administrative
Facilities

Public-Use
Administrative
Facilities

Trainway & Track Elements

Trainway (mainline)

Trainway (yard)

Trainway Support
Structures/Facilities

Trainway Ancillary
Structures

Trackwork

Systems

Elevators, Escalators,
and Moving
Sidewalks

Early Warning
Response and Rapid
Response Systems

Traction
Electrification
Systems

Signals &
Communications

Building & Facility
Services (MEP)

Research & Pilot Projects...

Asset Inspection & Maintenance System

Metrolink Structure Directory

Group	
Mile Post	15.40 to 16.25
Name	Eads Bridge & Piers
Maps	Google Bing



Structure Files

- [1990 Existing Plans](#)
- [2002 Repair Plans \(As-Built\)](#)
- Maintenance/Repair History
- [Photographs](#)

Evaluation Reports

- [2010 Inspection Report/Database](#)
- [2009 Inspection Report](#)
- [2008 Inspection Report/Database](#)
- [2007 Inspection Report/Database](#)
- [2006 Inspection Report/Database](#)
- [2005 Inspection Report/Database](#)
- [1999 Inspection Report](#)

Structure Specific Files

Technical Assistance

- TAM Pilots
 - ✓ Demonstrate innovative approaches to transit systems planning that incorporate the long-term costs of maintaining the system in a SGR into the planning process
 - ✓ Provide an asset inventory database (register) with sufficient capacity and functionality to track all categories of transportation capital assets

Technical Assistance

- TAM Pilots
 - ✓ Demonstrate proven asset management methods taking into account other industry practices that can be effectively applied in the transportation industry
 - ✓ Provide methodologies to better prioritize reinvestment needs
 - ✓ Approaches to simplify collecting asset condition data (for example, use of dedicated personal digital assistants (PDA's) while walking track or inspecting roadside equipment and furniture)

Technical Assistance...

TAM Pilot Projects

TAM Pilot Project Award Recipient	Allocation
Peninsula Corridor Joint Powers Board (CALTRAIN)	\$750,000
Utah Transit Authority (UTA)	\$500,000
Regional Transportation Authority (Chicago)	\$800,000
Massachusetts Bay Transportation Authority	\$950,000
Virginia Department of Rail and Public Transportation	\$700,000
Valley Regional Transit (Meridian, Idaho)	\$300,000

Technical Assistance...

TAM Pilot Projects

- Major Deliverables
 - ✓ Innovative and/or improved asset management methods developed as part of this pilot program
 - ✓ Asset management tools that will promote better management of safety-related public transportation capital assets
 - ✓ Asset management tools and practices that can be implemented at other agencies of varying sizes and modal composition
 - ✓ 40 hours of technical assistance in the form of information exchange forums such as webinars, meetings, teleconferences, or workshops

Technical Assistance...

TERM Lite

- **TERM Lite Pilot**
 - ✓ Provide transit agencies with a tool to evaluate long-term reinvestment needs that is compatible with FTA national estimates and uses the same format for asset inventory data.
- **Major Deliverables**
 - ✓ TERM-Lite Capital Investment Planning tool (available on the FTA website)

Technical Assistance...

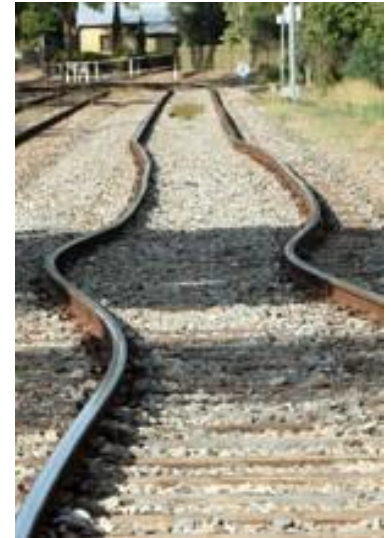
NTD Reporting

- **NTD Data Collection Module**
 - ✓ Collect more reliable asset inventory data from the industry on an annual basis to support needs assessment and performance metrics.
- **Major Deliverables**
 - ✓ An industry tested and vetted spreadsheet tool for reporting asset inventory data to the NTD

Technical Assistance...

SGR Climate Adaptation Pilots

- SGR Climate Adaptation Pilots
 - ✓ FTA is funding 7 pilot projects to assess vulnerabilities of public transportation systems to climate change impacts such as heat waves and flooding.
 - ✓ 2 of the pilot projects have an emphasis on determining how TAM systems can be used to support strategic investment decision-making to respond to climate change impacts.



Timeline for Completion

AM Framework & Inventory Development & Integration	July/August 2012
TERM Lite Pilot	Sept/Oct 2012
TAM Pilots	March/April 2013
Climate Adaptation Pilots	May 2013
NTD Data Collection	October 2014
NTI Introduction to Asset Management Course	Ongoing
SGR Roundtables	Ongoing

Questions/FTA Contacts

Asset Management Research Projects	Terrell.Williams@dot.gov Raj.Wagley@dot.gov
TAM Pilots & SGR Asset Management Systems	Chris.Nutakor@dot.gov Aaron.James@dot.gov
Term Lite & NTD Pilots	Keith.Gates@dot.gov
SGR Climate Adaptation Pilot	Tina.Hodges@dot.gov