



2017

Federal Transit Administration  
Roundtable Meeting

Connecticut TAM Group Plan

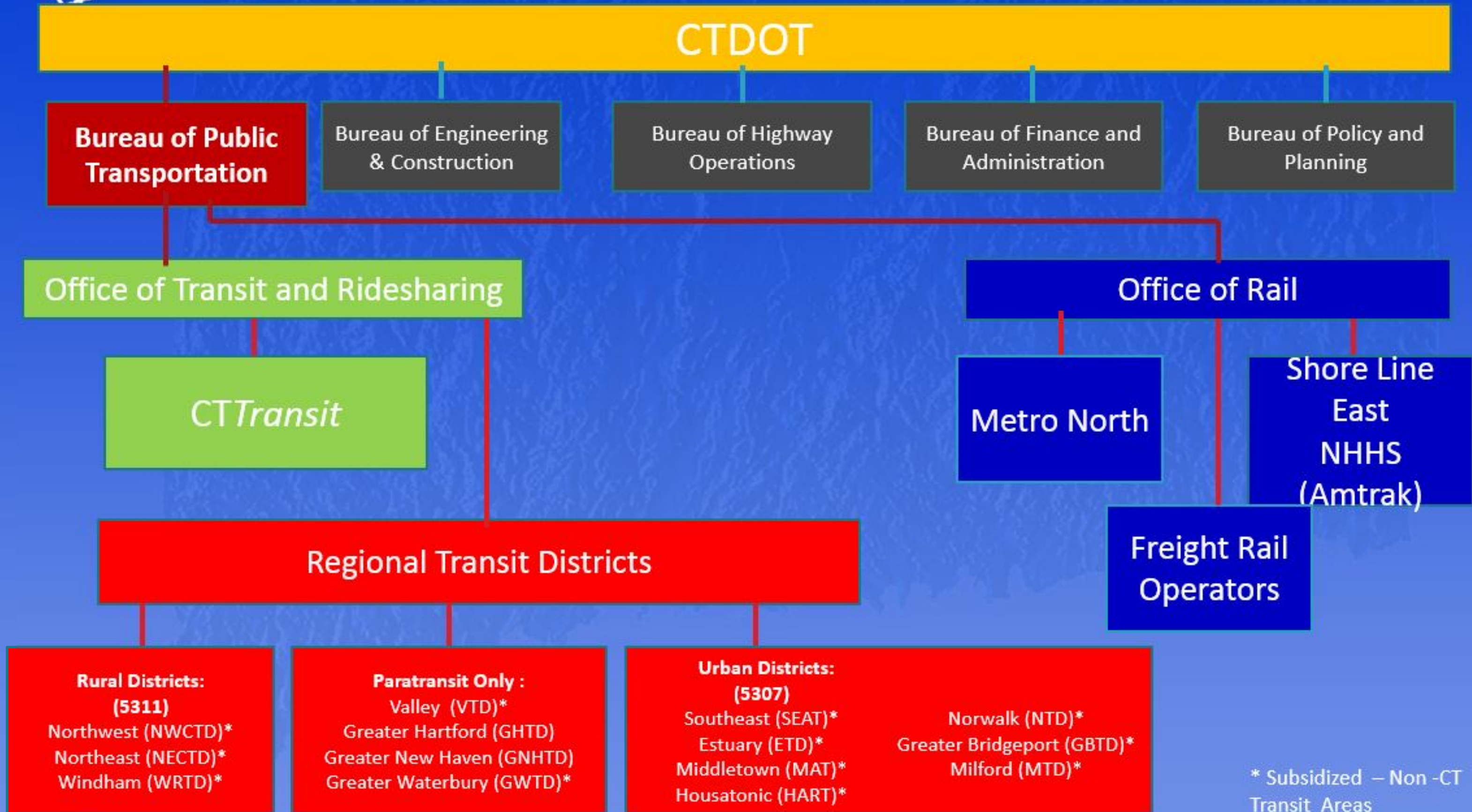


**Sharon Okoye, Transit Asset Management Lead  
Connecticut Department of Transportation**





# Public Transportation Operators







# Overview of Bus and Rail Operations

## Expenses and Subsidy

- Bus (CTTransit, Express, ADA)
  - \$221 M in annual operating expenses; \$180M CTDOT Subsidy
- For Rail (Metro North and Shore Line East (SLE))
  - \$380M in annual operating expenses; \$146M CTDOT Subsidy

## Ridership (annual)

- Bus and ADA - 43,000,000 passenger trips
- Rail trips (Including SLE) – 40,950,000 passenger trips





# Public Trans Assets

- Asset Records 4,793 items
- 5 YR Capital Plan \$ 4.4 billion
- Approximate Backlog - \$3 billion
  - 480 rail vehicles (60 - M8's on order)
  - 1,236 buses and paratransit vehicles
  - 235 track miles Metro North New Haven Line (in CT) and 3 branch lines
  - 9.4 mile *CTfastrak* Bus Rapid Transit (BRT) System
  - 96 Rail and bus maintenance and passenger facilities (3 new bus maintenance garages design/construction)





# CTDOT Tier 1 Plan Tier 2 Group Plan





# Intent to Participate Group Plan Example Agreement





# Group Plan Participants

## TIER II

### Urban Transit Providers

Greater Bridgeport Transit (GBT)  
Middletown Area Transit (MAT)  
Milford (MTD)  
Southeast Area Transit (SEAT)  
Estuary Transit District (ETD)  
Valley Transit District (VTD)  
Norwalk Transit District (NTD)  
Housatonic Area Transit (HART)  
Greater New Haven Transit District (GNHTD)

### Rural Transit Providers

Northwestern Transit District (NWCTD)  
Northeastern Transit District (NECTD)  
Windham Transit District (WRTD)

### Twelve Transit Districts

*476 Revenue Vehicles*

*52 Non Revenue Service Vehicles*

*15 Facilities*



## Intent to Participate in Tier II Group Plan

In accordance with Section 625.27 of the Transit Asset Management Rule, the Department is required to be a group plan sponsor for subrecipients under the Rural Area Formula Program at a minimum, and can include Tier II providers, direct recipients under the Urban Formula Program, by invitation.

The Department is hereby formally inviting you to participate in its Transit Asset Management Group Plan which will be developed in concert with its formal Asset Management Plan.

|

\_\_\_\_\_ I will participate in the Department of Transportation's Tier II Transit Asset Management Group Plan.

Concurrence: \_\_\_\_\_  
Executive Director, Transit Agency

Date: \_\_\_\_\_





# Target Setting Process

- Formal Invite to Urban and Rural Transit Districts -Tier 2 sub recipients for Group Plan – 100 % acceptance for participation
- Asset Management Unit established data charts for rolling stock, equipment and facilities inventory and respective asset classes
- Data Charts were sent out to districts for verification. Survey developed to collect facility condition assessment information



# Target Setting Process

- Group meetings to determine existing SGR Performance Measures for asset classes
- Requested approval for Custom Useful Life Benchmarks for Rolling Stock – FTA Approved as of December 2<sup>nd</sup>
- Set targets based on projected SGR Status at end of FY 2017
  - Vehicles Obligated by end of FY 17
  - Facility Capital Repairs completed by end of FY 17
- MPO's provided Resolution of Support for Tier 1 and Group Plan Targets





# Group Plan Targets

## Target Summary:

Greater Bridgeport, Middletown, Milford, Southeast, Northwestern, Northeastern, Greater New Haven, Windham, Estuary, Valley, Norwalk, Housatonic Area Transit

### Revenue Vehicle Classes Total

Goal: Maintain the vehicle class of rolling stock in a State of Good Repair

Asset Class	Performance Metric	Asset Count	Performance Measure	1 Year Forecast	Goal / Target
Trolley	ULB	1 Vehicle	0%	0%	7%
Bus	ULB	184 Vehicles	43%	15%	14%
Cutaway Bus	ULB	286 Vehicles	41%	16%	17%
Minivan	ULB	5 Vehicles	0%	0%	17%

### Service Vehicle Classes Total

Goal: Maintain the vehicle class of rolling stock in a State of Good Repair

Asset Class	Performance Metric	Asset Count	Performance Measure	1 Year Forecast	Goal / Target
Rubber and Tire Vehicles	ULB	23 Vehicles	26%	26%	7%
Automobiles	ULB	9 Vehicles	56%	56%	20%
Van	ULB	3 Vehicles	67%	67%	17%
Minivan	ULB	2 Vehicles	0%	0%	17%
Sport Utility Vehicle	ULB	15 Vehicles	87%	60%	20%

### Facilities Classes Total

Goal: Maintain all Facilities in a State of Good Repair

Asset Class	Performance Metric	Asset Count	Performance Measure	1 Year Forecast	Goal / Target
Passenger and Parking	TERM (1-5)	4 Facilities	0%	0%	0%
Admin and Maintenance	TERM (1-5)	11 Facilities	0%	0%	0%



# Next Steps/Challenges

## ***Next Steps:***

- Initiate Group Plan Development project – June 30, 2017
- Working Groups for Technical Elements of Plan

## ***Challenges:***

- Identifying Group Plan participants in addition to Transit Districts
- Group investments prioritization - Agreement amongst participants
- Identifying Funding for Group Plan Updates





***Sharon P. Okoye***  
***Transportation Engineer 3***  
***Transit Asset Management Lead***  
***Bureau of Public Transportation***  
***Asset Management Unit***  
***Office: (860) 594-2367***  
***sharon.okoye@ct.gov***