

Transit Asset Management Granularity: How deep do you go? The Data may overwhelm you!

Paul Edwards, P.E.
Director of Asset Management
Utah Transit Authority

News Alert: Salt Lake City, August 29, 2017

**New ferry service on the Great Salt Lake will
provide better access to Idaho Lottery
players**

Idaho announced today as part of a global MPO planning effort, the launching of new ferry service on the Great Salt Lake. The service will run from the Salt Lake Marina past the Spiral Jetty to Promontory Point where great access to Idaho will increase tourism and lottery ticket purchases.

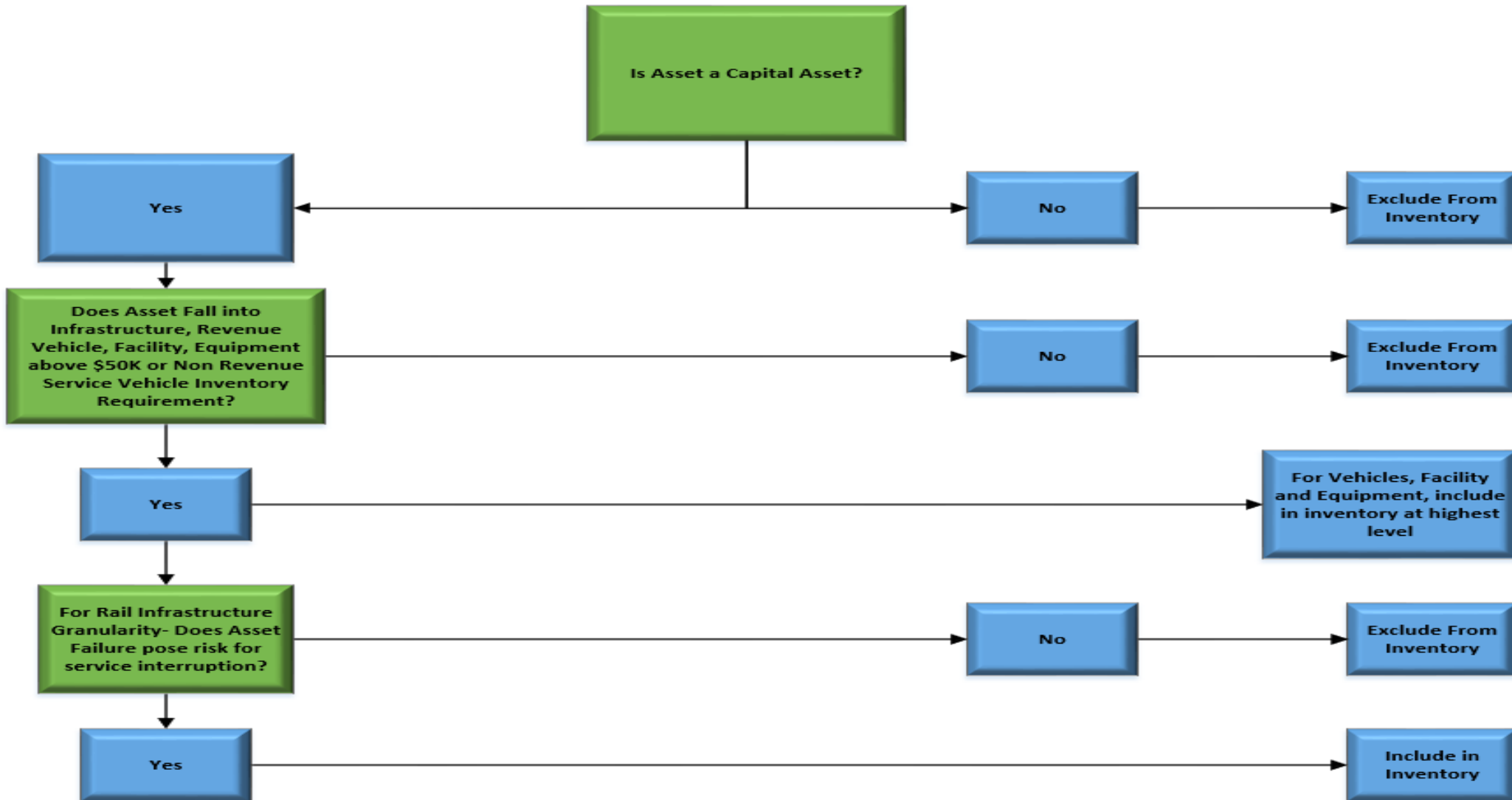
UTA Simplified Asset Management Model



Important elements of the inventory

- Location of asset: Physical, GPS, mile post etc...
- Description of asset
- System asset association
- Quantity: Each, linear foot, etc...
- Design life
- Expected life
- Original Cost
- Replacement cost
- Year procured: Age of the asset
- Determine risk zone and impact of failure
- FTA continuing control elements?

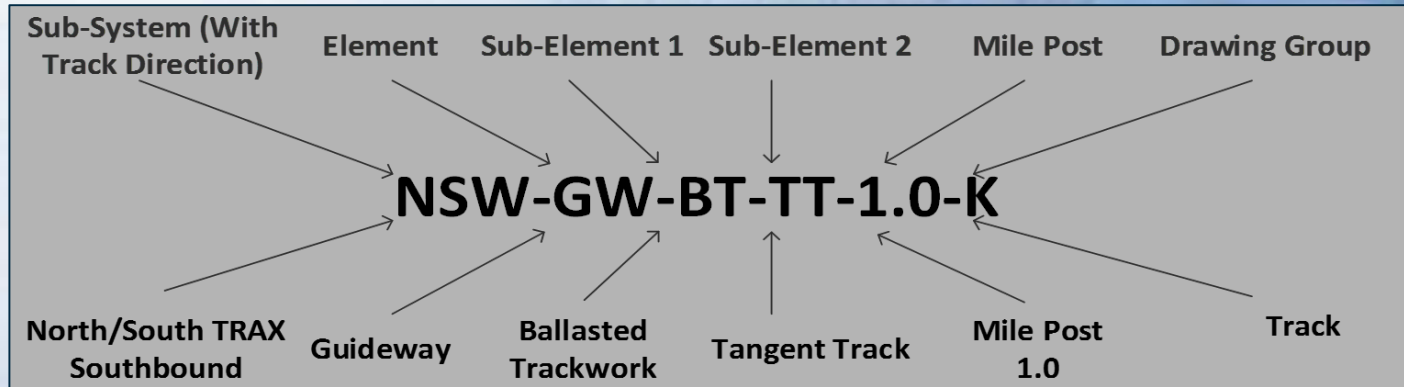
To include in the inventory or not?



Sample Breakout on Rail Infrastructure Elements

Asset Category	Element	Sub-Element 1
Infrastructure	Guideway/Track	Ballasted
		Embedded
		Direct Fixiation
		Guideway Curb
		Guideway Fence
		Guideway Drainage
	Structures	Bridge
		Retaining Wall
		Sound Wall
	Train Control	Signals
		Interlockings (INT)
		Control Points (CP)
		Cut Section (CS)
		Grade Crossings (GC)
		Traffic Signal (TS)
	Electrification	Coupler Case (CC)
		Traction Power Substation (TPSS)
	Systems	Office System - SCADA
Overhead Catenary System (OCS)		
Rolling Stock		
Equipment		
Facilities		

Developing an Asset Code



- Each asset has been identified by a specific asset code. The unique code provides high level detail about the asset and it's characteristics.

Element	Sub-Element 1	Sub-Element 2	Sub-Element 3
GUIDEWAY (GW)	Ballasted Trackwork (BT)	Tangent Track (TT)	
		Curved Track (CT)	Pre-Curved Rail (PCR)
		Guarded Track (GT)	
		Tangent Platform Track (TPT)	
		Curved Platform Track (CPT)	
		Guarded Platform Track (GPR)	
		Special Trackwork (ST)	Diamond crossover (DIXO)
			Single crossover (XO)
			Restraining Rail (RR)
			High Strength Rail (HSR)
		Double Crossover (DOXO)	
		Grade Crossing Panels (GCP)	
		Buffer Stops (BS)	
	Embedded Track (ET)	Tangent Track (TT)	
		Curved Track (CT)	
		Guarded Track (GT)	
		Tangent Platform Track (TPT)	
		Curved Platform Track (CPT)	
		Guarded Platform Track (GPR)	
		Special Trackwork (ST)	Diamond crossover (DXO)
			Single crossover (XO)
			Restraining Rail (RR)
			High Strength Rail (HSR)
	Direct Fixation Track (DF)	Tangent Track (TT)	
		Curved Track (CT)	
		Guarded Track (GT)	
		Tangent Platform Track (TPT)	
		Curved Platform Track (CPT)	
		Guarded Platform Track (GPR)	
		Special Trackwork (ST)	Diamond crossover (DXO)
		Single crossover (XO)	
		Restraining Rail (RR)	
		High Strength Rail (HSR)	

Example Asset Code:
NS-GW-BT-TT-1.0-K
CRS-GW-BT-HSR-3.0-C

Things to consider when deciding how granular to go with the inventory

- Develop an overall asset management philosophy
- Start inventory at a very high level
- The deeper you go the more data you need and the more data you produce
- Define early the criteria for elements that must be included in the inventory
- Consider the type of performance element required for each item(age, performance, condition, comprehensive)

Key recommendation

Keep it
SIMPLE

Development of a comprehensive Asset Management System is a journey not a destination. Paul Edwards



Questions?

Paul Edwards, PE
pedwards@rideuta.com