

PARTNERSHIPS IN TRANSIT

PHILADELPHIA, SEPTEMBER 2008



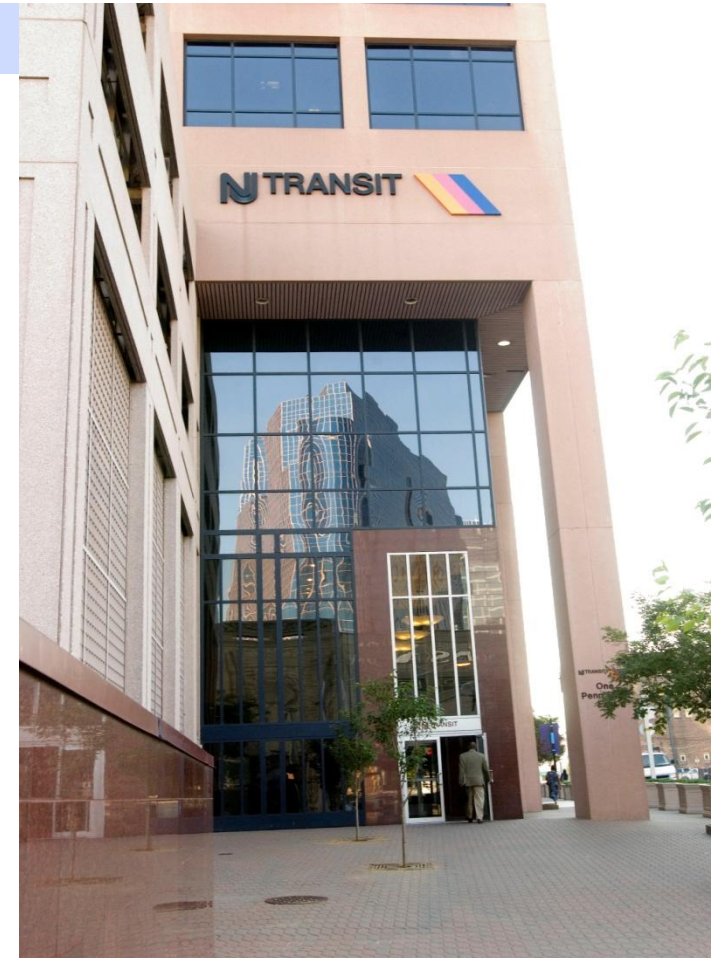
Steven Santoro
Assistant Executive Director



PARTNERSHIPS IN TRANSIT

ABOUT NJ TRANSIT

- Statewide agency.
- Three Metropolitan Planning Organizations.
- Operate:
 - Commuter rail.
 - Light rail.
 - Bus.
 - Paratransit services.
- Coordinate with:
 - Private bus carriers.
 - State and local paratransit providers.
- Coordinate with cross-Hudson ferry operations.
- Fleet:
 - Commuter rail – 1 100 coaches/locomotives.
 - Buses – 2200.
 - Light rail – 72.
 - Paratransit – 250.





PARTNERSHIPS IN TRANSIT

NJ TRANSIT LEGISLATIVE TOOLS

- Design-Build-Operate-Maintain (DBOM) and finance.
- Condemnation/Eminent Domain.
- Private railroad master agreement.
- Master utility agreement.
- Municipal agreement.
- Multi-year funding.





PARTNERSHIPS IN TRANSIT

NJ TRANSIT PUBLIC PRIVATE PARTNERSHIP EXPERIENCE - HIGHLIGHTS

PROJECT

- Hudson Bergen Light Rail - MOS1
- Hudson Bergen Light Rail - MOS2
- RiverLINE Light Rail
- Hudson Bergen 8th Street Extension - MOS3
- Transit-Oriented-Development
- Hamilton Parking Deck
- Ferry Operations

SCOPE

- 9 miles
- 7 miles
- 34 miles
- 1 mile
- Mixed-use
- 2000 spaces
- Terminal

CONTRACT TYPE

- DBOM & Finance
- DBOM
- DBOM
- DB+
- Property Development
- DBOM & Finance
- Lease/Revenue Share





PARTNERSHIPS IN TRANSIT



CASE STUDY – HUDSON BERGEN LIGHT RAIL MOS1

- DBOM and financing:
 - 15-year Operate and Maintain term.
 - Un-priced option for MOS2 and MOS3.
 - Financing – essentially Bridge Loan.
- Multi-year funding.



PARTNERSHIPS IN TRANSIT



CASE STUDY – HUDSON BERGEN LIGHT RAIL MOS1

- Procurement process:
 - RFP - price and other factors.
 - Industry reviews.
 - Pre-qualifications.
 - Parent guarantee/bonding.
 - Proposal stipends.



PARTNERSHIPS IN TRANSIT



CASE STUDY – HUDSON BERGEN LIGHT RAIL MOS1

- Condemnation/Eminent Domain:
 - Two-step process.
 - Environmental.
 - Valuation.
- Master utility agreement:
 - Electric and gas.
 - Other “Dry” services.
- Private railroad master agreement:
 - Freight rail relocation and coordination.
- Municipal agreements.



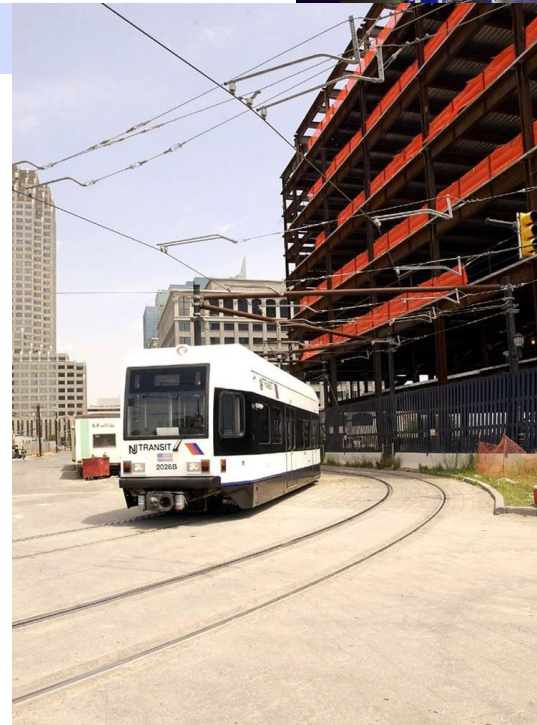


PARTNERSHIPS IN TRANSIT



RESULTS – HUDSON BERGEN LIGHT RAIL MOST

- 40,000 passenger trips per day.
- Spurred economic development.
- Continued ridership growth.



PARTNERSHIPS IN TRANSIT



MOVING FORWARD

- Future light rail extensions related to private development.
- Future Public Private Partnerships:
 - Convert surface parking lots to Transit-Oriented-Developments.
- Private construction of additional stations.

