

### Cities Area Transit (CAT)

#### General Information

##### Urbanized Area (UZA) Statistics - 2010 Census

Grand Forks, ND-MN	
Square Miles	24
Population	61,270
Population Ranking out of 465 UZAs	440
Other UZAs Served	

##### Service Area Statistics

Square Miles	9
Population	56,534

##### Service Consumption

Annual Passenger Miles	1,853,421
Annual Unlinked Trips	416,868
Average Weekday Unlinked Trips	1,454
Average Saturday Unlinked Trips	885
Average Sunday Unlinked Trips	0

##### Service Supplied

Annual Vehicle Revenue Miles	573,366
Annual Vehicle Revenue Hours	45,234
Vehicles Operated in Maximum Service	18
Vehicles Available for Maximum Service	25
Base Period Requirement	7

#### Financial Information

<b>Fare Revenues Earned</b>		<b>\$396,530</b>
<b>Sources of Operating Funds Expended</b>		
Fare Revenues	(14%)	\$396,530
Local Funds	(21%)	\$608,192
State Funds	(11%)	\$307,537
Federal Assistance	(42%)	\$1,194,909
Other Funds	(13%)	\$358,491
<b>Total Operating Funds Expended</b>		<b>\$2,865,659</b>
<b>Sources of Capital Funds Expended</b>		
Local Funds	(0%)	\$0
State Funds	(9%)	\$117,157
Federal Assistance	(91%)	\$1,163,613
Other Funds	(0%)	\$0
<b>Total Capital Funds Expended</b>		<b>\$1,280,770</b>

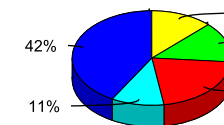
#### Summary Operating Expenses

Salary, Wages, Benefits	\$1,531,472
Materials and Supplies	\$435,588
Purchased Transportation	\$656,694
Other Operating Expenses	\$241,905
<b>Total Operating Expenses</b>	<b>\$2,865,659</b>

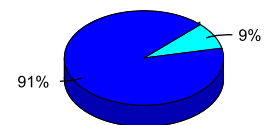
#### Vehicles Operated in Maximum Service and Uses of Capital Funds

Mode	Directly Operated	Purchased Transportation <sup>1</sup>	Revenue Vehicles	Systems and Guideways	Facilities and Stations	Other	Total
Bus	8	0	\$0	\$1,098,482	\$157,466	\$24,822	\$1,280,770
Demand Response	0	10	\$0	\$0	\$0	\$0	\$0
<b>Total</b>	<b>8</b>	<b>10</b>	<b>\$0</b>	<b>\$1,098,482</b>	<b>\$157,466</b>	<b>\$24,822</b>	<b>\$1,280,770</b>

#### Sources of Operating Funds Expended



#### Sources of Capital Funds Expended

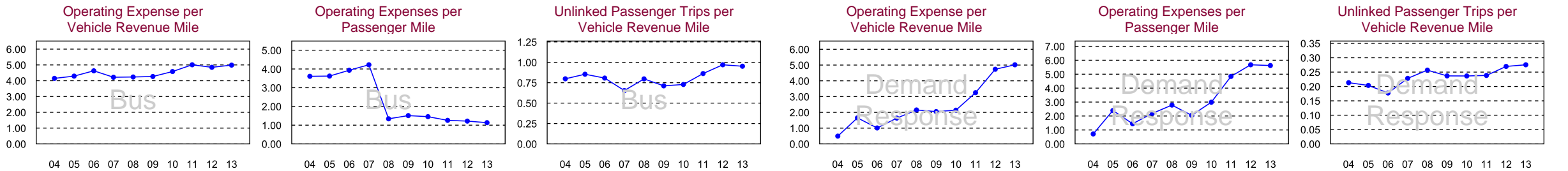


#### Modal Characteristics

Mode	Operating Expenses <sup>1</sup>	Fare Revenues <sup>1</sup>	Uses of Capital Funds	Annual Passenger Miles	Annual Vehicle Revenue Miles	Annual Unlinked Trips	Annual Vehicle Revenue Hours	Fixed Guideway Directional Route Miles	Vehicles Available for Maximum Service	Average Fleet Age in Years	Vehicles Operated in Maximum Service	Peak to Base Ratio	Percent Spares
Bus	\$1,908,557	\$242,717	\$1,280,770	1,683,145	382,632	364,317	25,124	N/A	11	5.2	8	1.14	38%
Demand Response	\$957,102	\$153,813	\$0	170,276	190,734	52,551	20,110	N/A	14	3.2	10	N/A	40%

#### Performance Measures

Mode	Service Efficiency		Service Effectiveness		Service Effectiveness	
	Operating Expense per Vehicle Revenue Mile	Operating Expense per Vehicle Revenue Hour	Operating Expense per Passenger Mile	Operating Expense per Unlinked Passenger Trip	Unlinked Passenger Trips per Vehicle Revenue Mile	Unlinked Passenger Trips per Vehicle Revenue Hour
Bus	\$4.99	\$75.97	\$1.13	\$5.24	0.95	14.50
Demand Response	\$5.02	\$47.59	\$5.62	\$18.21	0.28	2.61



<sup>1</sup> Excludes data for purchased transportation reported separately