

# Confederated Tribes of the Colville Indian Reservation

## 2014 Annual Agency Profile

### General Information

#### Federally Recognized Tribal Statistical Areas

51 Colville Reservation and Off-Reservation Trust Land, WA

#### Service Consumption

168,429 Annual Unlinked Trips (UPT)

#### Service Supplied

261,283 Annual Vehicle Revenue Miles (VRM)

66,183 Annual Vehicle Revenue Hours (VRH)

#### Database Information

NTDID: 00004

Reporter Type: Tribal Reporter

### Financial Information

#### Sources of Operating Funds Expended

Fare Revenues	\$0	0.0%
Local Funds	\$0	0.0%
State Funds	\$0	0.0%
Federal Assistance	\$1,846,252	100.0%
Other Funds	\$0	0.0%

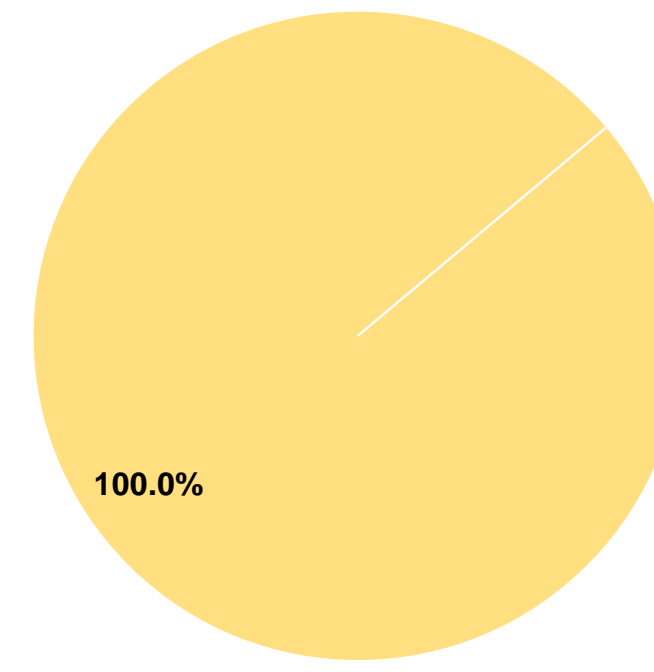
**Total Operating Funds Expended \$1,846,252 100.0%**

#### Sources of Capital Funds Expended

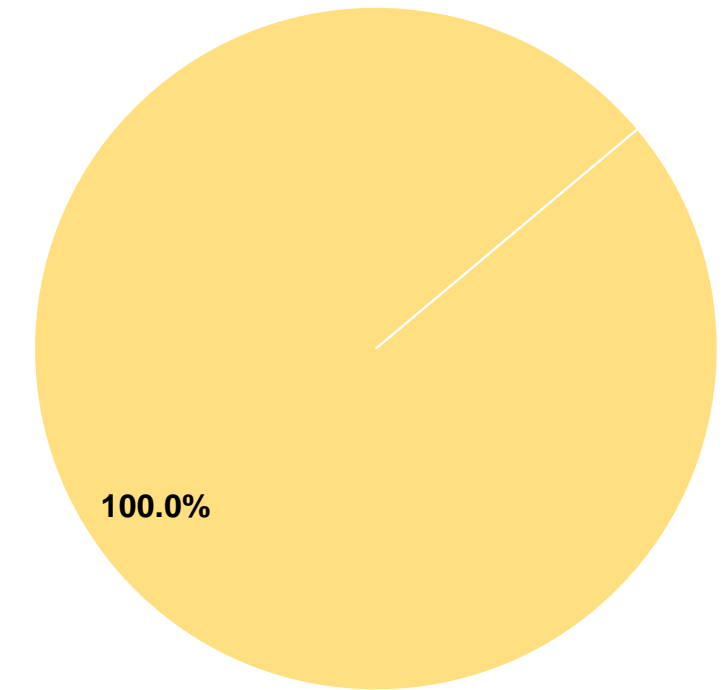
Fare Revenues	\$0	0.0%
Local Funds	\$0	0.0%
State Funds	\$0	0.0%
Federal Assistance	\$3,091	100.0%
Other Funds	\$0	0.0%

**Total Capital Funds Expended \$3,091 100.0%**

#### Operating Funding Sources



#### Capital Funding Sources



### Modal Characteristics

#### Operation Characteristics

#### Vehicles Operated at Maximum Service

Mode	Directly Operated	Purchased Transportation	Operating Expenses	Fare Revenues	Uses of Capital Funds	Annual Unlinked Trips	Annual Vehicle Revenue Miles	Annual Vehicle Revenue Hours	Average Fleet Age in Years <sup>1</sup>
Ferryboat	1	-	\$1,705,782	\$0	\$3,091	155,582	20,617	5,891	33.0
Bus	2	-	\$140,470	\$0	\$0	12,847	240,666	60,292	5.0
<b>Total</b>	<b>3</b>	<b>-</b>	<b>\$1,846,252</b>	<b>\$0</b>	<b>\$3,091</b>	<b>168,429</b>	<b>261,283</b>	<b>66,183</b>	

#### Performance Measures

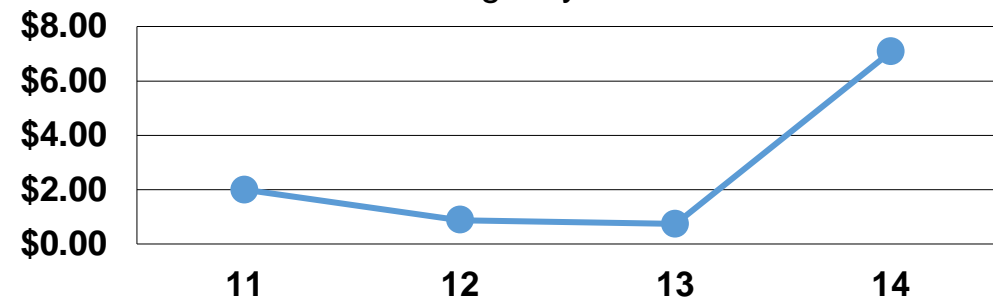
#### Service Efficiency

Mode	Operating Expenses per Vehicle Revenue Mile	Operating Expenses per Vehicle Revenue Hour
Ferryboat	\$82.74	\$289.56
Bus	\$0.58	\$2.33
<b>Total</b>	<b>\$7.07</b>	<b>\$27.90</b>

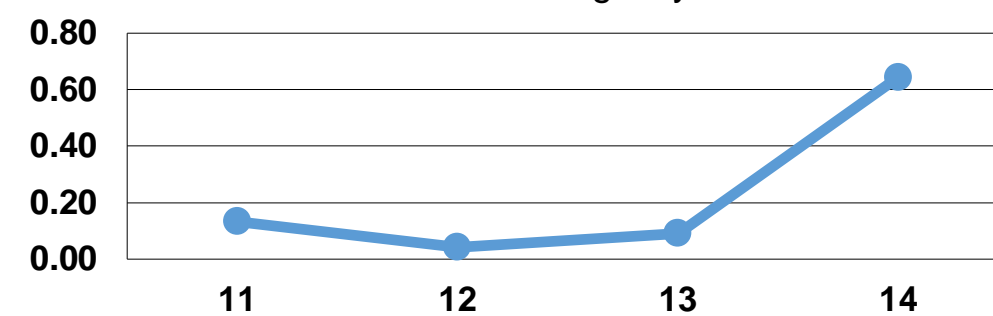
#### Service Effectiveness

Mode	Operating Expenses per Unlinked Passenger Trip	Unlinked Trips per Vehicle Revenue Mile	Unlinked Trips per Vehicle Revenue Hour
Ferryboat	\$10.96	7.5	26.4
Bus	\$10.93	0.1	0.2
<b>Total</b>	<b>\$10.96</b>	<b>0.6</b>	<b>2.5</b>

Operating Expense per Vehicle Revenue Mile: Agency Total



Unlinked Passenger Trips per Vehicle Revenue Mile: Agency Total



**Notes:**

<sup>1</sup>Demand Response - Taxi (DT) and non-dedicated fleets do not report fleet age data.