

The Tulalip Tribes of Washington (TTT)

2014 Annual Agency Profile

General Information

Federally Recognized Tribal Statistical Areas

Marysville, WA

Service Consumption

9,029 Annual Unlinked Trips (UPT)

Service Supplied

64,830 Annual Vehicle Revenue Miles (VRM)
5,073 Annual Vehicle Revenue Hours (VRH)

Database Information

NTDID: 00060

Reporter Type: Tribal Reporter

Financial Information

Sources of Operating Funds Expended

Fare Revenues	\$0	0.0%
Local Funds	\$15,617	7.8%
State Funds	\$0	0.0%
Federal Assistance	\$185,421	92.2%
Other Funds	\$0	0.0%

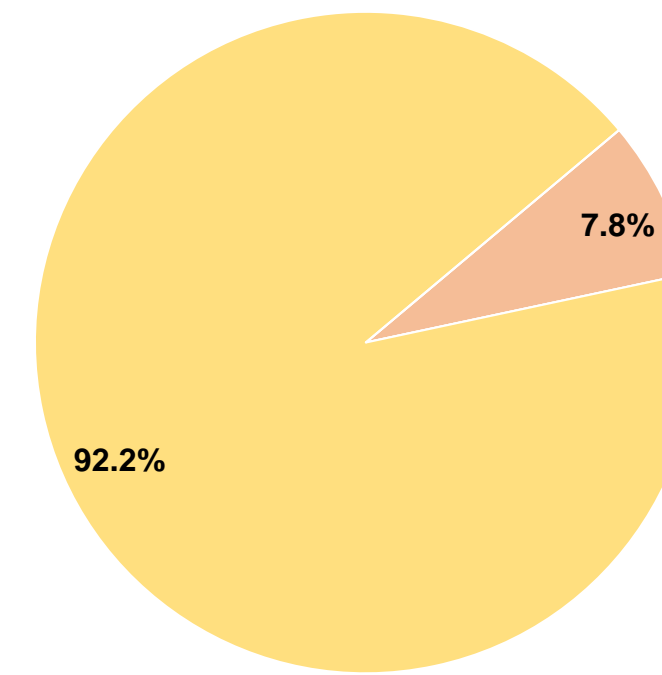
Total Operating Funds Expended \$201,038 100.0%

Sources of Capital Funds Expended

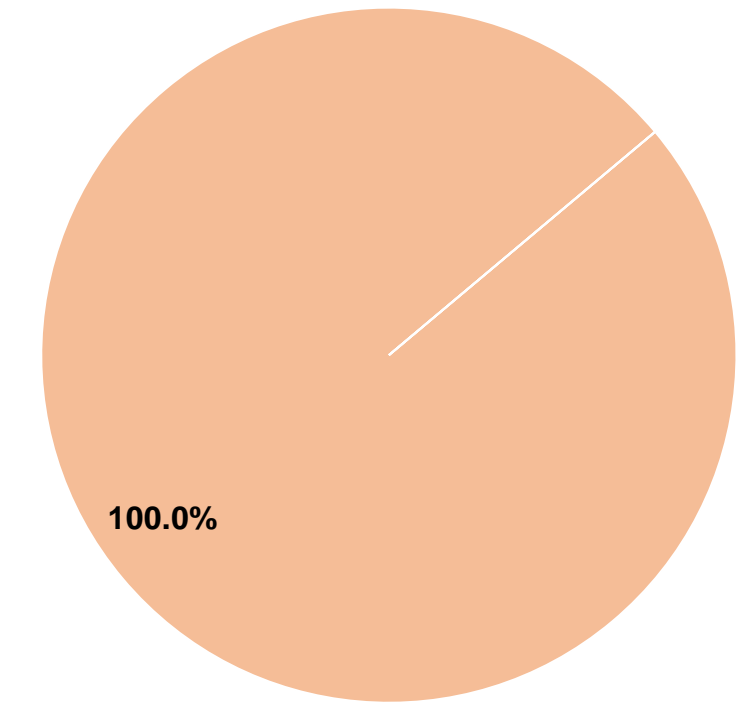
Fare Revenues	\$0	0.0%
Local Funds	\$19,879	100.0%
State Funds	\$0	0.0%
Federal Assistance	\$0	0.0%
Other Funds	\$0	0.0%

Total Capital Funds Expended \$19,879 100.0%

Operating Funding Sources



Capital Funding Sources



Modal Characteristics

Operation Characteristics

Vehicles Operated at Maximum Service

Mode	Directly Operated	Purchased Transportation	Operating Expenses	Fare Revenues	Uses of Capital Funds	Annual Unlinked Trips	Annual Vehicle Revenue Miles	Annual Vehicle Revenue Hours	Average Fleet Age in Years ¹
Bus	2	-	\$201,038	\$0	\$19,879	9,029	64,830	5,073	4.0
Total	2	-	\$201,038	\$0	\$19,879	9,029	64,830	5,073	

Performance Measures

Service Efficiency

Mode	Operating Expenses per Vehicle Revenue Mile	Operating Expenses per Vehicle Revenue Hour
Bus	\$3.10	\$39.63
Total	\$3.10	\$39.63

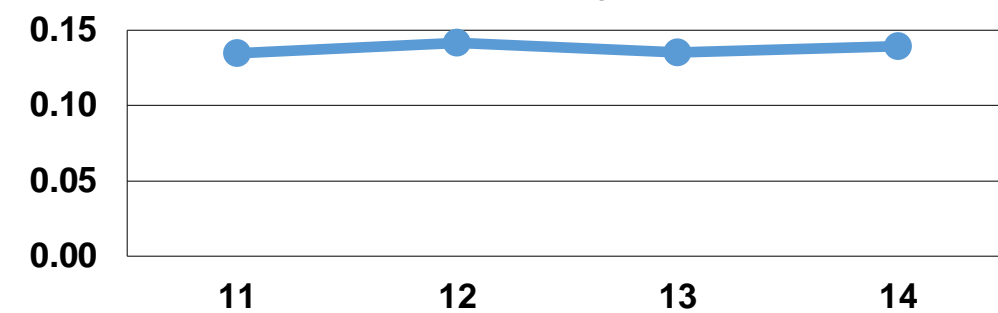
Service Effectiveness

Mode	Operating Expenses per Unlinked Passenger Trip	Unlinked Trips per Vehicle Revenue Mile	Unlinked Trips per Vehicle Revenue Hour
Bus	\$22.27	0.1	1.8
Total	\$22.27	0.1	1.8

Operating Expense per Vehicle Revenue Mile: Agency Total



Unlinked Passenger Trips per Vehicle Revenue Mile: Agency Total



Notes:

¹Demand Response - Taxi (DT) and non-dedicated fleets do not report fleet age data.