

Confederated Tribes and Bands of The Yakama Nation (CTABOTYN)

401 Fort Road
Toppenish, WA 98948

2014 Annual Agency Profile

Economic Development Director: Ms. Karen Cunningham
509-865-5121

General Information

Federally Recognized Tribal Statistical Areas

313 Yakama Nation Reservation and Off-Reservation Trust
Land, WA

Service Consumption

5,580 Annual Unlinked Trips (UPT)

Service Supplied

43,402 Annual Vehicle Revenue Miles (VRM)
1,918 Annual Vehicle Revenue Hours (VRH)

Database Information

NTDID: 00111

Reporter Type: Tribal Reporter

Financial Information

Sources of Operating Funds Expended

Fare Revenues	\$0	0.0%
Local Funds	\$0	0.0%
State Funds	\$0	0.0%
Federal Assistance	\$216,880	100.0%
Other Funds	\$0	0.0%

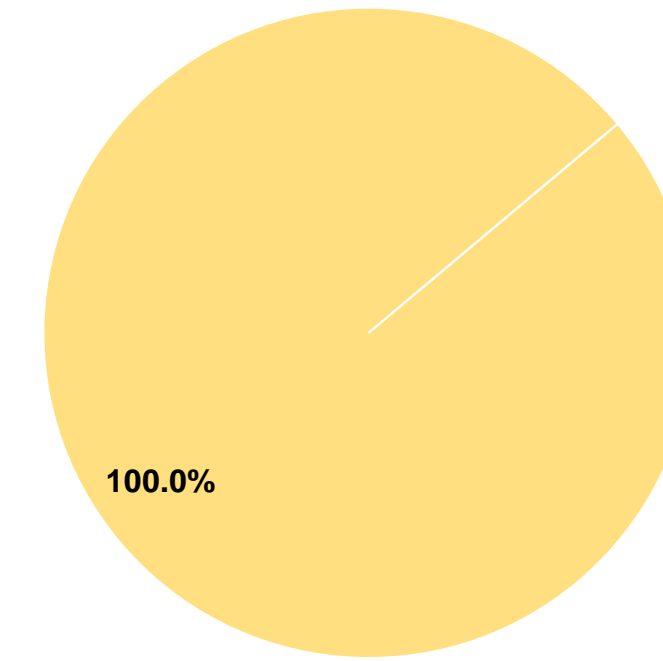
Total Operating Funds Expended \$216,880 100.0%

Sources of Capital Funds Expended

Fare Revenues	\$0
Local Funds	\$0
State Funds	\$0
Federal Assistance	\$0
Other Funds	\$0

Total Capital Funds Expended \$0

Operating Funding Sources



Modal Characteristics

Operation Characteristics

Vehicles Operated at Maximum Service

Mode	Directly Operated	Purchased Transportation	Operating Expenses	Fare Revenues	Uses of Capital Funds	Annual Unlinked Trips	Annual Vehicle Revenue Miles	Annual Vehicle Revenue Hours	Average Fleet Age in Years ¹
Demand Response	1	-	\$2,169	\$0	\$0	26	40	3	5.7
Bus	3	-	\$214,711	\$0	\$0	5,554	43,362	1,915	8.3
Total	4	-	\$216,880	\$0	\$0	5,580	43,402	1,918	

Performance Measures

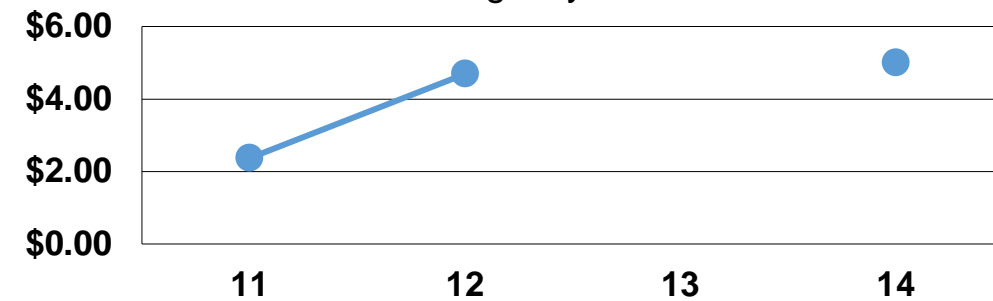
Service Efficiency

Mode	Operating Expenses per Vehicle Revenue Mile	Operating Expenses per Vehicle Revenue Hour
Demand Response	\$54.23	\$723.00
Bus	\$4.95	\$112.12
Total	\$5.00	\$113.08

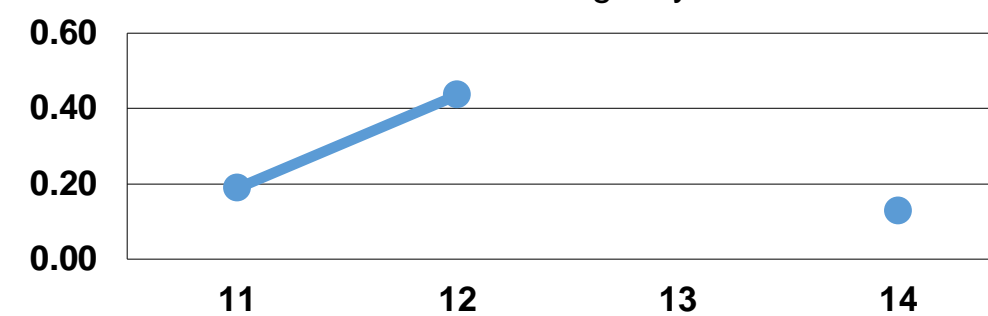
Service Effectiveness

Mode	Operating Expenses per Unlinked Passenger Trip	Unlinked Trips per Vehicle Revenue Mile	Unlinked Trips per Vehicle Revenue Hour
Demand Response	\$83.42	0.7	8.7
Bus	\$38.66	0.1	2.9
Total	\$38.87	0.1	2.9

Operating Expense per Vehicle Revenue Mile: Agency Total



Unlinked Passenger Trips per Vehicle Revenue Mile: Agency Total



Notes:

¹Demand Response - Taxi (DT) and non-dedicated fleets do not report fleet age data.