

# Fredericksburg Regional Transit (FRED)

2014 Annual Agency Profile

## General Information

### Urbanized Area (UZA) Statistics - 2010 Census

Fredericksburg, VA  
78 Square Miles  
141,238 Population  
231 Pop. Rank out of 498 UZAs

### Other UZAs Served

0 Virginia Non-UZA; 8 Washington, DC-VA-MD

### Service Area Statistics

242 Square Miles  
113,716 Population

### Service Consumption

495,501 Annual Unlinked Trips (UPT)

### Service Supplied

765,935 Annual Vehicle Revenue Miles (VRM)  
51,554 Annual Vehicle Revenue Hours (VRH)

### Database Information

NTDID: 30079

Reporter Type: Small Systems Reporter

## Financial Information

### Sources of Operating Funds Expended

Fare Revenues	\$423,081	11.3%
Local Funds	\$567,147	15.1%
State Funds	\$764,936	20.4%
Federal Assistance	\$1,846,518	49.1%
Other Funds	\$155,891	4.1%

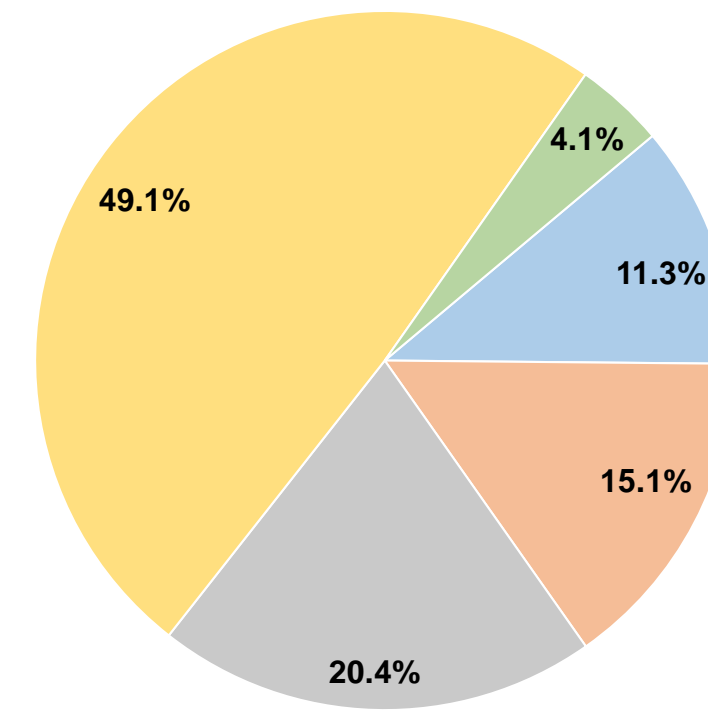
**Total Operating Funds Expended \$3,757,573 100.0%**

### Sources of Capital Funds Expended

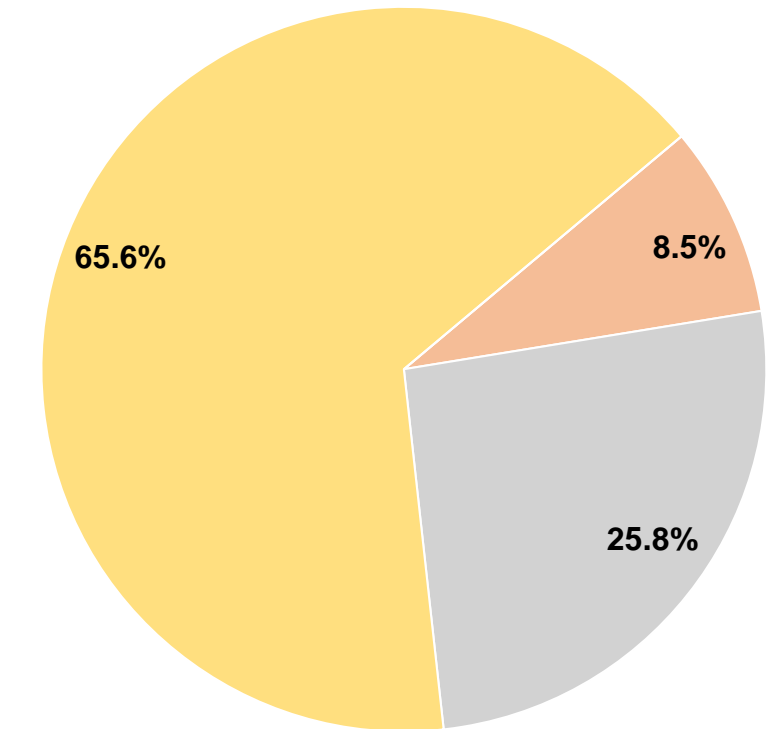
Fare Revenues	\$0	0.0%
Local Funds	\$227,240	8.5%
State Funds	\$687,350	25.8%
Federal Assistance	\$1,747,301	65.6%
Other Funds	\$0	0.0%

**Total Capital Funds Expended \$2,661,891 100.0%**

### Operating Funding Sources



### Capital Funding Sources



## Modal Characteristics

### Operation Characteristics

#### Vehicles Operated at Maximum Service

Mode	Directly Operated	Purchased Transportation	Operating Expenses	Fare Revenues	Uses of Capital Funds	Annual Unlinked Trips	Annual Vehicle Revenue Miles	Annual Vehicle Revenue Hours	Average Fleet Age in Years <sup>1</sup>
Bus	20	-	\$3,757,573	\$423,081	\$2,661,891	495,501	765,935	51,554	3.0
<b>Total</b>	<b>20</b>	<b>-</b>	<b>\$3,757,573</b>	<b>\$423,081</b>	<b>\$2,661,891</b>	<b>495,501</b>	<b>765,935</b>	<b>51,554</b>	

### Performance Measures

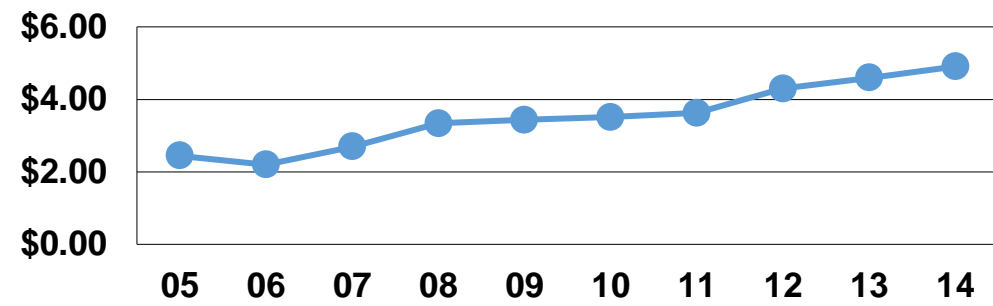
#### Service Efficiency

Mode	Operating Expenses per Vehicle Revenue Mile	Operating Expenses per Vehicle Revenue Hour
Bus	\$4.91	\$72.89
<b>Total</b>	<b>\$4.91</b>	<b>\$72.89</b>

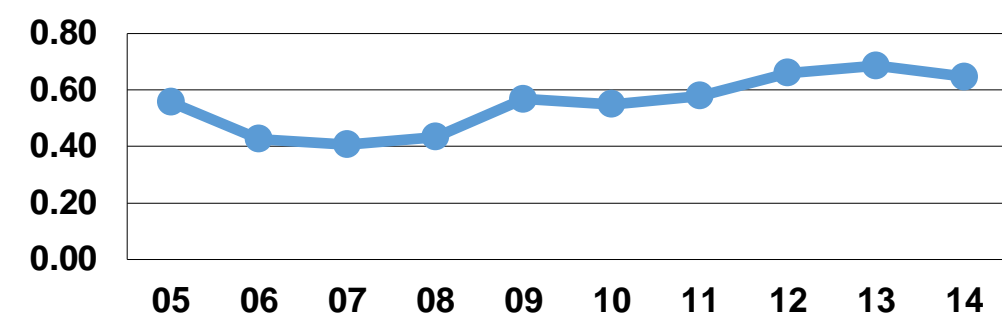
#### Service Effectiveness

Mode	Operating Expenses per Unlinked Passenger Trip	Unlinked Trips per Vehicle Revenue Mile	Unlinked Trips per Vehicle Revenue Hour
Bus	\$7.58	0.6	9.6
<b>Total</b>	<b>\$7.58</b>	<b>0.6</b>	<b>9.6</b>

Operating Expense per Vehicle Revenue Mile: Bus



Unlinked Passenger Trips per Vehicle Revenue Mile: Bus



**Notes:**

<sup>1</sup>Demand Response - Taxi (DT) and non-dedicated fleets do not report fleet age data.