

## General Information

### Urbanized Area (UZA) Statistics - 2010 Census

Florence, SC  
 71 Square Miles  
 89,557 Population  
 325 Pop. Rank out of 498 UZAs

### Other UZAs Served

0 South Carolina Non-UZA

### Service Area Statistics

3,534 Square Miles  
 346,357 Population

### Service Consumption

229,074 Annual Unlinked Trips (UPT)

### Service Supplied

505,075 Annual Vehicle Revenue Miles (VRM)  
 30,695 Annual Vehicle Revenue Hours (VRH)

### Database Information

NTDID: 40056

Reporter Type: Small Systems Reporter

## Financial Information

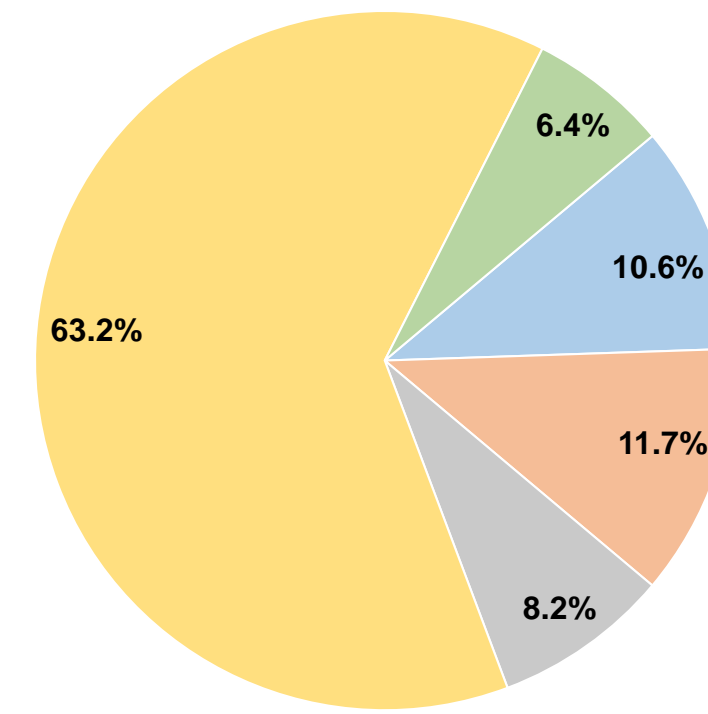
### Sources of Operating Funds Expended

Fare Revenues	\$313,942	10.6%
Local Funds	\$346,218	11.7%
State Funds	\$242,306	8.2%
Federal Assistance	\$1,875,317	63.2%
Other Funds	\$191,143	6.4%
<b>Total Operating Funds Expended</b>	<b>\$2,968,926</b>	<b>100.0%</b>

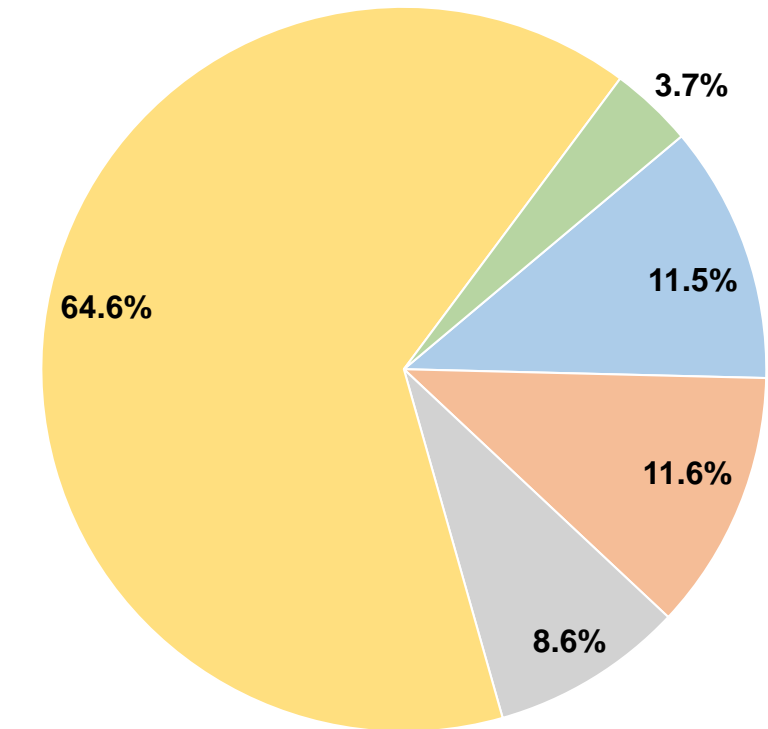
### Sources of Capital Funds Expended

Fare Revenues	\$46,810	11.5%
Local Funds	\$47,212	11.6%
State Funds	\$35,085	8.6%
Federal Assistance	\$262,873	64.6%
Other Funds	\$15,082	3.7%
<b>Total Capital Funds Expended</b>	<b>\$407,062</b>	<b>100.0%</b>

### Operating Funding Sources



### Capital Funding Sources



## Modal Characteristics

### Operation Characteristics

#### Vehicles Operated at Maximum Service

Mode	Directly Operated	Purchased Transportation	Operating Expenses	Fare Revenues	Uses of Capital Funds	Annual Unlinked Trips	Annual Vehicle Revenue Miles	Annual Vehicle Revenue Hours	Average Fleet Age in Years <sup>1</sup>
Demand Response	4	-	\$3,509	\$2,921	\$394	136	631	103	4.0
Bus	15	-	\$2,965,417	\$357,831	\$406,668	228,938	504,444	30,592	5.4
<b>Total</b>	<b>19</b>	<b>-</b>	<b>\$2,968,926</b>	<b>\$360,752</b>	<b>\$407,062</b>	<b>229,074</b>	<b>505,075</b>	<b>30,695</b>	

### Performance Measures

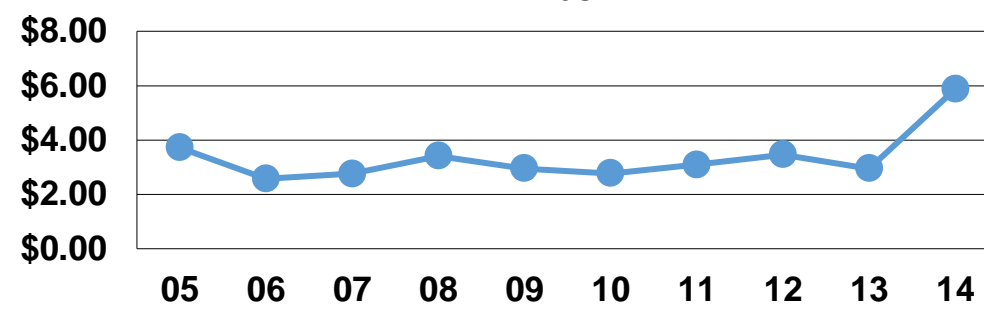
#### Service Efficiency

Mode	Operating Expenses per Vehicle Revenue Mile	Operating Expenses per Vehicle Revenue Hour
Demand Response	\$5.56	\$34.07
Bus	\$5.88	\$96.93
<b>Total</b>	<b>\$5.88</b>	<b>\$96.72</b>

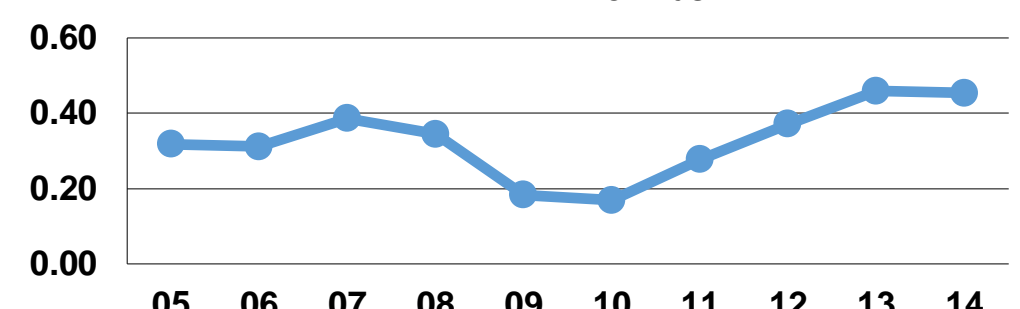
#### Service Effectiveness

Mode	Operating Expenses per Unlinked Passenger Trip	Unlinked Trips per Vehicle Revenue Mile	Unlinked Trips per Vehicle Revenue Hour
Demand Response	\$25.80	0.2	1.3
Bus	\$12.95	0.5	7.5
<b>Total</b>	<b>\$12.96</b>	<b>0.5</b>	<b>7.5</b>

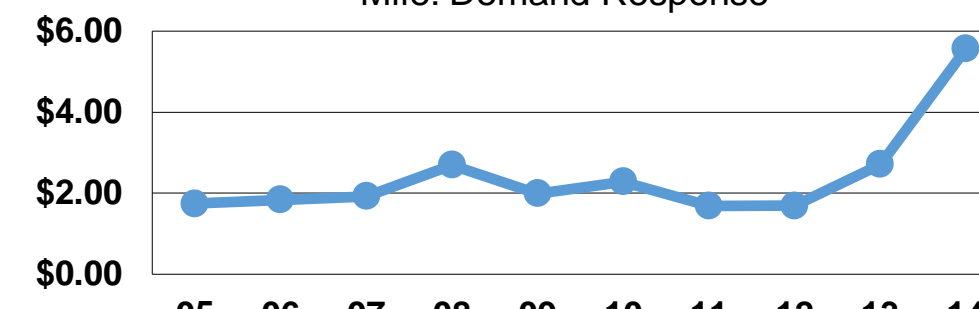
Operating Expense per Vehicle Revenue Mile: Bus



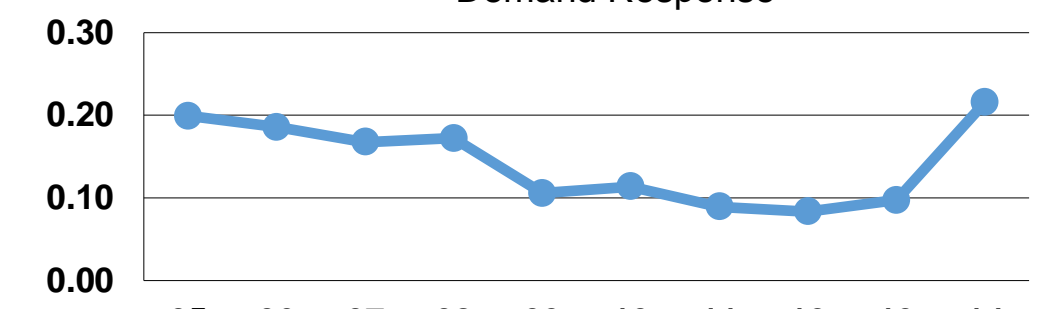
Unlinked Passenger Trips per Vehicle Revenue Mile: Bus



Unlinked Passenger Trips per Vehicle Revenue Mile: Demand Response



Operating Expense per Vehicle Revenue Mile: Demand Response



**Notes:**

<sup>1</sup>Demand Response - Taxi (DT) and non-dedicated fleets do not report fleet age data.