

General Information

Urbanized Area (UZA) Statistics - 2010 Census

Greensboro, NC
185 Square Miles
311,810 Population
120 Pop. Rank out of 498 UZAs

Other UZAs Served

202 High Point, NC; 0 North Carolina Non-UZA

Service Area Statistics

52 Square Miles
248,111 Population

Service Consumption

139,308 Annual Unlinked Trips (UPT)

Service Supplied

434,236 Annual Vehicle Revenue Miles (VRM)
23,190 Annual Vehicle Revenue Hours (VRH)

Database Information

NTDID: 40133

Reporter Type: Small Systems Reporter

Financial Information

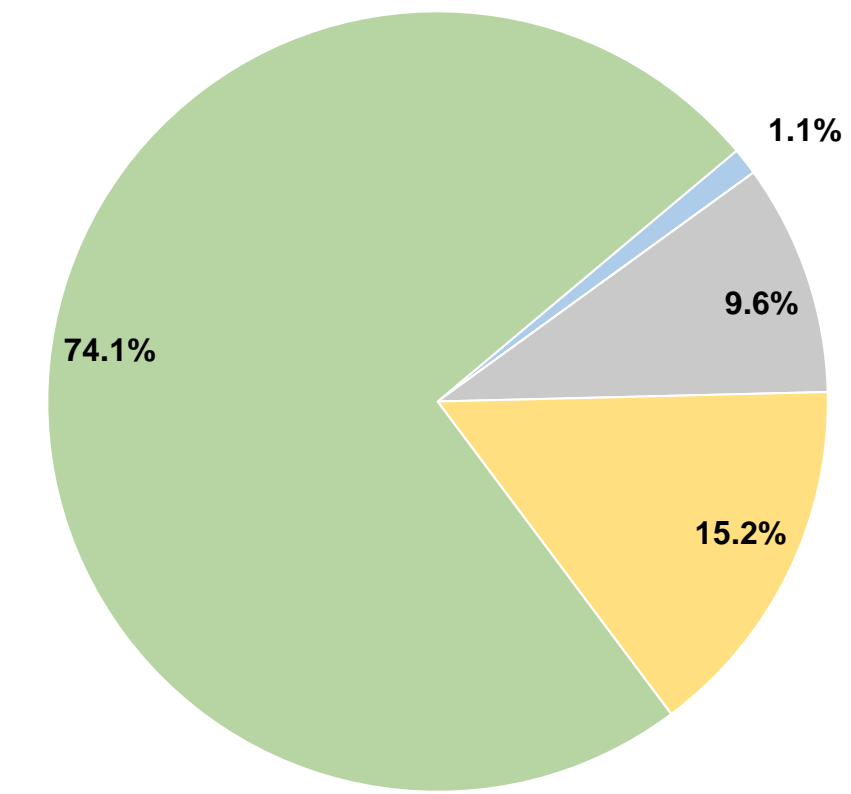
Sources of Operating Funds Expended

Fare Revenues	\$30,793	1.1%
Local Funds	\$0	0.0%
State Funds	\$261,981	9.6%
Federal Assistance	\$414,254	15.2%
Other Funds	\$2,023,344	74.1%
Total Operating Funds Expended	\$2,730,372	100.0%

Sources of Capital Funds Expended

Fare Revenues	\$0
Local Funds	\$0
State Funds	\$0
Federal Assistance	\$0
Other Funds	\$0
Total Capital Funds Expended	\$0

Operating Funding Sources



Modal Characteristics

Operation Characteristics

Vehicles Operated at Maximum Service

Mode	Directly Operated	Purchased Transportation	Operating Expenses	Fare Revenues	Uses of Capital Funds	Annual Unlinked Trips	Annual Vehicle Revenue Miles	Annual Vehicle Revenue Hours	Average Fleet Age in Years ¹
Demand Response	20	-	\$2,730,372	\$30,793	\$0	139,308	434,236	23,190	3.3
Total	20	-	\$2,730,372	\$30,793	\$0	139,308	434,236	23,190	

Performance Measures

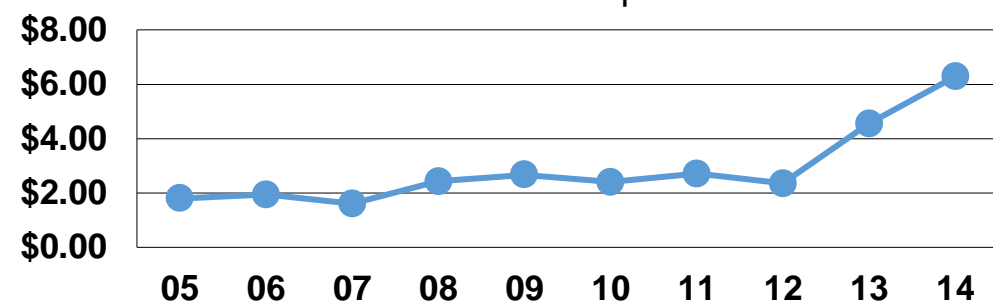
Service Efficiency

Mode	Operating Expenses per Vehicle Revenue Mile	Operating Expenses per Vehicle Revenue Hour
Demand Response	\$6.29	\$117.74
Total	\$6.29	\$117.74

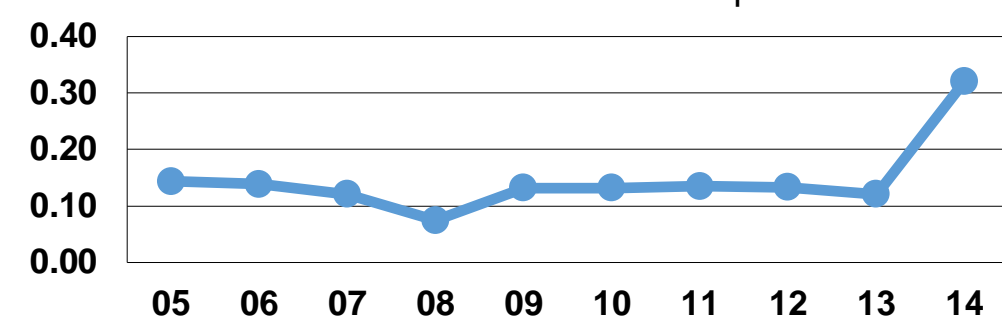
Service Effectiveness

Mode	Operating Expenses per Unlinked Passenger Trip	Unlinked Trips per Vehicle Revenue Mile	Unlinked Trips per Vehicle Revenue Hour
Demand Response	\$19.60	0.3	6.0
Total	\$19.60	0.3	6.0

Operating Expense per Vehicle Revenue Mile: Demand Response



Unlinked Passenger Trips per Vehicle Revenue Mile: Demand Response



Notes:

¹Demand Response - Taxi (DT) and non-dedicated fleets do not report fleet age data.