

### General Information

#### Urbanized Area (UZA) Statistics - 2010 Census

Atlanta, GA  
2,645 Square Miles  
4,515,419 Population  
9 Pop. Rank out of 498 UZAs

#### Other UZAs Served

0 Georgia Non-UZA

#### Service Area Statistics

324 Square Miles  
207,360 Population

#### Service Consumption

93,868 Annual Unlinked Trips (UPT)

#### Service Supplied

501,585 Annual Vehicle Revenue Miles (VRM)  
42,164 Annual Vehicle Revenue Hours (VRH)

#### Database Information

NTDID: 40181

Reporter Type: Small Systems Reporter

### Financial Information

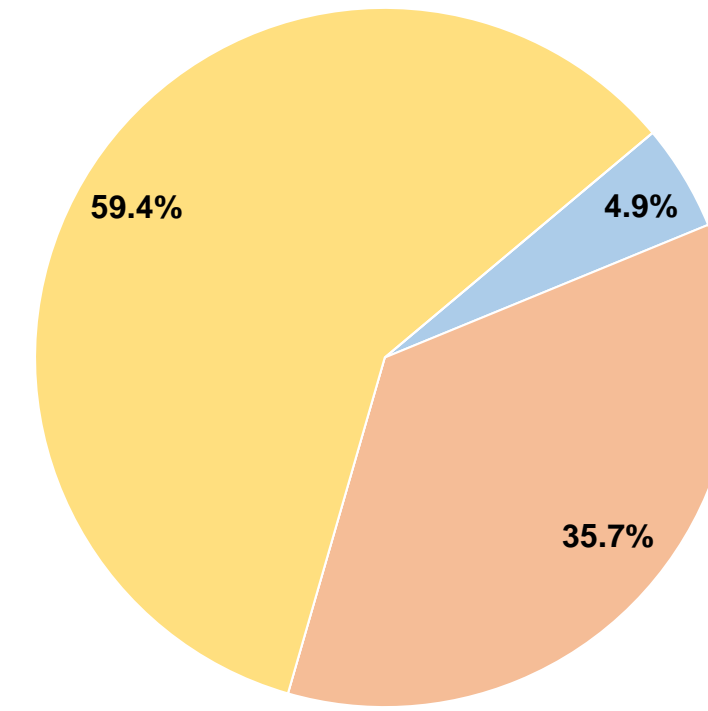
#### Sources of Operating Funds Expended

Fare Revenues	\$75,639	4.9%
Local Funds	\$549,012	35.7%
State Funds	\$0	0.0%
Federal Assistance	\$914,776	59.4%
Other Funds	\$0	0.0%
<b>Total Operating Funds Expended</b>	<b>\$1,539,427</b>	<b>100.0%</b>

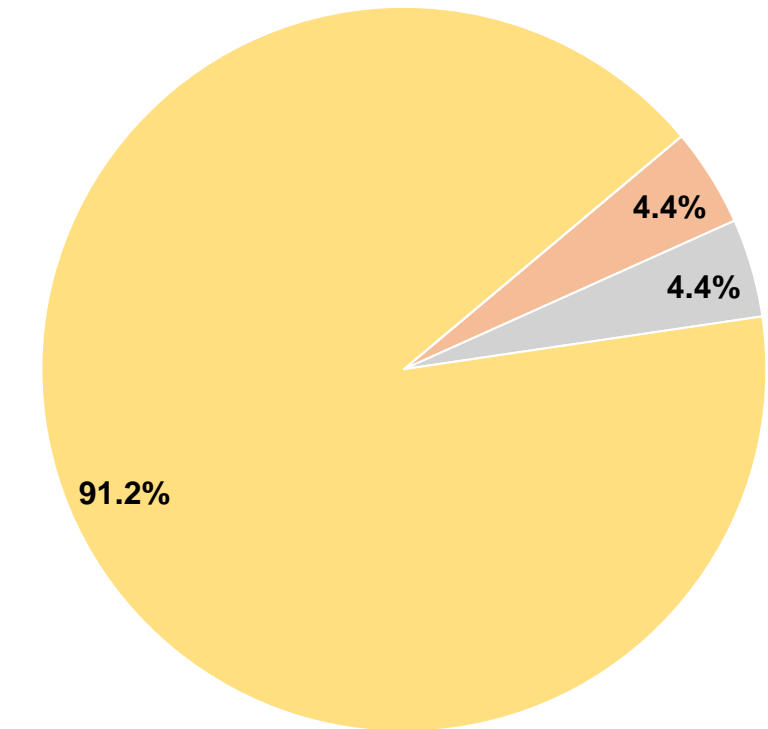
#### Sources of Capital Funds Expended

Fare Revenues	\$0	0.0%
Local Funds	\$16,170	4.4%
State Funds	\$16,170	4.4%
Federal Assistance	\$335,953	91.2%
Other Funds	\$0	0.0%
<b>Total Capital Funds Expended</b>	<b>\$368,293</b>	<b>100.0%</b>

#### Operating Funding Sources



#### Capital Funding Sources



### Modal Characteristics

#### Operation Characteristics

##### Vehicles Operated at Maximum Service

Mode	Directly Operated	Purchased Transportation	Operating Expenses	Fare Revenues	Uses of Capital Funds	Annual Unlinked Trips	Annual Vehicle Revenue Miles	Annual Vehicle Revenue Hours	Average Fleet Age in Years <sup>1</sup>
Demand Response	21	-	\$1,539,427	\$75,639	\$368,293	93,868	501,585	42,164	3.1
<b>Total</b>	<b>21</b>	<b>-</b>	<b>\$1,539,427</b>	<b>\$75,639</b>	<b>\$368,293</b>	<b>93,868</b>	<b>501,585</b>	<b>42,164</b>	

#### Performance Measures

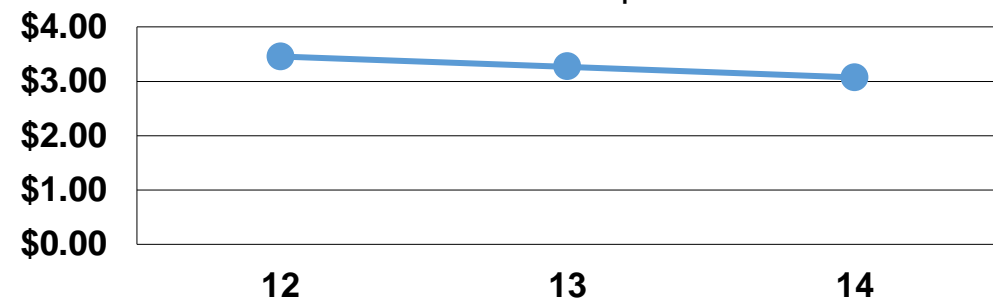
##### Service Efficiency

Mode	Operating Expenses per Vehicle Revenue Mile	Operating Expenses per Vehicle Revenue Hour
Demand Response	\$3.07	\$36.51
<b>Total</b>	<b>\$3.07</b>	<b>\$36.51</b>

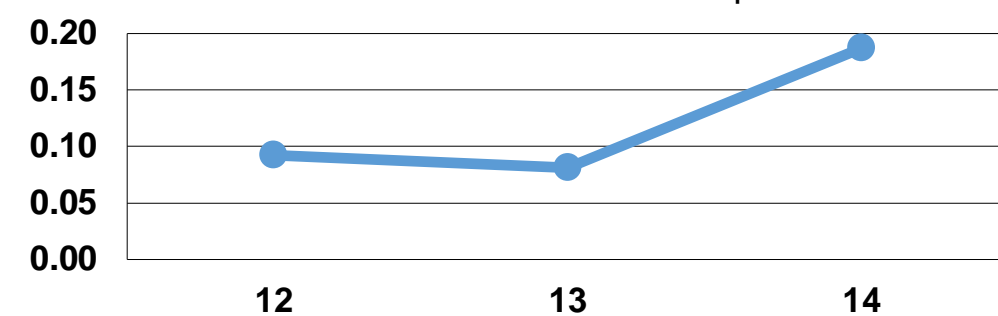
##### Service Effectiveness

Mode	Operating Expenses per Unlinked Passenger Trip	Unlinked Trips per Vehicle Revenue Mile	Unlinked Trips per Vehicle Revenue Hour
Demand Response	\$16.40	0.2	2.2
<b>Total</b>	<b>\$16.40</b>	<b>0.2</b>	<b>2.2</b>

Operating Expense per Vehicle Revenue Mile: Demand Response



Unlinked Passenger Trips per Vehicle Revenue Mile: Demand Response



**Notes:**

<sup>1</sup>Demand Response - Taxi (DT) and non-dedicated fleets do not report fleet age data.