

General Information

Urbanized Area (UZA) Statistics - 2010 Census

Bowling Green, KY
45 Square Miles
78,306 Population
364 Pop. Rank out of 498 UZAs

Service Area Statistics

15 Square Miles
50,000 Population

Service Consumption

117,082 Annual Unlinked Trips (UPT)

Service Supplied

234,182 Annual Vehicle Revenue Miles (VRM)
19,997 Annual Vehicle Revenue Hours (VRH)

Database Information

NTDID: 40184

Reporter Type: Small Systems Reporter

Financial Information

Sources of Operating Funds Expended

Fare Revenues	\$88,136	7.8%
Local Funds	\$243,399	21.6%
State Funds	\$47,588	4.2%
Federal Assistance	\$745,291	66.3%
Other Funds	\$0	0.0%

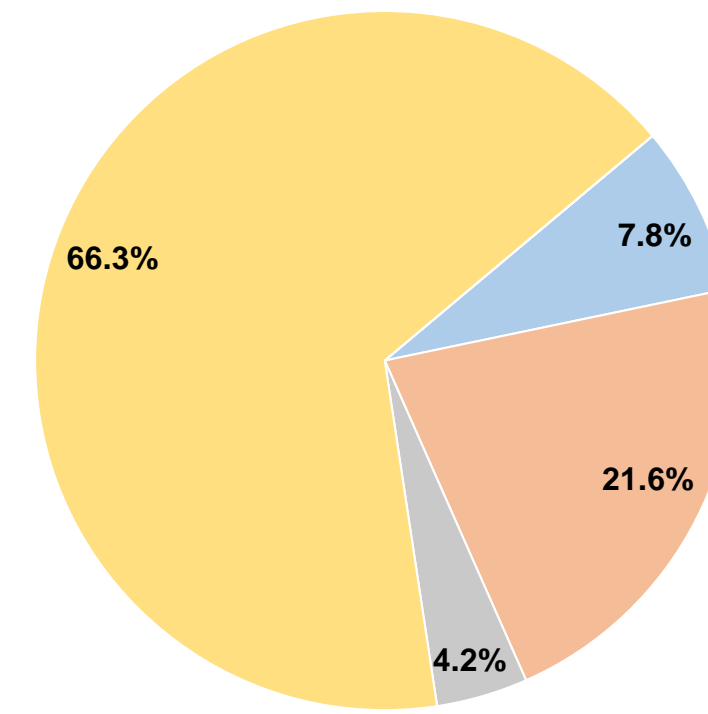
Total Operating Funds Expended \$1,124,414 100.0%

Sources of Capital Funds Expended

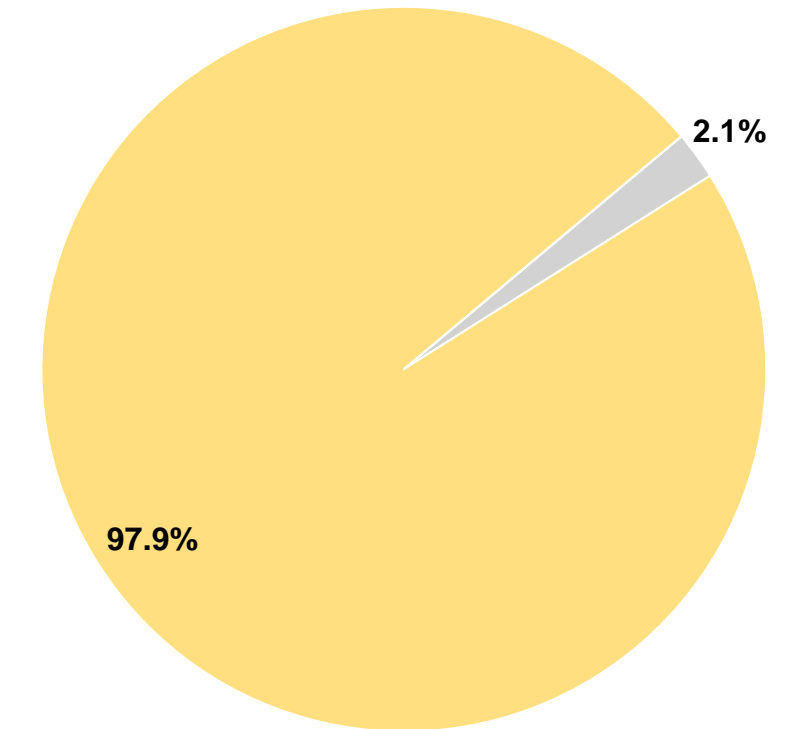
Fare Revenues	\$0	0.0%
Local Funds	\$0	0.0%
State Funds	\$486	2.1%
Federal Assistance	\$22,186	97.9%
Other Funds	\$0	0.0%

Total Capital Funds Expended \$22,672 100.0%

Operating Funding Sources



Capital Funding Sources



Modal Characteristics

Operation Characteristics

Vehicles Operated at Maximum Service

Mode	Directly Operated	Purchased Transportation	Operating Expenses	Fare Revenues	Uses of Capital Funds	Annual Unlinked Trips	Annual Vehicle Revenue Miles	Annual Vehicle Revenue Hours	Average Fleet Age in Years ¹
Demand Response	12	-	\$208,953	\$33,172	\$0	11,059	52,360	5,687	10.4
Bus	6	-	\$915,461	\$54,964	\$22,672	106,023	181,822	14,310	7.6
Total	18	-	\$1,124,414	\$88,136	\$22,672	117,082	234,182	19,997	

Performance Measures

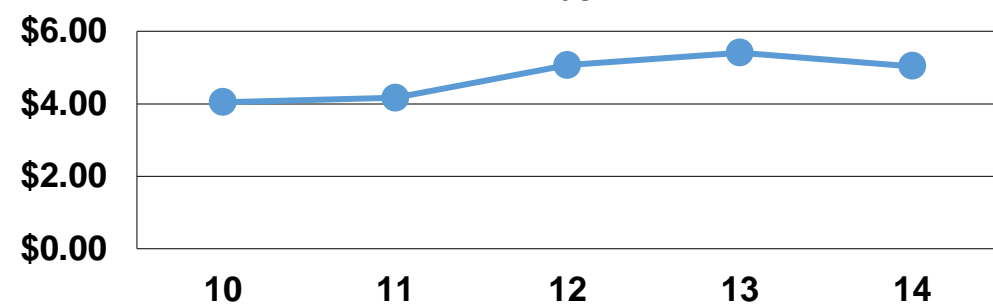
Service Efficiency

Mode	Operating Expenses per Vehicle Revenue Mile	Operating Expenses per Vehicle Revenue Hour
Demand Response	\$3.99	\$36.74
Bus	\$5.03	\$63.97
Total	\$4.80	\$56.23

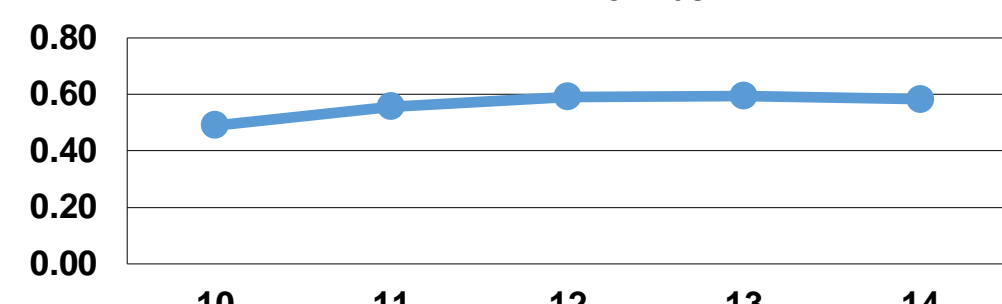
Service Effectiveness

Mode	Operating Expenses per Unlinked Passenger Trip	Unlinked Trips per Vehicle Revenue Mile	Unlinked Trips per Vehicle Revenue Hour
Demand Response	\$18.89	0.2	1.9
Bus	\$8.63	0.6	7.4
Total	\$9.60	0.5	5.9

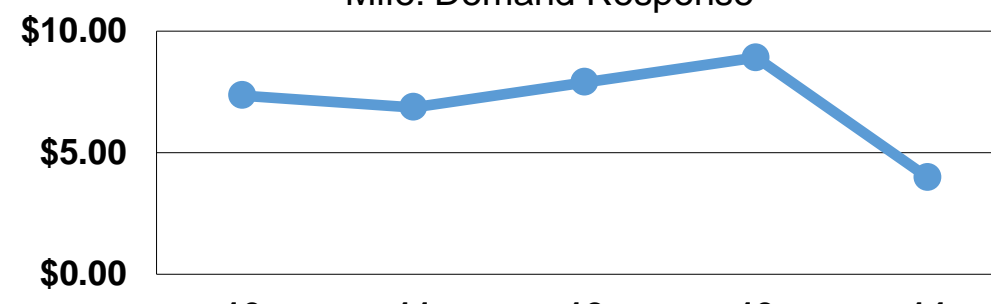
Operating Expense per Vehicle Revenue Mile: Bus



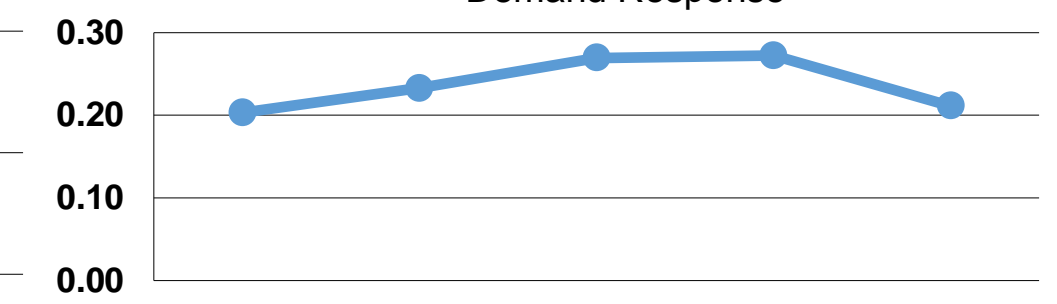
Unlinked Passenger Trips per Vehicle Revenue Mile: Bus



Unlinked Passenger Trips per Vehicle Revenue Mile: Demand Response



Operating Expense per Vehicle Revenue Mile: Demand Response



Notes:

¹Demand Response - Taxi (DT) and non-dedicated fleets do not report fleet age data.