

General Information

Federally Recognized Tribal Statistical Areas

163 Mississippi Choctaw Reservation, MS

Service Consumption

66,285 Annual Unlinked Trips (UPT)

Service Supplied

912,160 Annual Vehicle Revenue Miles (VRM)

29,934 Annual Vehicle Revenue Hours (VRH)

Database Information

NTDID: 44925

Reporter Type: Tribal Reporter

Financial Information

Sources of Operating Funds Expended

Fare Revenues	\$23,002	0.7%
Local Funds	\$953,707	28.9%
State Funds	\$0	0.0%
Federal Assistance	\$2,223,613	67.3%
Other Funds	\$102,344	3.1%

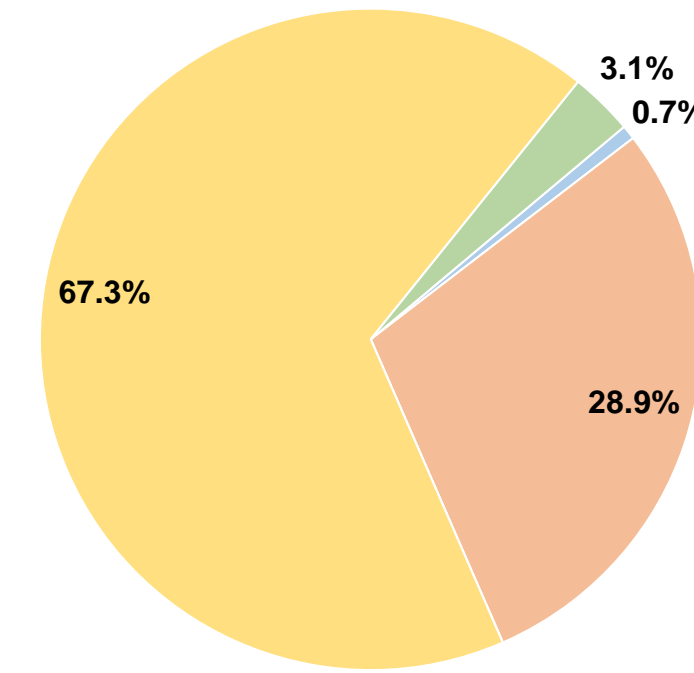
Total Operating Funds Expended \$3,302,666 100.0%

Sources of Capital Funds Expended

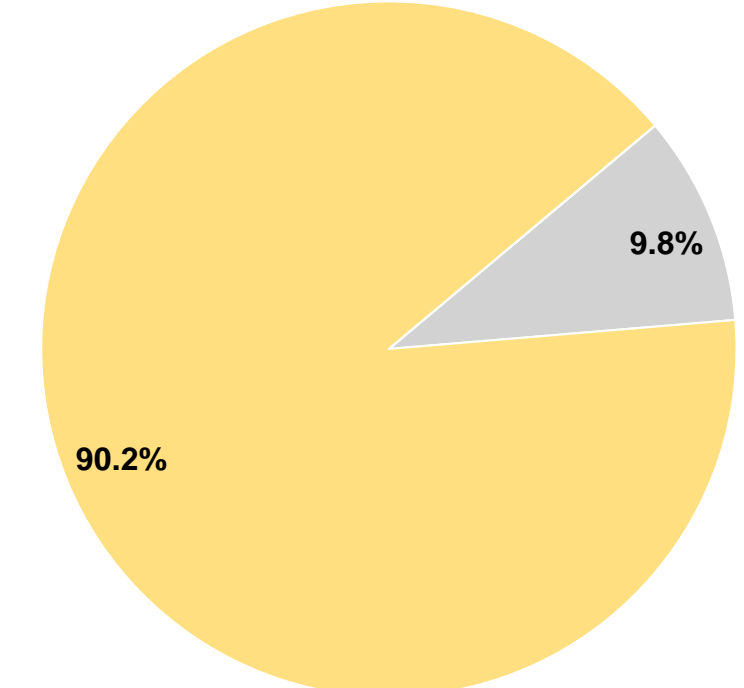
Fare Revenues	\$0	0.0%
Local Funds	\$0	0.0%
State Funds	\$111,118	9.8%
Federal Assistance	\$1,025,119	90.2%
Other Funds	\$0	0.0%

Total Capital Funds Expended \$1,136,237 100.0%

Operating Funding Sources



Capital Funding Sources



Modal Characteristics

Operation Characteristics

Vehicles Operated at Maximum Service

Mode	Directly Operated	Purchased Transportation	Operating Expenses	Fare Revenues	Uses of Capital Funds	Annual Unlinked Trips	Annual Vehicle Revenue Miles	Annual Vehicle Revenue Hours	Average Fleet Age in Years ¹
Demand Response	25	-	\$3,302,666	\$23,002	\$1,136,237	66,285	912,160	29,934	3.2
Total	25	-	\$3,302,666	\$23,002	\$1,136,237	66,285	912,160	29,934	

Performance Measures

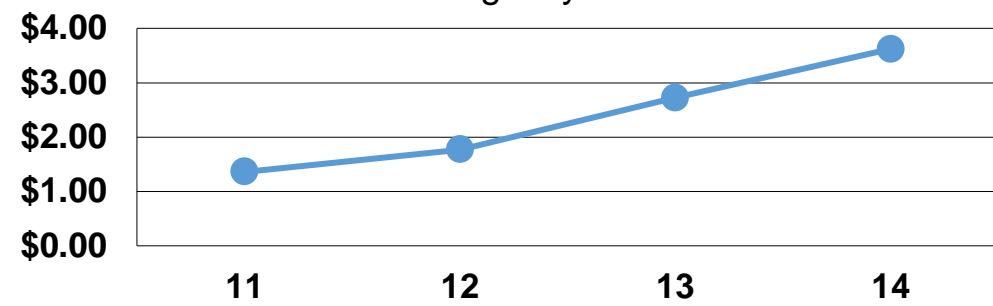
Service Efficiency

Mode	Operating Expenses per Vehicle Revenue Mile	Operating Expenses per Vehicle Revenue Hour
Demand Response	\$3.62	\$110.33
Total	\$3.62	\$110.33

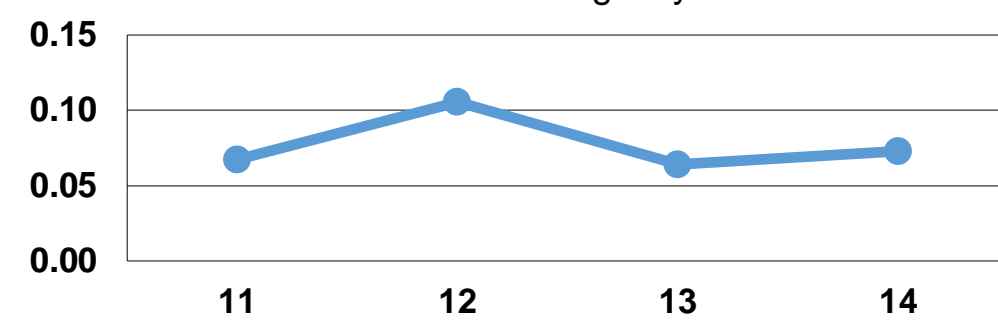
Service Effectiveness

Mode	Operating Expenses per Unlinked Passenger Trip	Unlinked Trips per Vehicle Revenue Mile	Unlinked Trips per Vehicle Revenue Hour
Demand Response	\$49.83	0.1	2.2
Total	\$49.83	0.1	2.2

Operating Expense per Vehicle Revenue Mile: Agency Total



Unlinked Passenger Trips per Vehicle Revenue Mile: Agency Total



Notes:

¹Demand Response - Taxi (DT) and non-dedicated fleets do not report fleet age data.