

General Information

Urbanized Area (UZA) Statistics - 2010 Census

La Crosse, WI-MN
51 Square Miles
100,868 Population
298 Pop. Rank out of 498 UZAs

Service Area Statistics

20 Square Miles
32,510 Population

Service Consumption

76,725 Annual Unlinked Trips (UPT)

Service Supplied

519,096 Annual Vehicle Revenue Miles (VRM)
31,606 Annual Vehicle Revenue Hours (VRH)

Database Information

NTDID: 50152

Reporter Type: Small Systems Reporter

Financial Information

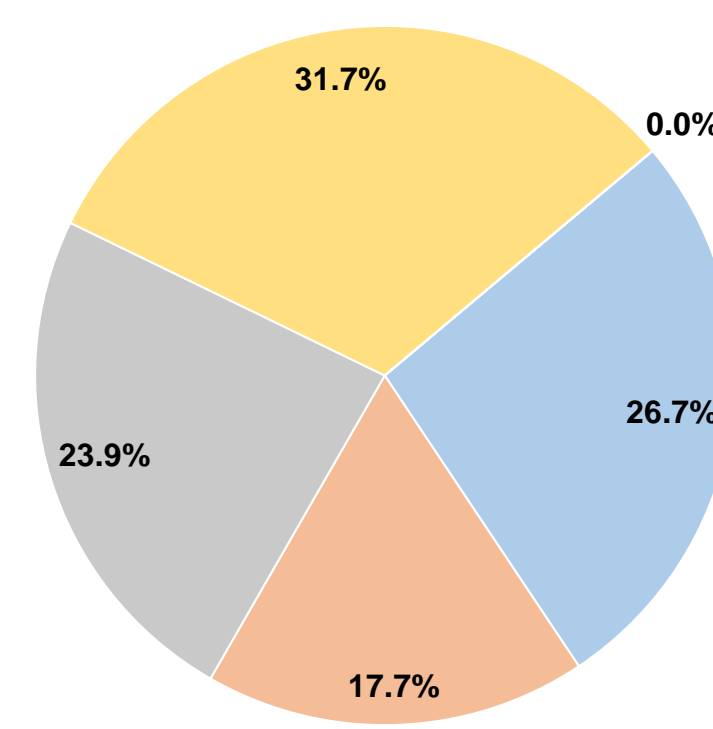
Sources of Operating Funds Expended

Fare Revenues	\$228,644	26.7%
Local Funds	\$151,153	17.7%
State Funds	\$204,274	23.9%
Federal Assistance	\$270,971	31.7%
Other Funds	\$31	0.0%
Total Operating Funds Expended	\$855,073	100.0%

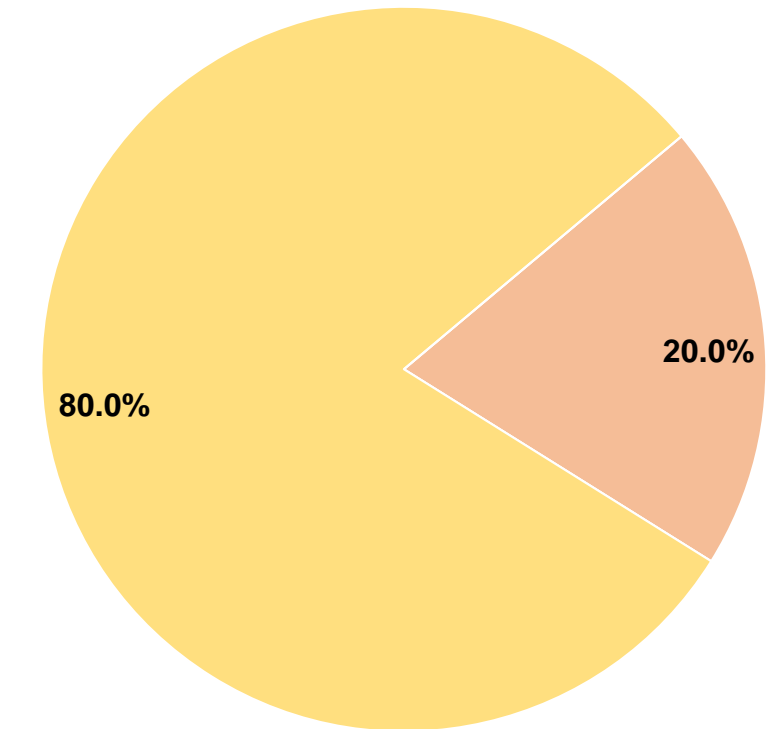
Sources of Capital Funds Expended

Fare Revenues	\$0	0.0%
Local Funds	\$17,538	20.0%
State Funds	\$0	0.0%
Federal Assistance	\$70,152	80.0%
Other Funds	\$0	0.0%
Total Capital Funds Expended	\$87,690	100.0%

Operating Funding Sources



Capital Funding Sources



Modal Characteristics

Operation Characteristics

Vehicles Operated at Maximum Service

Mode	Directly Operated	Purchased Transportation	Operating Expenses	Fare Revenues	Uses of Capital Funds	Annual Unlinked Trips	Annual Vehicle Revenue Miles	Annual Vehicle Revenue Hours	Average Fleet Age in Years ¹
Demand Response	-	9	\$855,073	\$228,644	\$87,690	76,725	519,096	31,606	3.1
Total	-	9	\$855,073	\$228,644	\$87,690	76,725	519,096	31,606	

Performance Measures

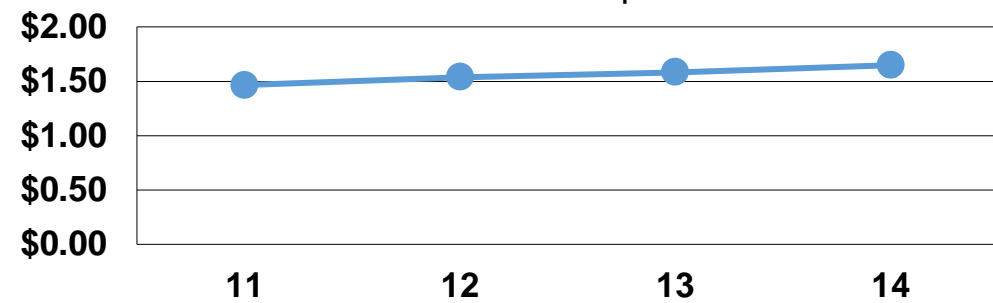
Service Efficiency

Mode	Operating Expenses per Vehicle Revenue Mile	Operating Expenses per Vehicle Revenue Hour
Demand Response	\$1.65	\$27.05
Total	\$1.65	\$27.05

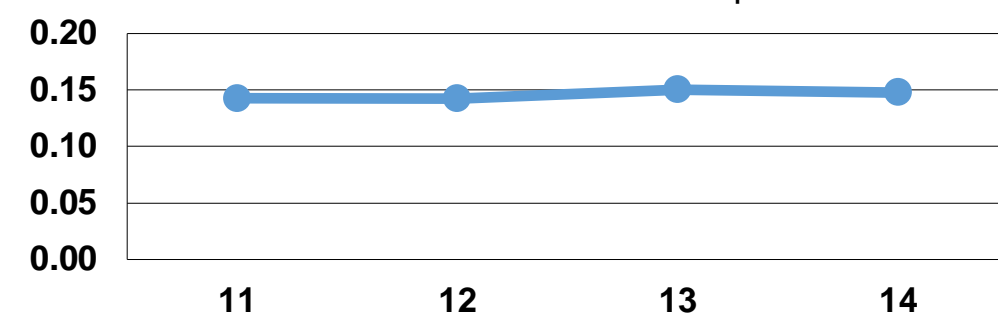
Service Effectiveness

Mode	Operating Expenses per Unlinked Passenger Trip	Unlinked Trips per Vehicle Revenue Mile	Unlinked Trips per Vehicle Revenue Hour
Demand Response	\$11.14	0.1	2.4
Total	\$11.14	0.1	2.4

Operating Expense per Vehicle Revenue Mile: Demand Response



Unlinked Passenger Trips per Vehicle Revenue Mile: Demand Response



Notes:

¹Demand Response - Taxi (DT) and non-dedicated fleets do not report fleet age data.