

General Information

Urbanized Area (UZA) Statistics - 2010 Census

Danville, IL-IN
30 Square Miles
50,996 Population
492 Pop. Rank out of 498 UZAs

Other UZAs Served

224 Champaign, IL

Service Area Statistics

30 Square Miles
50,996 Population

Service Consumption

632,170 Annual Unlinked Trips (UPT)

Service Supplied

627,340 Annual Vehicle Revenue Miles (VRM)
29,603 Annual Vehicle Revenue Hours (VRH)

Database Information

NTDID: 50174

Reporter Type: Small Systems Reporter

Financial Information

Sources of Operating Funds Expended

Fare Revenues	\$346,791	12.5%
Local Funds	\$35,625	1.3%
State Funds	\$1,802,887	65.0%
Federal Assistance	\$566,763	20.4%
Other Funds	\$22,086	0.8%

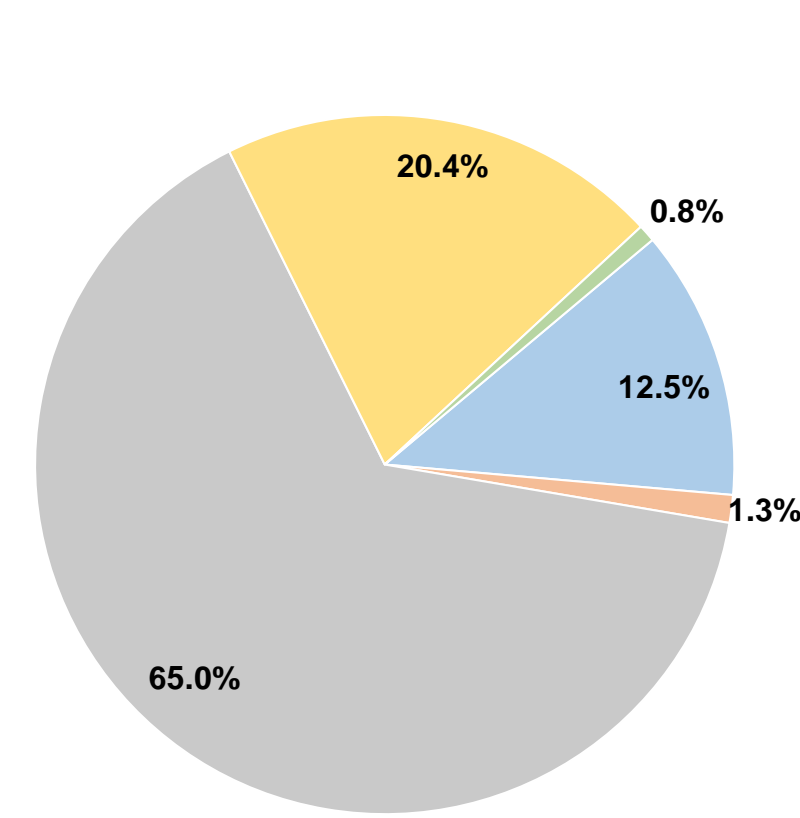
Total Operating Funds Expended \$2,774,152 100.0%

Sources of Capital Funds Expended

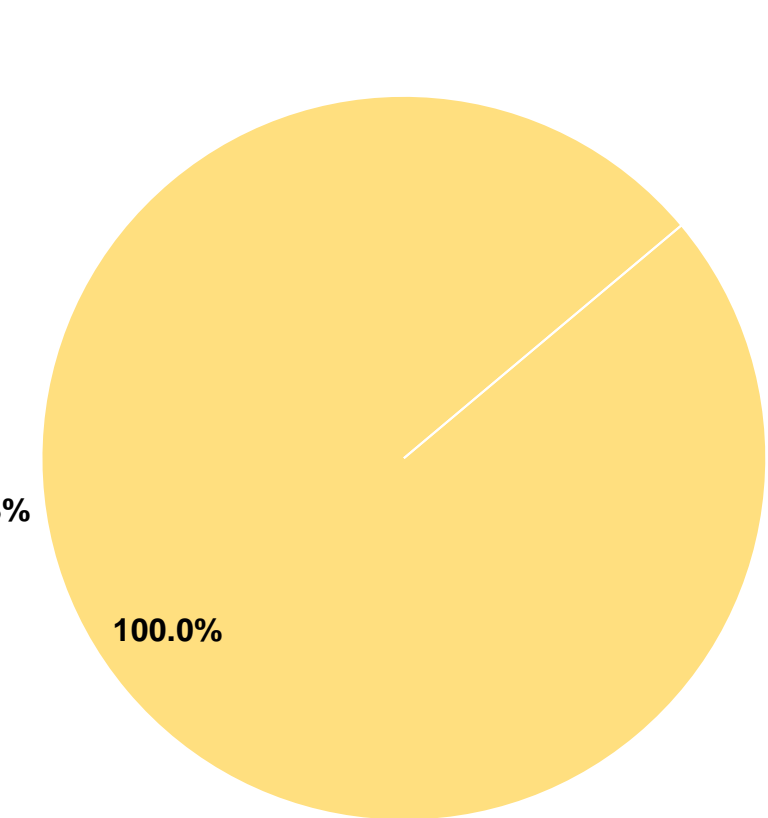
Fare Revenues	\$0	0.0%
Local Funds	\$0	0.0%
State Funds	\$0	0.0%
Federal Assistance	\$396,855	100.0%
Other Funds	\$0	0.0%

Total Capital Funds Expended \$396,855 100.0%

Operating Funding Sources



Capital Funding Sources



Modal Characteristics

Operation Characteristics

Vehicles Operated at Maximum Service

Mode	Directly Operated	Purchased Transportation	Operating Expenses	Fare Revenues	Uses of Capital Funds	Annual Unlinked Trips	Annual Vehicle Revenue Miles	Annual Vehicle Revenue Hours	Average Fleet Age in Years ¹
Demand Response	-	2	\$171,012	\$30,140	\$0	12,646	48,612	3,212	
Bus	11	-	\$2,603,140	\$316,651	\$396,855	619,524	578,728	26,391	8.3
Total	11	2	\$2,774,152	\$346,791	\$396,855	632,170	627,340	29,603	

Performance Measures

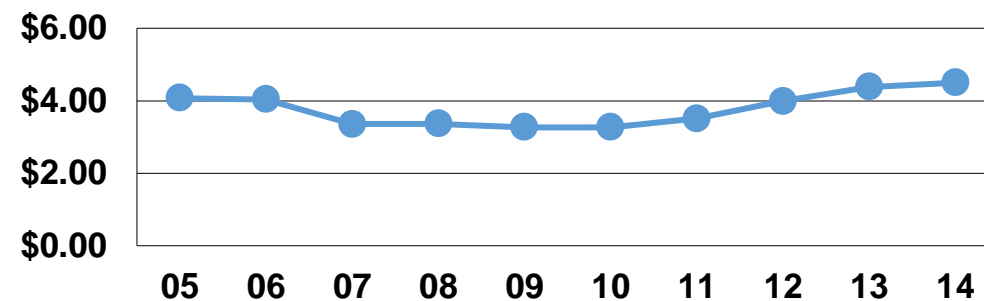
Service Efficiency

Mode	Operating Expenses per Vehicle Revenue Mile	Operating Expenses per Vehicle Revenue Hour
Demand Response	\$3.52	\$53.24
Bus	\$4.50	\$98.64
Total	\$4.42	\$93.71

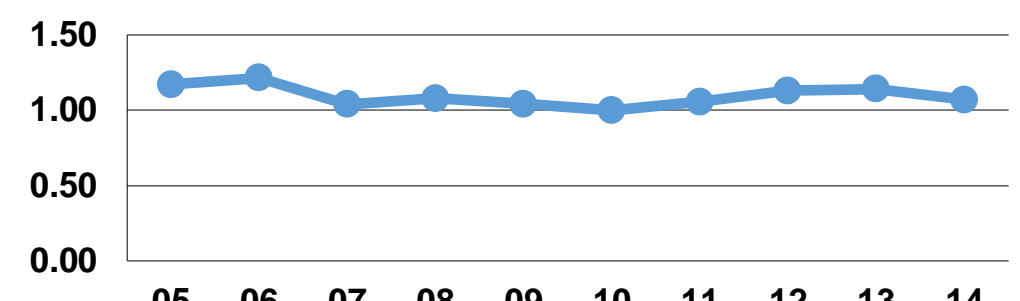
Service Effectiveness

Mode	Operating Expenses per Unlinked Passenger Trip	Unlinked Trips per Vehicle Revenue Mile	Unlinked Trips per Vehicle Revenue Hour
Demand Response	\$13.52	0.3	3.9
Bus	\$4.20	1.1	23.5
Total	\$4.39	1.0	21.4

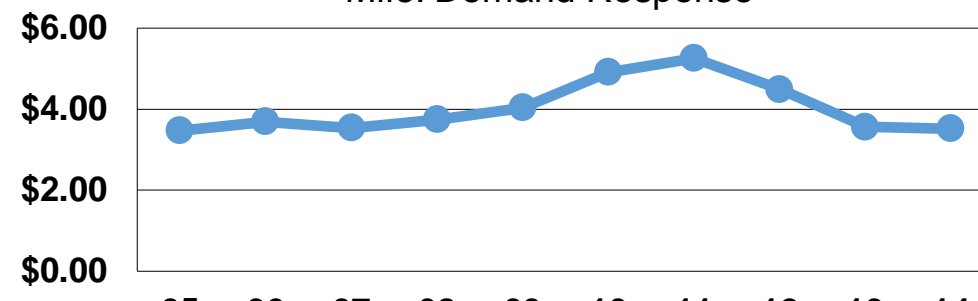
Operating Expense per Vehicle Revenue Mile: Bus



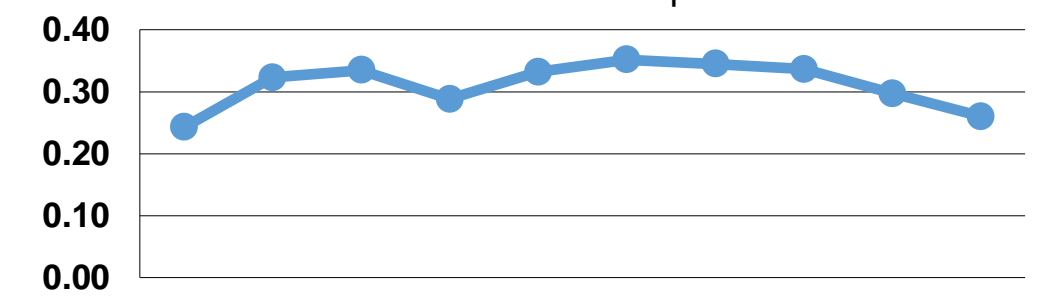
Unlinked Passenger Trips per Vehicle Revenue Mile: Bus



Unlinked Passenger Trips per Vehicle Revenue Mile: Demand Response



Operating Expense per Vehicle Revenue Mile: Demand Response



Notes:

¹Demand Response - Taxi (DT) and non-dedicated fleets do not report fleet age data.