

Red Lake Band of the Chippewa (RLT)

2014 Annual Agency Profile

24415 Highway 1 West
Red Lake, MN 56671

Director: Mr. Michael Ness
218-679-2910

General Information

Federally Recognized Tribal Statistical Areas

217 Red Lake Reservation, MN

Service Consumption

40,888 Annual Unlinked Trips (UPT)

Service Supplied

237,259 Annual Vehicle Revenue Miles (VRM)

9,869 Annual Vehicle Revenue Hours (VRH)

Database Information

NTDID: 55234

Reporter Type: Tribal Reporter

Financial Information

Sources of Operating Funds Expended

Fare Revenues	\$24,452	3.4%
Local Funds	\$109,989	15.3%
State Funds	\$0	0.0%
Federal Assistance	\$580,091	80.9%
Other Funds	\$2,203	0.3%

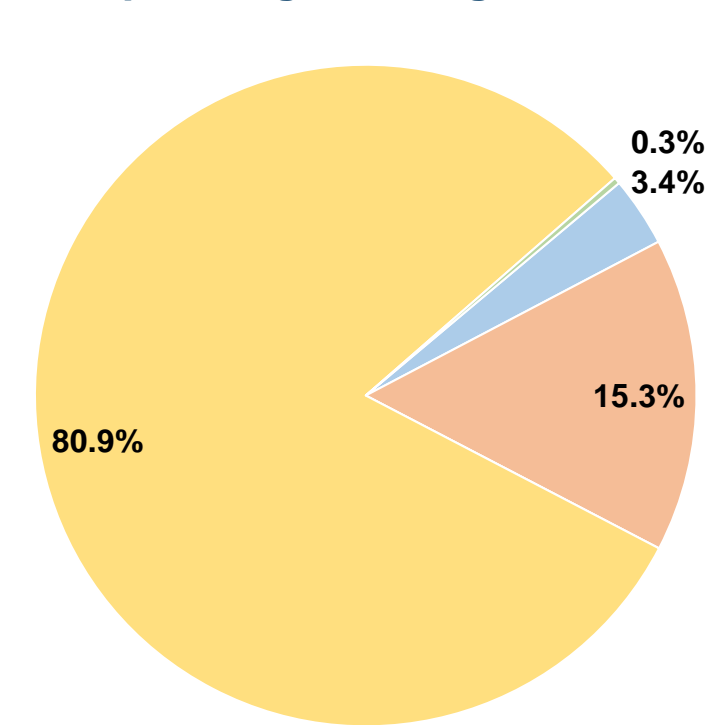
Total Operating Funds Expended \$716,735 100.0%

Sources of Capital Funds Expended

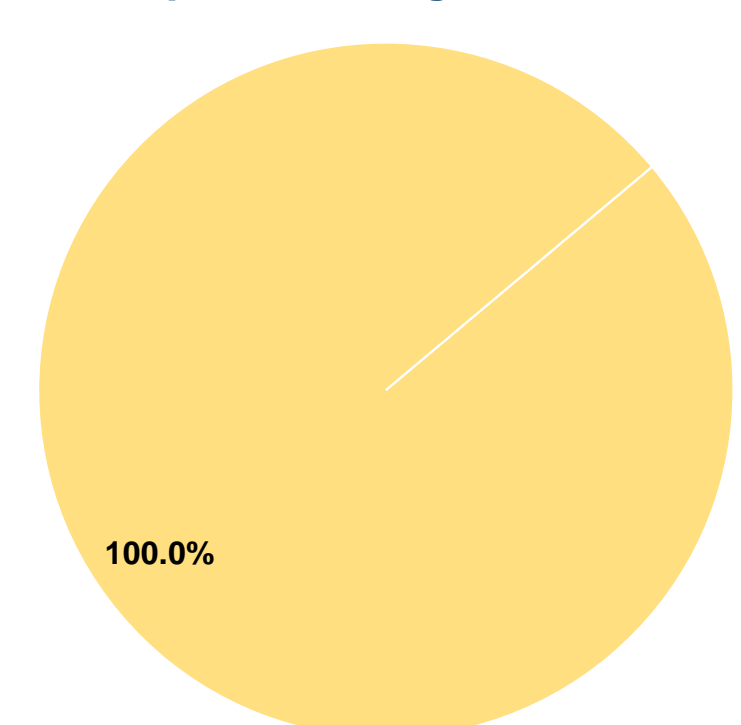
Fare Revenues	\$0	0.0%
Local Funds	\$0	0.0%
State Funds	\$0	0.0%
Federal Assistance	\$140,770	100.0%
Other Funds	\$0	0.0%

Total Capital Funds Expended \$140,770 100.0%

Operating Funding Sources



Capital Funding Sources



Modal Characteristics

Operation Characteristics

Vehicles Operated at Maximum Service

Mode	Directly Operated	Purchased Transportation	Operating Expenses	Fare Revenues	Uses of Capital Funds	Annual Unlinked Trips	Annual Vehicle Revenue Miles	Annual Vehicle Revenue Hours	Average Fleet Age in Years ¹
Demand Response	6	-	\$716,735	\$24,452	\$140,770	40,888	237,259	9,869	5.2
Total	6	-	\$716,735	\$24,452	\$140,770	40,888	237,259	9,869	

Performance Measures

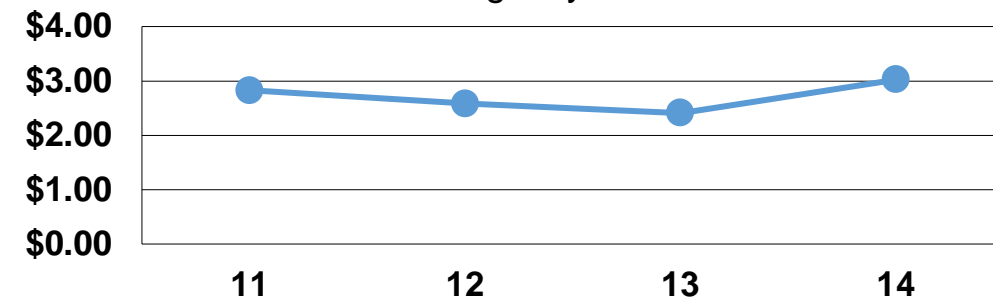
Service Efficiency

Mode	Operating Expenses per Vehicle Revenue Mile	Operating Expenses per Vehicle Revenue Hour
Demand Response	\$3.02	\$72.62
Total	\$3.02	\$72.62

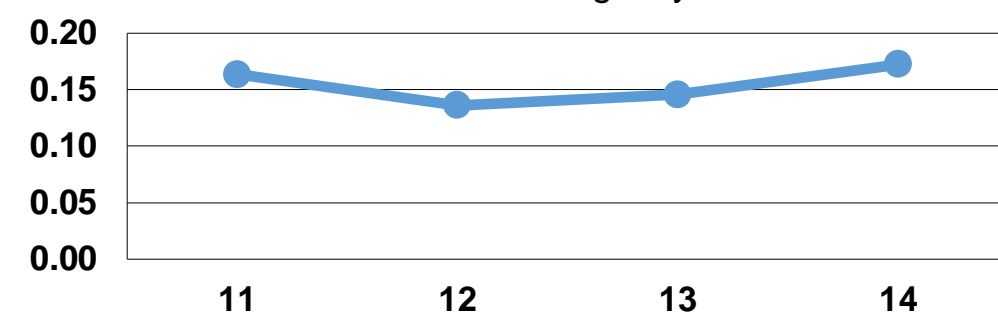
Service Effectiveness

Mode	Operating Expenses per Unlinked Passenger Trip	Unlinked Trips per Vehicle Revenue Mile	Unlinked Trips per Vehicle Revenue Hour
Demand Response	\$17.53	0.2	4.1
Total	\$17.53	0.2	4.1

Operating Expense per Vehicle Revenue Mile: Agency Total



Unlinked Passenger Trips per Vehicle Revenue Mile: Agency Total



Notes:

¹Demand Response - Taxi (DT) and non-dedicated fleets do not report fleet age data.