

General Information

Urbanized Area (UZA) Statistics - 2010 Census

Dallas-Fort Worth-Arlington, TX
 1,779 Square Miles
 5,121,892 Population
 6 Pop. Rank out of 498 UZAs

Service Area Statistics

80 Square Miles
 175,396 Population

Service Consumption

42,292 Annual Unlinked Trips (UPT)

Service Supplied

129,990 Annual Vehicle Revenue Miles (VRM)
 10,334 Annual Vehicle Revenue Hours (VRH)

Database Information

NTDID: 60068

Reporter Type: Small Systems Reporter

Financial Information

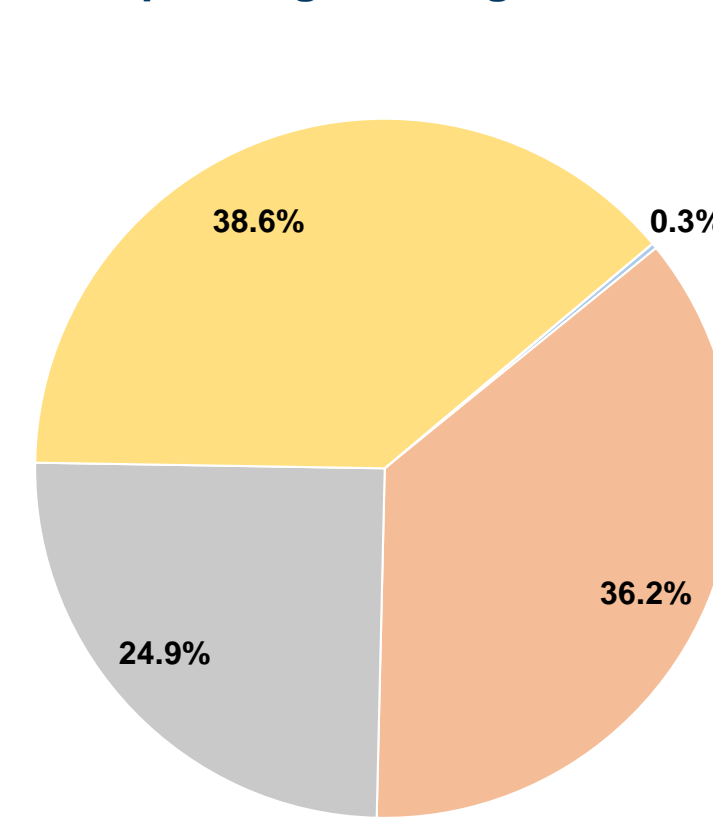
Sources of Operating Funds Expended

Fare Revenues	\$1,746	0.3%
Local Funds	\$245,656	36.2%
State Funds	\$168,815	24.9%
Federal Assistance	\$262,000	38.6%
Other Funds	\$0	0.0%
Total Operating Funds Expended	\$678,217	100.0%

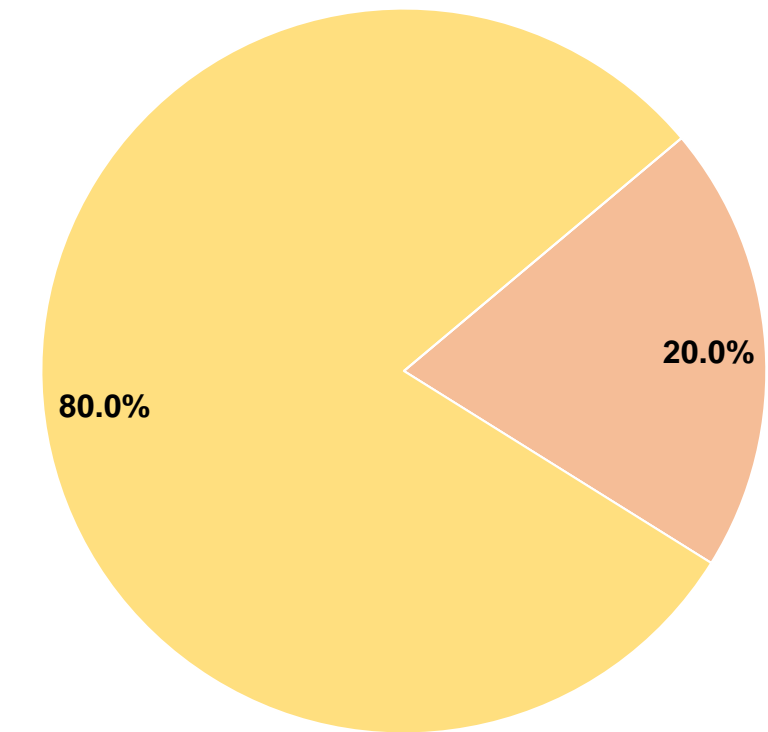
Sources of Capital Funds Expended

Fare Revenues	\$0	0.0%
Local Funds	\$50,532	20.0%
State Funds	\$0	0.0%
Federal Assistance	\$202,141	80.0%
Other Funds	\$0	0.0%
Total Capital Funds Expended	\$252,673	100.0%

Operating Funding Sources



Capital Funding Sources



Modal Characteristics

Operation Characteristics

Vehicles Operated at Maximum Service

Mode	Directly Operated	Purchased Transportation	Operating Expenses	Fare Revenues	Uses of Capital Funds	Annual Unlinked Trips	Annual Vehicle Revenue Miles	Annual Vehicle Revenue Hours	Average Fleet Age in Years ¹
Demand Response	8	-	\$678,217	\$1,746	\$252,673	42,292	129,990	10,334	8.8
Total	8	-	\$678,217	\$1,746	\$252,673	42,292	129,990	10,334	

Performance Measures

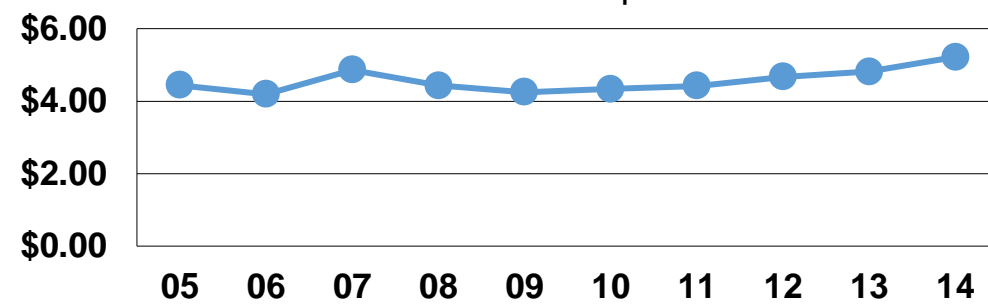
Service Efficiency

Mode	Operating Expenses per Vehicle Revenue Mile	Operating Expenses per Vehicle Revenue Hour
Demand Response	\$5.22	\$65.63
Total	\$5.22	\$65.63

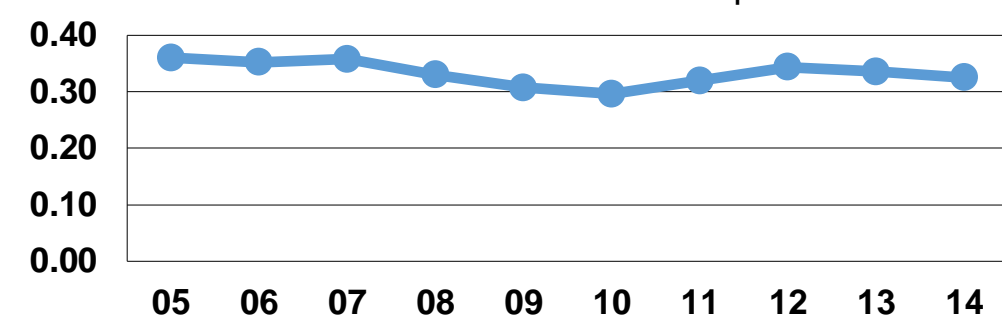
Service Effectiveness

Mode	Operating Expenses per Unlinked Passenger Trip	Unlinked Trips per Vehicle Revenue Mile	Unlinked Trips per Vehicle Revenue Hour
Demand Response	\$16.04	0.3	4.1
Total	\$16.04	0.3	4.1

Operating Expense per Vehicle Revenue Mile: Demand Response



Unlinked Passenger Trips per Vehicle Revenue Mile: Demand Response



Notes:

¹Demand Response - Taxi (DT) and non-dedicated fleets do not report fleet age data.