

General Information

Urbanized Area (UZA) Statistics - 2010 Census

Dallas-Fort Worth-Arlington, TX
1,779 **Square Miles**
5,121,892 **Population**
6 **Pop. Rank out of 498 UZAs**

Service Area Statistics

41 **Square Miles**
131,000 **Population**

Service Consumption

29,059 **Annual Unlinked Trips (UPT)**

Service Supplied

174,143 **Annual Vehicle Revenue Miles (VRM)**
17,099 **Annual Vehicle Revenue Hours (VRH)**

Database Information

NTDID: 60070

Reporter Type: Small Systems Reporter

Financial Information

Sources of Operating Funds Expended

| | | |
|--------------------|-----------|-------|
| Fare Revenues | \$15,181 | 2.6% |
| Local Funds | \$161,753 | 27.7% |
| State Funds | \$138,174 | 23.7% |
| Federal Assistance | \$268,468 | 46.0% |
| Other Funds | \$0 | 0.0% |

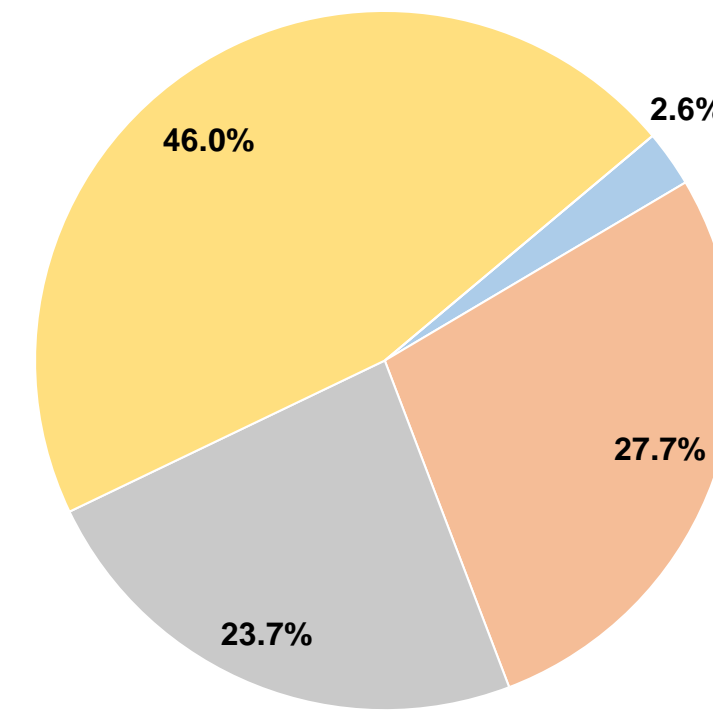
Total Operating Funds Expended \$583,576 100.0%

Sources of Capital Funds Expended

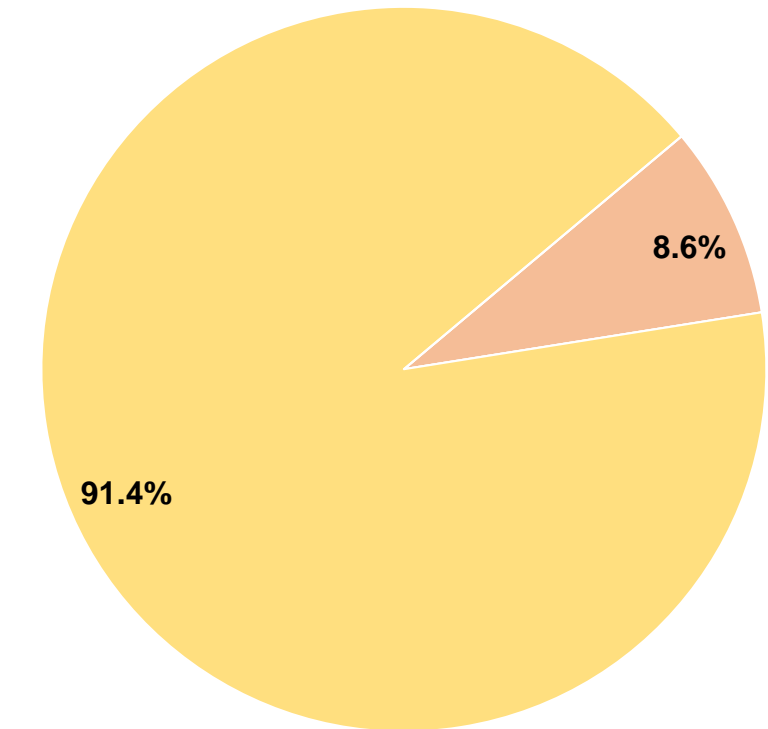
| | | |
|--------------------|-----------|-------|
| Fare Revenues | \$0 | 0.0% |
| Local Funds | \$39,501 | 8.6% |
| State Funds | \$0 | 0.0% |
| Federal Assistance | \$419,750 | 91.4% |
| Other Funds | \$0 | 0.0% |

Total Capital Funds Expended \$459,251 100.0%

Operating Funding Sources



Capital Funding Sources



Modal Characteristics

Operation Characteristics

Vehicles Operated at Maximum Service

| Mode | Directly Operated | Purchased Transportation | Operating Expenses | Fare Revenues | Uses of Capital Funds | Annual Unlinked Trips | Annual Vehicle Revenue Miles | Annual Vehicle Revenue Hours | Average Fleet Age in Years ¹ |
|-----------------|-------------------|--------------------------|--------------------|-----------------|-----------------------|-----------------------|------------------------------|------------------------------|---|
| Demand Response | 14 | - | \$583,576 | \$15,181 | \$459,251 | 29,059 | 174,143 | 17,099 | 5.1 |
| Total | 14 | - | \$583,576 | \$15,181 | \$459,251 | 29,059 | 174,143 | 17,099 | |

Performance Measures

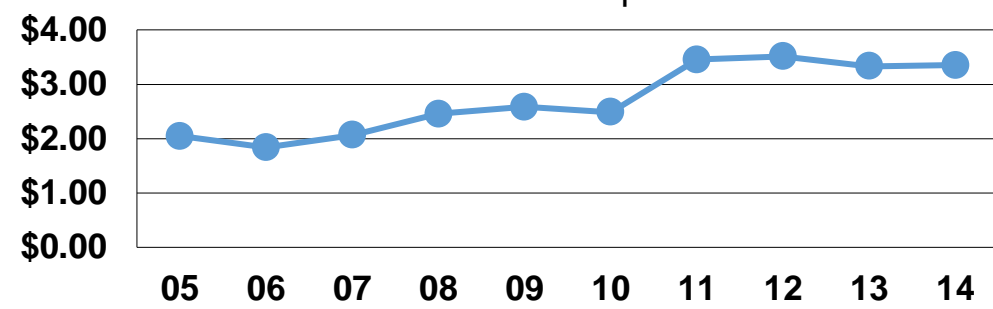
Service Efficiency

| Mode | Operating Expenses per Vehicle Revenue Mile | Operating Expenses per Vehicle Revenue Hour |
|-----------------|---|---|
| Demand Response | \$3.35 | \$34.13 |
| Total | \$3.35 | \$34.13 |

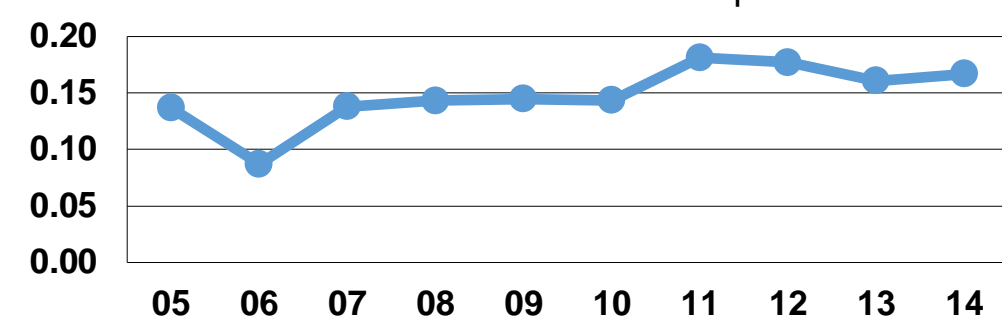
Service Effectiveness

| Mode | Operating Expenses per Unlinked Passenger Trip | Unlinked Trips per Vehicle Revenue Mile | Unlinked Trips per Vehicle Revenue Hour |
|-----------------|--|---|---|
| Demand Response | \$20.08 | 0.2 | 1.7 |
| Total | \$20.08 | 0.2 | 1.7 |

Operating Expense per Vehicle Revenue Mile: Demand Response



Unlinked Passenger Trips per Vehicle Revenue Mile: Demand Response



Notes:

¹Demand Response - Taxi (DT) and non-dedicated fleets do not report fleet age data.