

General Information

Urbanized Area (UZA) Statistics - 2010 Census

McAllen, TX
358 Square Miles
728,825 Population
57 Pop. Rank out of 498 UZAs

Other UZAs Served

0 Texas Non-UZA; 237 Harlingen, TX

Service Area Statistics

314 Square Miles
728,825 Population

Service Consumption

397,958 Annual Unlinked Trips (UPT)

Service Supplied

1,193,129 Annual Vehicle Revenue Miles (VRM)
59,050 Annual Vehicle Revenue Hours (VRH)

Database Information

NTDID: 60090

Reporter Type: Small Systems Reporter

Financial Information

Sources of Operating Funds Expended

Fare Revenues	\$166,254	3.8%
Local Funds	\$827,263	19.1%
State Funds	\$1,131,488	26.1%
Federal Assistance	\$2,186,404	50.5%
Other Funds	\$16,813	0.4%

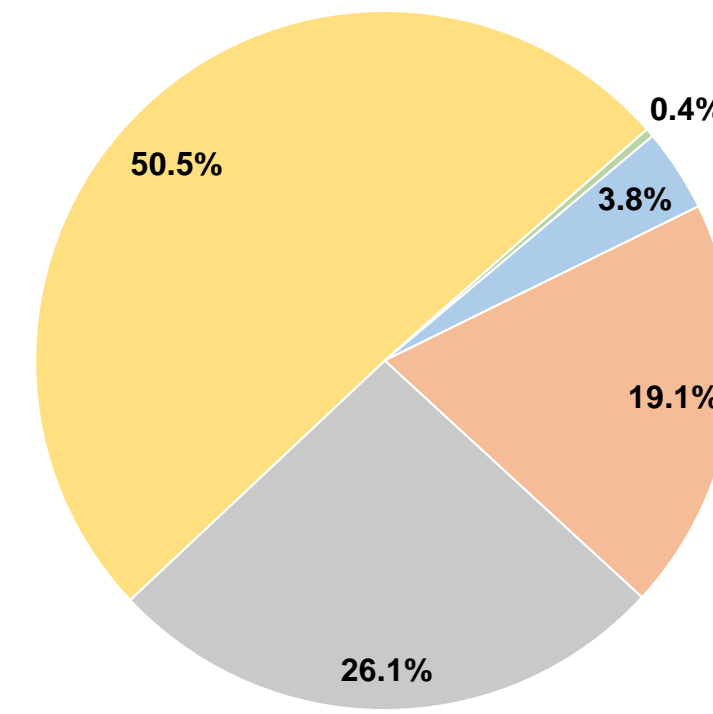
Total Operating Funds Expended \$4,328,222 100.0%

Sources of Capital Funds Expended

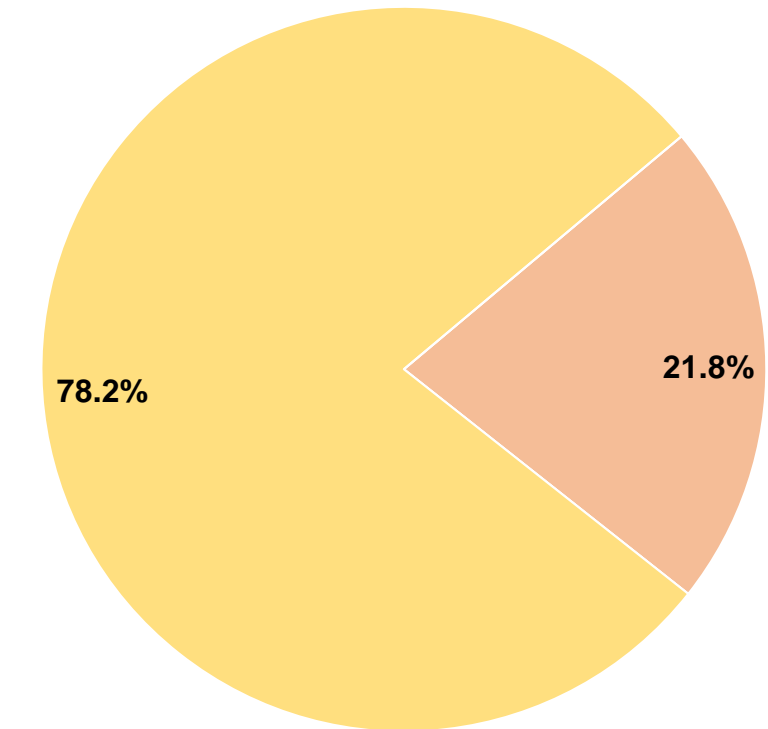
Fare Revenues	\$0	0.0%
Local Funds	\$801,280	21.8%
State Funds	\$0	0.0%
Federal Assistance	\$2,882,402	78.2%
Other Funds	\$0	0.0%

Total Capital Funds Expended \$3,683,682 100.0%

Operating Funding Sources



Capital Funding Sources



Modal Characteristics

Operation Characteristics

Vehicles Operated at Maximum Service

Mode	Directly Operated	Purchased Transportation	Operating Expenses	Fare Revenues	Uses of Capital Funds	Annual Unlinked Trips	Annual Vehicle Revenue Miles	Annual Vehicle Revenue Hours	Average Fleet Age in Years ¹
Commuter Bus	9	-	\$641,454	\$41,955	\$0	121,294	314,001	14,044	3.3
Demand Response	3	-	\$181,113	\$0	\$0	5,467	65,489	2,839	3.5
Bus	18	-	\$3,505,655	\$124,299	\$3,683,682	271,197	813,639	42,167	3.5
Total	30	-	\$4,328,222	\$166,254	\$3,683,682	397,958	1,193,129	59,050	

Performance Measures

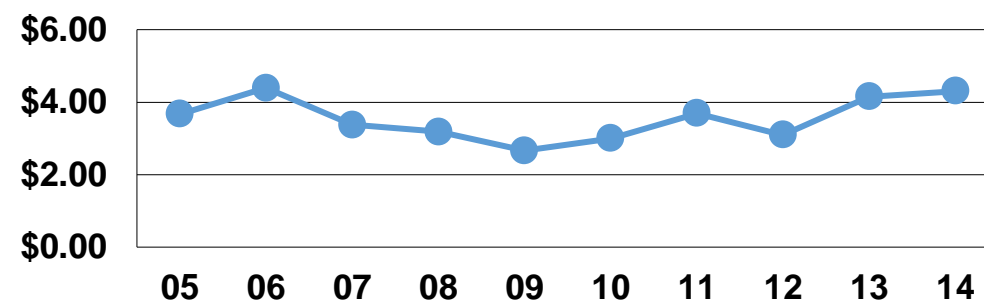
Service Efficiency

Mode	Operating Expenses per Vehicle Revenue Mile	Operating Expenses per Vehicle Revenue Hour
Commuter Bus	\$2.04	\$45.67
Demand Response	\$2.77	\$63.79
Bus	\$4.31	\$83.14
Total	\$3.63	\$73.30

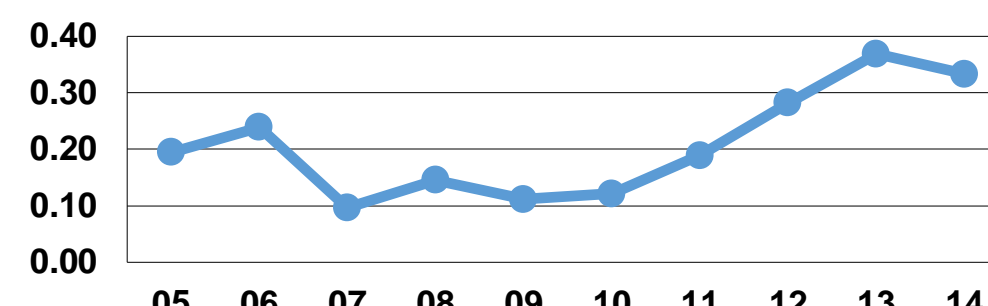
Service Effectiveness

Mode	Operating Expenses per Unlinked Passenger Trip	Unlinked Trips per Vehicle Revenue Mile	Unlinked Trips per Vehicle Revenue Hour
Commuter Bus	\$5.29	0.4	8.6
Demand Response	\$33.13	0.1	1.9
Bus	\$12.93	0.3	6.4
Total	\$10.88	0.3	6.7

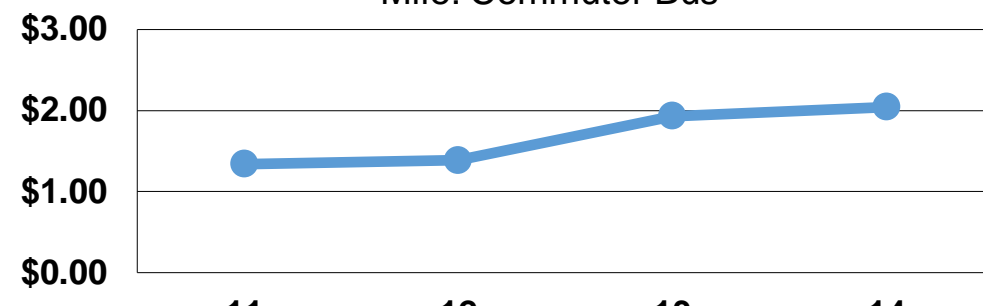
Operating Expense per Vehicle Revenue Mile: Bus



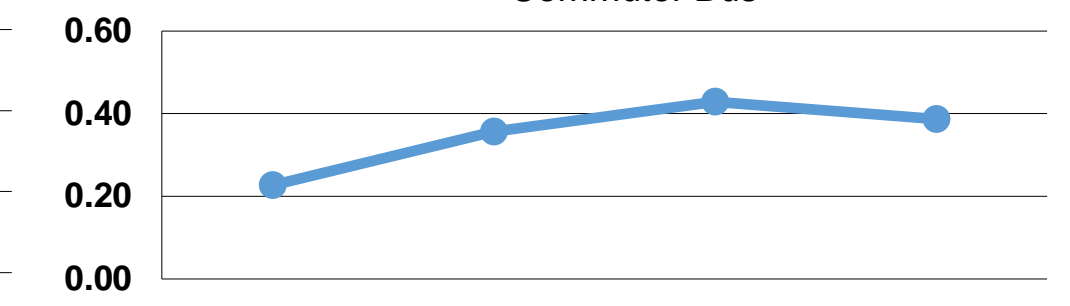
Unlinked Passenger Trips per Vehicle Revenue Mile: Bus



Unlinked Passenger Trips per Vehicle Revenue Mile: Commuter Bus



Operating Expense per Vehicle Revenue Mile: Commuter Bus



Notes:

¹Demand Response - Taxi (DT) and non-dedicated fleets do not report fleet age data.