

General Information

Urbanized Area (UZA) Statistics - 2010 Census

Slidell, LA
59 Square Miles
91,151 Population
318 Pop. Rank out of 498 UZAs

Other UZAs Served

327 Mandeville-Covington, LA; 0 Louisiana Non-UZA

Service Area Statistics

127 Square Miles
181,284 Population

Service Consumption

59,024 Annual Unlinked Trips (UPT)

Service Supplied

518,870 Annual Vehicle Revenue Miles (VRM)
29,978 Annual Vehicle Revenue Hours (VRH)

Database Information

NTDID: 60109

Reporter Type: Small Systems Reporter

Financial Information

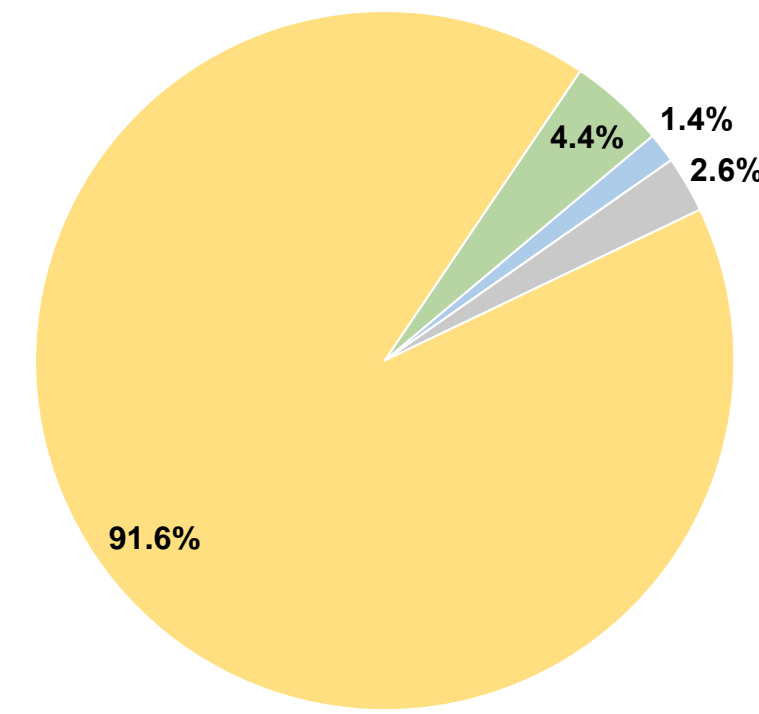
Sources of Operating Funds Expended

Fare Revenues	\$41,206	1.4%
Local Funds	\$0	0.0%
State Funds	\$76,944	2.6%
Federal Assistance	\$2,699,407	91.6%
Other Funds	\$130,588	4.4%
Total Operating Funds Expended	\$2,948,145	100.0%

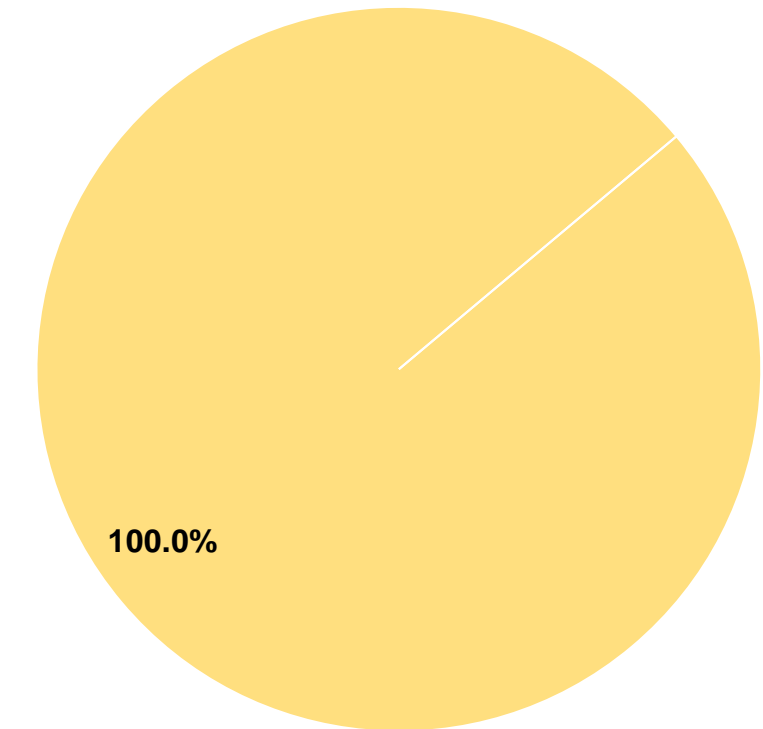
Sources of Capital Funds Expended

Fare Revenues	\$0	0.0%
Local Funds	\$0	0.0%
State Funds	\$0	0.0%
Federal Assistance	\$460,486	100.0%
Other Funds	\$0	0.0%
Total Capital Funds Expended	\$460,486	100.0%

Operating Funding Sources



Capital Funding Sources



Modal Characteristics

Operation Characteristics

Vehicles Operated at Maximum Service

Mode	Directly Operated	Purchased Transportation	Operating Expenses	Fare Revenues	Uses of Capital Funds	Annual Unlinked Trips	Annual Vehicle Revenue Miles	Annual Vehicle Revenue Hours	Average Fleet Age in Years ¹
Demand Response	-	10	\$2,948,145	\$41,206	\$460,486	59,024	518,870	29,978	1.4
Total	-	10	\$2,948,145	\$41,206	\$460,486	59,024	518,870	29,978	

Performance Measures

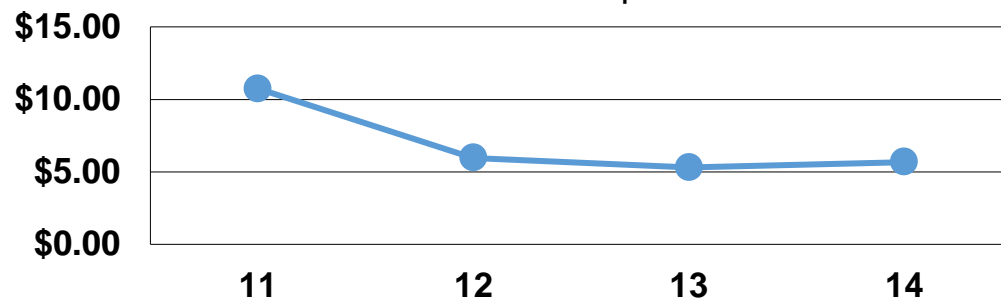
Service Efficiency

Mode	Operating Expenses per Vehicle Revenue Mile	Operating Expenses per Vehicle Revenue Hour
Demand Response	\$5.68	\$98.34
Total	\$5.68	\$98.34

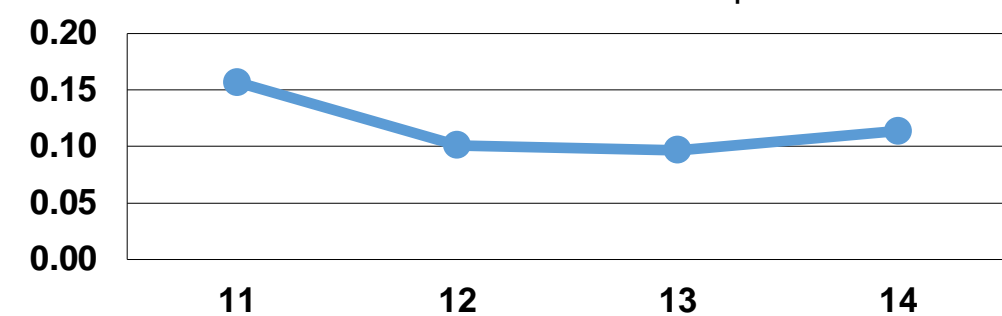
Service Effectiveness

Mode	Operating Expenses per Unlinked Passenger Trip	Unlinked Trips per Vehicle Revenue Mile	Unlinked Trips per Vehicle Revenue Hour
Demand Response	\$49.95	0.1	2.0
Total	\$49.95	0.1	2.0

Operating Expense per Vehicle Revenue Mile: Demand Response



Unlinked Passenger Trips per Vehicle Revenue Mile: Demand Response



Notes:

¹Demand Response - Taxi (DT) and non-dedicated fleets do not report fleet age data.