

Special Programs for Aging Needs (SPAN)

2014 Annual Agency Profile

General Information

Urbanized Area (UZA) Statistics - 2010 Census

Denton-Lewisville, TX
145 Square Miles
366,174 Population
104 Pop. Rank out of 498 UZAs

Other UZAs Served

6 Dallas-Fort Worth-Arlington, TX; 0 Texas Non-UZA

Service Area Statistics

878 Square Miles
728,799 Population

Service Consumption

66,580 Annual Unlinked Trips (UPT)

Service Supplied

598,301 Annual Vehicle Revenue Miles (VRM)
31,388 Annual Vehicle Revenue Hours (VRH)

Database Information

NTDID: 60116

Reporter Type: Small Systems Reporter

Financial Information

Sources of Operating Funds Expended

Fare Revenues	\$81,275	4.6%
Local Funds	\$63,156	3.6%
State Funds	\$278,511	15.7%
Federal Assistance	\$877,428	49.3%
Other Funds	\$477,711	26.9%

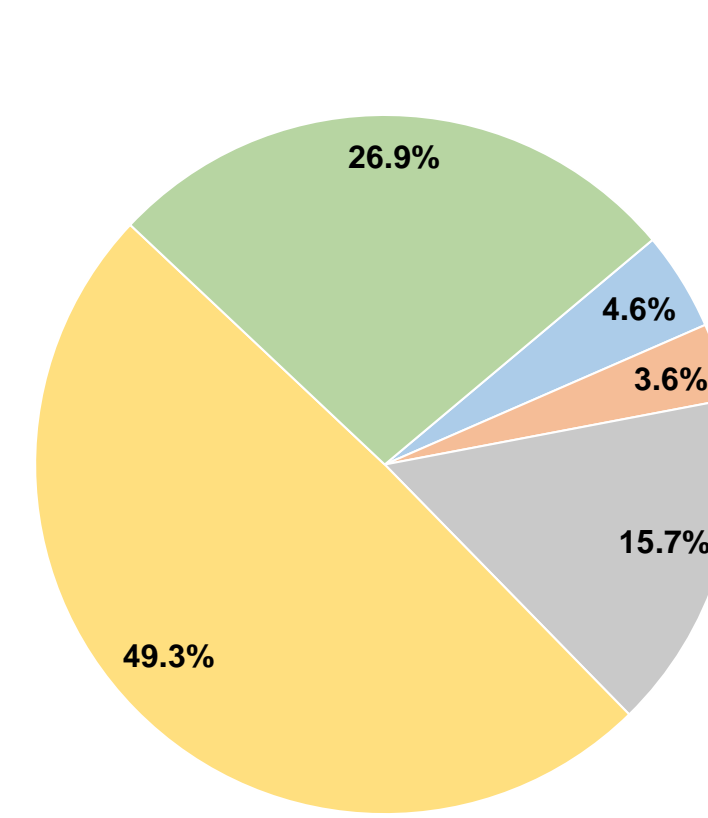
Total Operating Funds Expended \$1,778,081 100.0%

Sources of Capital Funds Expended

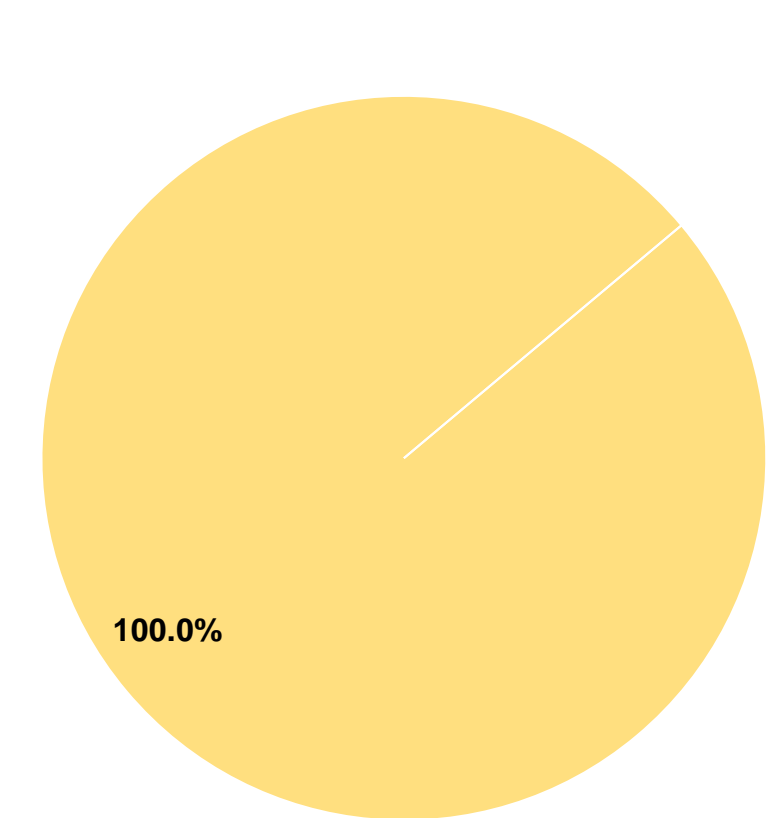
Fare Revenues	\$0	0.0%
Local Funds	\$0	0.0%
State Funds	\$0	0.0%
Federal Assistance	\$368,875	100.0%
Other Funds	\$0	0.0%

Total Capital Funds Expended \$368,875 100.0%

Operating Funding Sources



Capital Funding Sources



Modal Characteristics

Operation Characteristics

Vehicles Operated at Maximum Service

Mode	Directly Operated	Purchased Transportation	Operating Expenses	Fare Revenues	Uses of Capital Funds	Annual Unlinked Trips	Annual Vehicle Revenue Miles	Annual Vehicle Revenue Hours	Average Fleet Age in Years ¹
Demand Response	27	-	\$1,778,081	\$81,275	\$368,875	66,580	598,301	31,388	2.6
Total	27	-	\$1,778,081	\$81,275	\$368,875	66,580	598,301	31,388	

Performance Measures

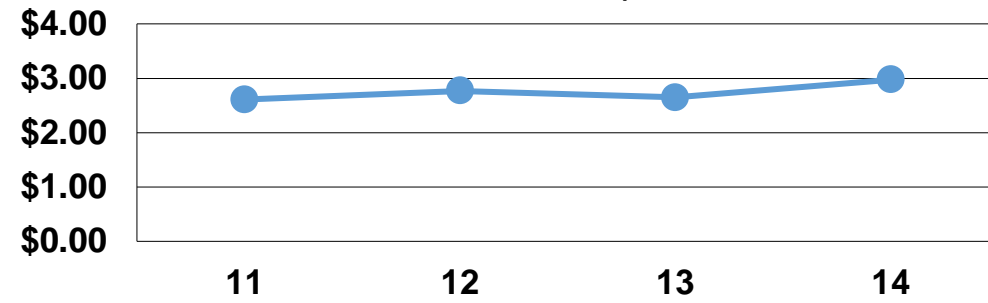
Service Efficiency

Mode	Operating Expenses per Vehicle Revenue Mile	Operating Expenses per Vehicle Revenue Hour
Demand Response	\$2.97	\$56.65
Total	\$2.97	\$56.65

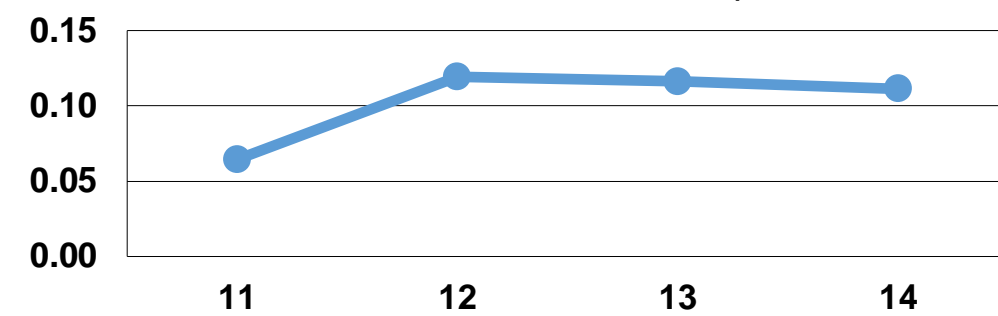
Service Effectiveness

Mode	Operating Expenses per Unlinked Passenger Trip	Unlinked Trips per Vehicle Revenue Mile	Unlinked Trips per Vehicle Revenue Hour
Demand Response	\$26.71	0.1	2.1
Total	\$26.71	0.1	2.1

Operating Expense per Vehicle Revenue Mile: Demand Response



Unlinked Passenger Trips per Vehicle Revenue Mile: Demand Response



Notes:

¹Demand Response - Taxi (DT) and non-dedicated fleets do not report fleet age data.