

General Information

Urbanized Area (UZA) Statistics - 2010 Census

Lafayette, LA
179 Square Miles
252,720 Population
148 Pop. Rank out of 498 UZAs

Other UZAs Served

0 Louisiana Non-UZA

Service Area Statistics

148 Square Miles
73,999 Population

Service Consumption

15,448 Annual Unlinked Trips (UPT)

Service Supplied

179,940 Annual Vehicle Revenue Miles (VRM)
9,709 Annual Vehicle Revenue Hours (VRH)

Database Information

NTDID: 60132

Reporter Type: Small Systems Reporter

Financial Information

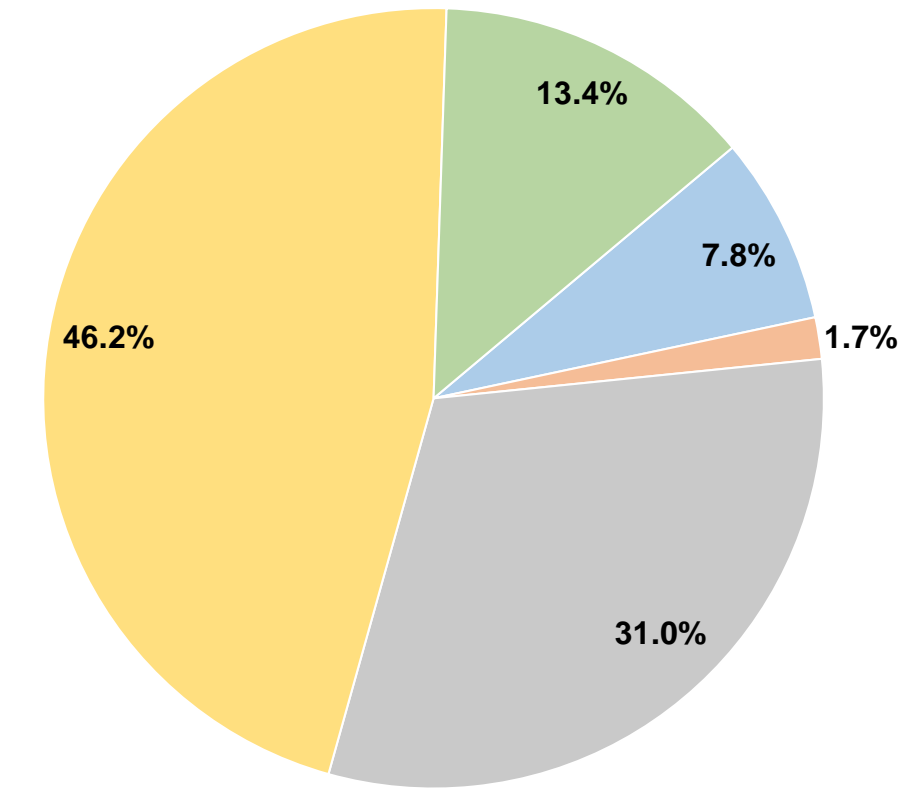
Sources of Operating Funds Expended

| | | |
|---------------------------------------|------------------|---------------|
| Fare Revenues | \$30,606 | 7.8% |
| Local Funds | \$6,770 | 1.7% |
| State Funds | \$121,820 | 31.0% |
| Federal Assistance | \$181,770 | 46.2% |
| Other Funds | \$52,569 | 13.4% |
| Total Operating Funds Expended | \$393,535 | 100.0% |

Sources of Capital Funds Expended

| | |
|-------------------------------------|------------|
| Fare Revenues | \$0 |
| Local Funds | \$0 |
| State Funds | \$0 |
| Federal Assistance | \$0 |
| Other Funds | \$0 |
| Total Capital Funds Expended | \$0 |

Operating Funding Sources



Modal Characteristics

Operation Characteristics

Vehicles Operated at Maximum Service

| Mode | Directly Operated | Purchased Transportation | Operating Expenses | Fare Revenues | Uses of Capital Funds | Annual Unlinked Trips | Annual Vehicle Revenue Miles | Annual Vehicle Revenue Hours | Average Fleet Age in Years ¹ |
|-----------------|-------------------|--------------------------|--------------------|-----------------|-----------------------|-----------------------|------------------------------|------------------------------|---|
| Demand Response | 9 | - | \$393,535 | \$30,606 | \$0 | 15,448 | 179,940 | 9,709 | 3.2 |
| Total | 9 | - | \$393,535 | \$30,606 | \$0 | 15,448 | 179,940 | 9,709 | |

Performance Measures

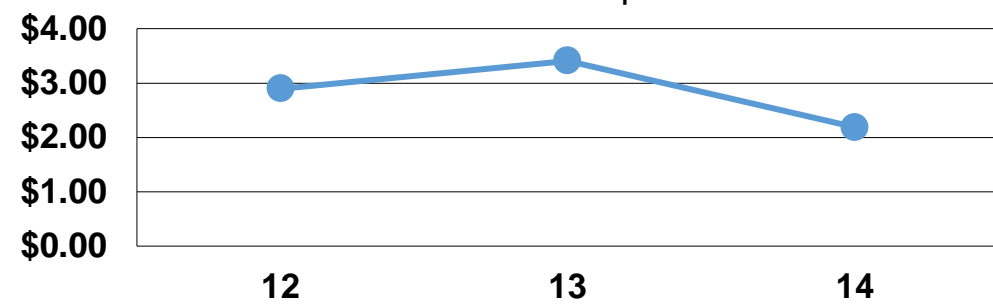
Service Efficiency

| Mode | Operating Expenses per Vehicle Revenue Mile | Operating Expenses per Vehicle Revenue Hour |
|-----------------|---|---|
| Demand Response | \$2.19 | \$40.53 |
| Total | \$2.19 | \$40.53 |

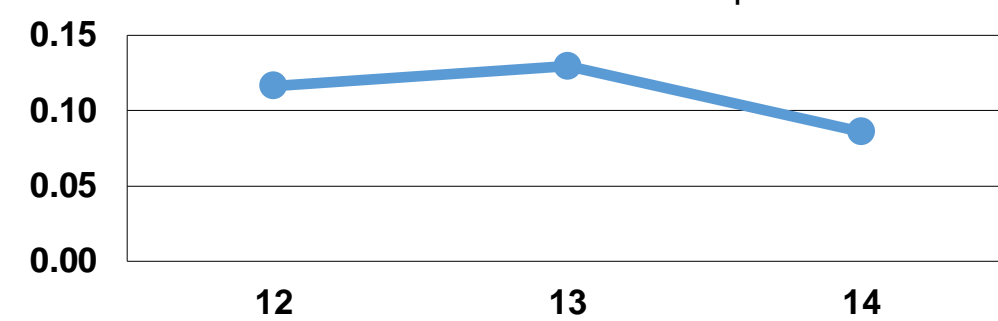
Service Effectiveness

| Mode | Operating Expenses per Unlinked Passenger Trip | Unlinked Trips per Vehicle Revenue Mile | Unlinked Trips per Vehicle Revenue Hour |
|-----------------|--|---|---|
| Demand Response | \$25.47 | 0.1 | 1.6 |
| Total | \$25.47 | 0.1 | 1.6 |

Operating Expense per Vehicle Revenue Mile: Demand Response



Unlinked Passenger Trips per Vehicle Revenue Mile: Demand Response



Notes:

¹Demand Response - Taxi (DT) and non-dedicated fleets do not report fleet age data.