

# Pueblo of Laguna (POL)

2014 Annual Agency Profile

P.O. Box 194  
Laguna, NM 87026

Director: Ms. Ramona Dillard  
505-552-5741

## General Information

### Federally Recognized Tribal Statistical Areas

130 Laguna Pueblo and Off-Reservation Trust Land, NM

### Service Consumption

8,341 Annual Unlinked Trips (UPT)

### Service Supplied

112,019 Annual Vehicle Revenue Miles (VRM)

5,398 Annual Vehicle Revenue Hours (VRH)

### Database Information

NTDID: 60620

Reporter Type: Tribal Reporter

## Financial Information

### Sources of Operating Funds Expended

Fare Revenues	\$0	0.0%
Local Funds	\$79,134	50.0%
State Funds	\$0	0.0%
Federal Assistance	\$79,134	50.0%
Other Funds	\$0	0.0%

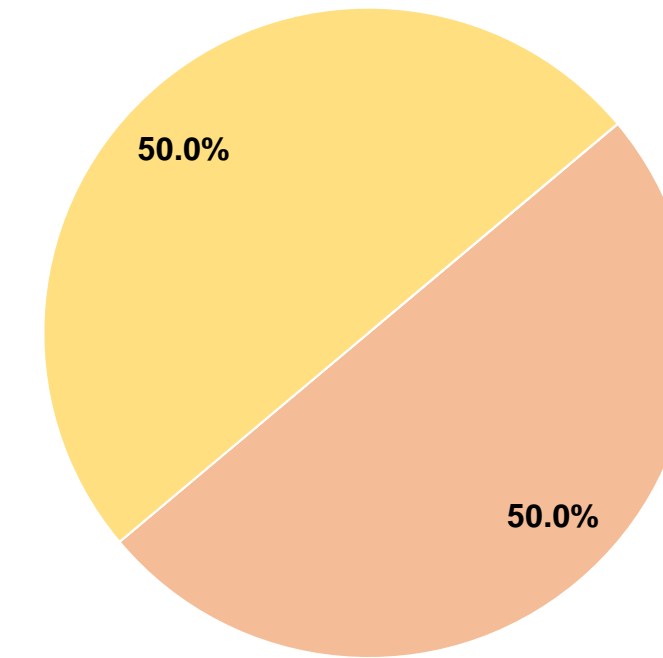
**Total Operating Funds Expended \$158,268 100.0%**

### Sources of Capital Funds Expended

Fare Revenues	\$0
Local Funds	\$0
State Funds	\$0
Federal Assistance	\$0
Other Funds	\$0

**Total Capital Funds Expended \$0**

### Operating Funding Sources



## Modal Characteristics

### Operation Characteristics

#### Vehicles Operated at Maximum Service

Mode	Directly Operated	Purchased Transportation	Operating Expenses	Fare Revenues	Uses of Capital Funds	Annual Unlinked Trips	Annual Vehicle Revenue Miles	Annual Vehicle Revenue Hours	Average Fleet Age in Years <sup>1</sup>
Demand Response	4	-	\$141,441	\$0	\$0	7,168	100,109	4,913	4.6
Bus	1	-	\$16,827	\$0	\$0	1,173	11,910	485	4.6
<b>Total</b>	<b>5</b>	<b>-</b>	<b>\$158,268</b>	<b>\$0</b>	<b>\$0</b>	<b>8,341</b>	<b>112,019</b>	<b>5,398</b>	

### Performance Measures

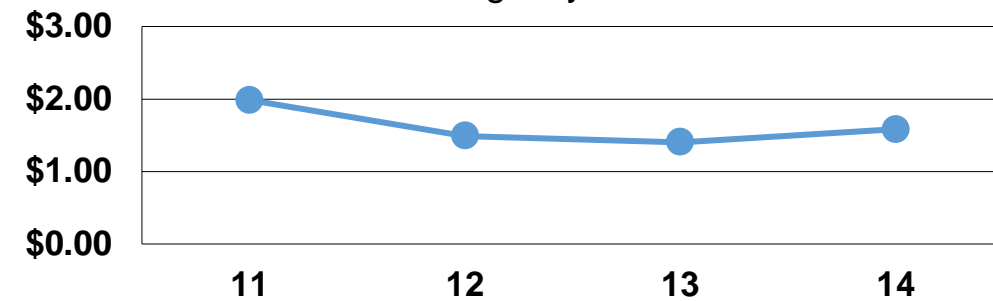
#### Service Efficiency

Mode	Operating Expenses per Vehicle Revenue Mile	Operating Expenses per Vehicle Revenue Hour
Demand Response	\$1.41	\$28.79
Bus	\$1.41	\$34.69
<b>Total</b>	<b>\$1.41</b>	<b>\$29.32</b>

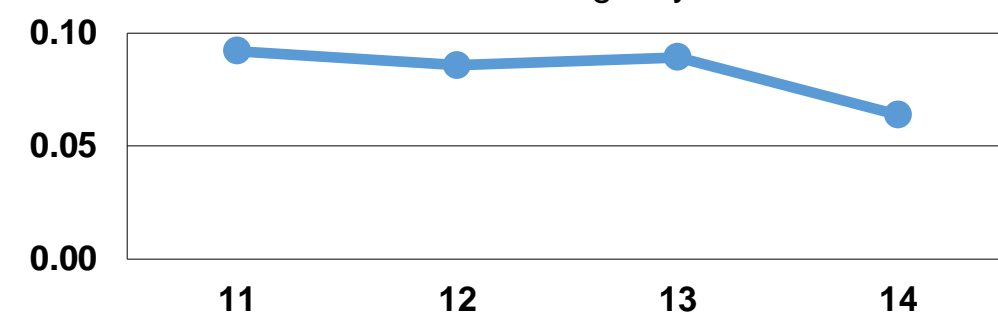
#### Service Effectiveness

Mode	Operating Expenses per Unlinked Passenger Trip	Unlinked Trips per Vehicle Revenue Mile	Unlinked Trips per Vehicle Revenue Hour
Demand Response	\$19.73	0.1	1.5
Bus	\$14.35	0.1	2.4
<b>Total</b>	<b>\$18.97</b>	<b>0.1</b>	<b>1.5</b>

Operating Expense per Vehicle Revenue Mile: Agency Total



Unlinked Passenger Trips per Vehicle Revenue Mile: Agency Total



#### Notes:

<sup>1</sup>Demand Response - Taxi (DT) and non-dedicated fleets do not report fleet age data.