

**General Information**

**Federally Recognized Tribal Statistical Areas**

412 Kiowa-Comanche-Apache-Fort Sill Apache OTSA, OK; 428  
Kiowa-Comanche-Apache-Ft Sill Apache/Caddo-Wichita-

**Service Consumption**

6,294 Annual Unlinked Trips (UPT)

**Service Supplied**

150,769 Annual Vehicle Revenue Miles (VRM)  
7,039 Annual Vehicle Revenue Hours (VRH)

**Database Information**

NTDID: 66164

Reporter Type: Tribal Reporter

**Financial Information**

**Sources of Operating Funds Expended**

Fare Revenues	\$0	0.0%
Local Funds	\$0	0.0%
State Funds	\$0	0.0%
Federal Assistance	\$129,377	100.0%
Other Funds	\$0	0.0%

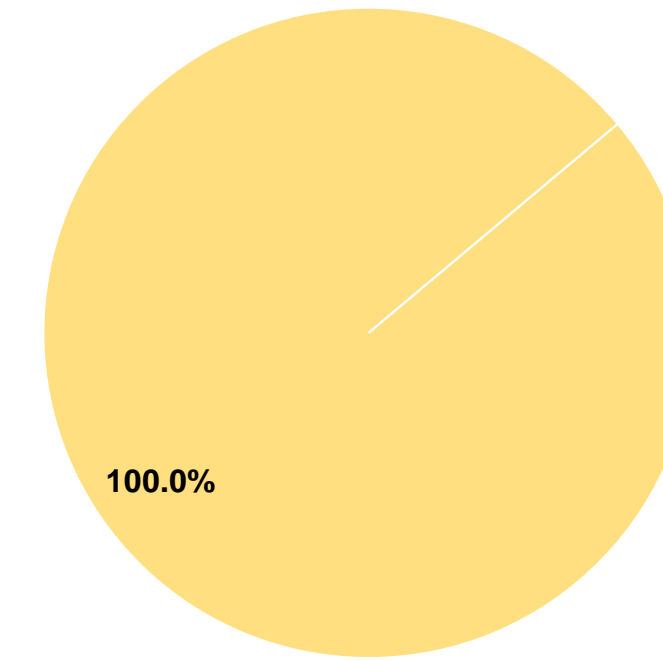
**Total Operating Funds Expended \$129,377 100.0%**

**Sources of Capital Funds Expended**

Fare Revenues	\$0
Local Funds	\$0
State Funds	\$0
Federal Assistance	\$0
Other Funds	\$0

**Total Capital Funds Expended \$0**

**Operating Funding Sources**



**Modal Characteristics**

**Operation Characteristics**

**Vehicles Operated at Maximum Service**

Mode	Directly Operated	Purchased Transportation	Operating Expenses	Fare Revenues	Uses of Capital Funds	Annual Unlinked Trips	Annual Vehicle Revenue Miles	Annual Vehicle Revenue Hours	Average Fleet Age in Years <sup>1</sup>
Demand Response	6	-	\$129,377	\$0	\$0	6,294	150,769	7,039	4.5
<b>Total</b>	<b>6</b>	<b>-</b>	<b>\$129,377</b>	<b>\$0</b>	<b>\$0</b>	<b>6,294</b>	<b>150,769</b>	<b>7,039</b>	

**Performance Measures**

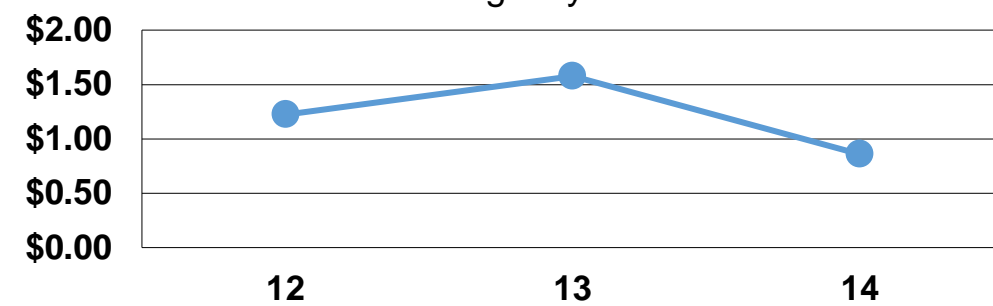
**Service Efficiency**

Mode	Operating Expenses per Vehicle Revenue Mile	Operating Expenses per Vehicle Revenue Hour
Demand Response	\$0.86	\$18.38
<b>Total</b>	<b>\$0.86</b>	<b>\$18.38</b>

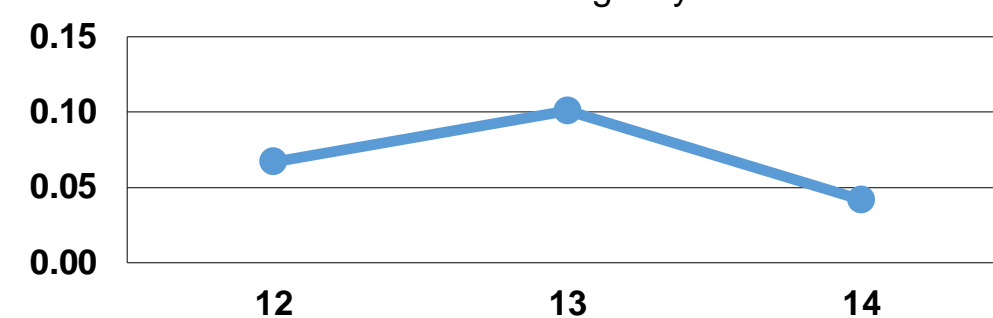
**Service Effectiveness**

Mode	Operating Expenses per Unlinked Passenger Trip	Unlinked Trips per Vehicle Revenue Mile	Unlinked Trips per Vehicle Revenue Hour
Demand Response	\$20.56	0.0	0.9
<b>Total</b>	<b>\$20.56</b>	<b>0.0</b>	<b>0.9</b>

Operating Expense per Vehicle Revenue Mile: Agency Total



Unlinked Passenger Trips per Vehicle Revenue Mile: Agency Total



**Notes:**

<sup>1</sup>Demand Response - Taxi (DT) and non-dedicated fleets do not report fleet age data.