

Cheyenne & Arapaho Tribes (CATT)

2014 Annual Agency Profile

General Information

Federally Recognized Tribal Statistical Areas

403 Cheyenne-Arapaho OTSA, OK

Service Consumption

8,016 Annual Unlinked Trips (UPT)

Service Supplied

253,353 Annual Vehicle Revenue Miles (VRM)
7,816 Annual Vehicle Revenue Hours (VRH)

Database Information

NTDID: 66194

Reporter Type: Tribal Reporter

Financial Information

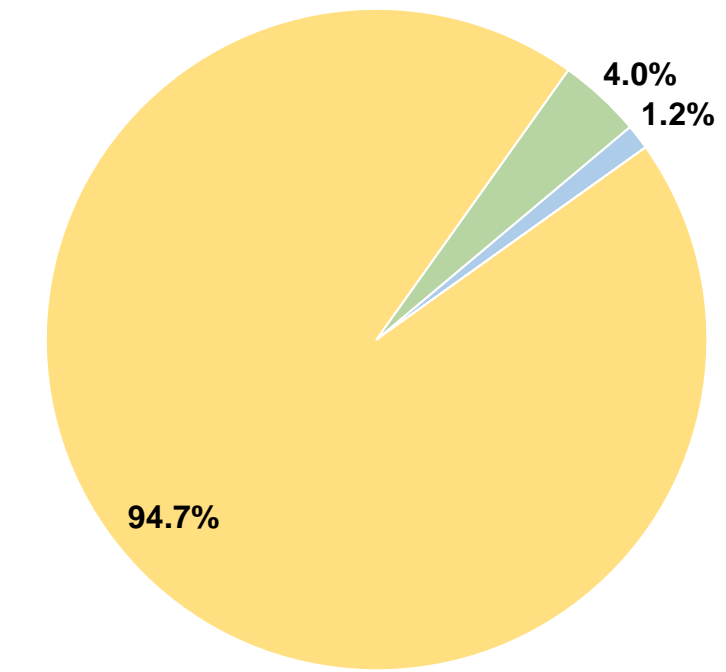
Sources of Operating Funds Expended

Fare Revenues	\$5,892	1.2%
Local Funds	\$0	0.0%
State Funds	\$0	0.0%
Federal Assistance	\$451,139	94.7%
Other Funds	\$19,251	4.0%
Total Operating Funds Expended	\$476,282	100.0%

Sources of Capital Funds Expended

Fare Revenues	\$0
Local Funds	\$0
State Funds	\$0
Federal Assistance	\$0
Other Funds	\$0
Total Capital Funds Expended	\$0

Operating Funding Sources



Modal Characteristics

Operation Characteristics

Vehicles Operated at Maximum Service

Mode	Directly Operated	Purchased Transportation	Operating Expenses	Fare Revenues	Uses of Capital Funds	Annual Unlinked Trips	Annual Vehicle Revenue Miles	Annual Vehicle Revenue Hours	Average Fleet Age in Years ¹
Demand Response	2	-	\$47,628	\$1,283	\$0	205	25,728	726	3.0
Bus	4	-	\$428,654	\$4,609	\$0	7,811	227,625	7,090	3.0
Total	6	-	\$476,282	\$5,892	\$0	8,016	253,353	7,816	

Performance Measures

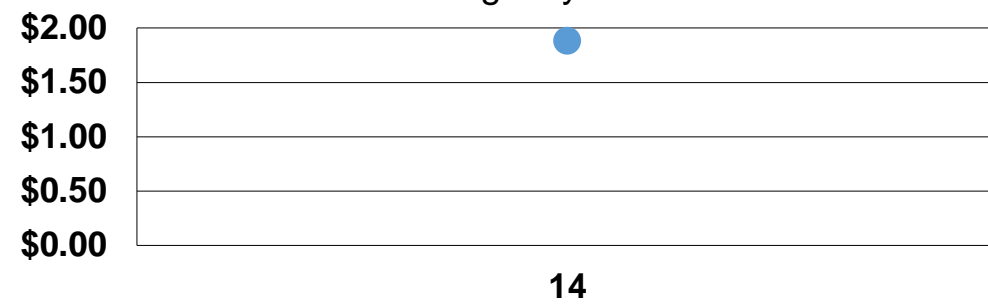
Service Efficiency

Mode	Operating Expenses per Vehicle Revenue Mile	Operating Expenses per Vehicle Revenue Hour
Demand Response	\$1.85	\$65.60
Bus	\$1.88	\$60.46
Total	\$1.88	\$60.94

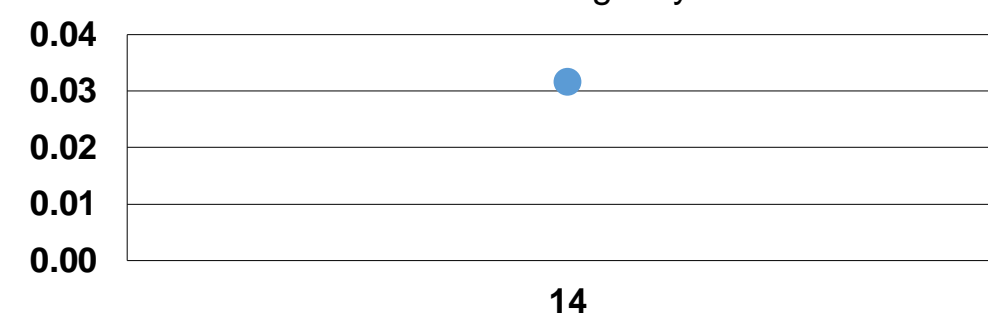
Service Effectiveness

Mode	Operating Expenses per Unlinked Passenger Trip	Unlinked Trips per Vehicle Revenue Mile	Unlinked Trips per Vehicle Revenue Hour
Demand Response	\$232.33	0.0	0.3
Bus	\$54.88	0.0	1.1
Total	\$59.42	0.0	1.0

Operating Expense per Vehicle Revenue Mile: Agency Total



Unlinked Passenger Trips per Vehicle Revenue Mile: Agency Total



Notes:

¹Demand Response - Taxi (DT) and non-dedicated fleets do not report fleet age data.