

## General Information

### Urbanized Area (UZA) Statistics - 2010 Census

St. Joseph, MO-KS  
42 Square Miles  
81,176 Population  
354 Pop. Rank out of 498 UZAs

### Service Area Statistics

39 Square Miles  
78,004 Population

### Service Consumption

423,645 Annual Unlinked Trips (UPT)

### Service Supplied

751,356 Annual Vehicle Revenue Miles (VRM)  
65,309 Annual Vehicle Revenue Hours (VRH)

### Database Information

NTDID: 70032

Reporter Type: Small Systems Reporter

## Financial Information

### Sources of Operating Funds Expended

Fare Revenues	\$287,279	5.7%
Local Funds	\$2,934,915	58.0%
State Funds	\$16,946	0.3%
Federal Assistance	\$1,753,568	34.6%
Other Funds	\$68,212	1.3%

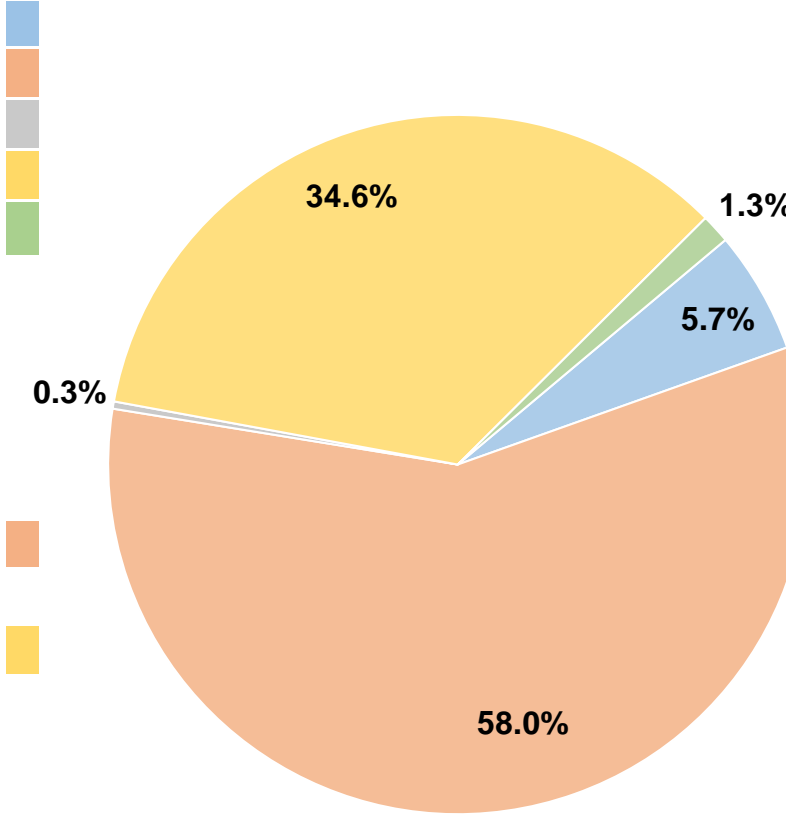
**Total Operating Funds Expended \$5,060,920 100.0%**

### Sources of Capital Funds Expended

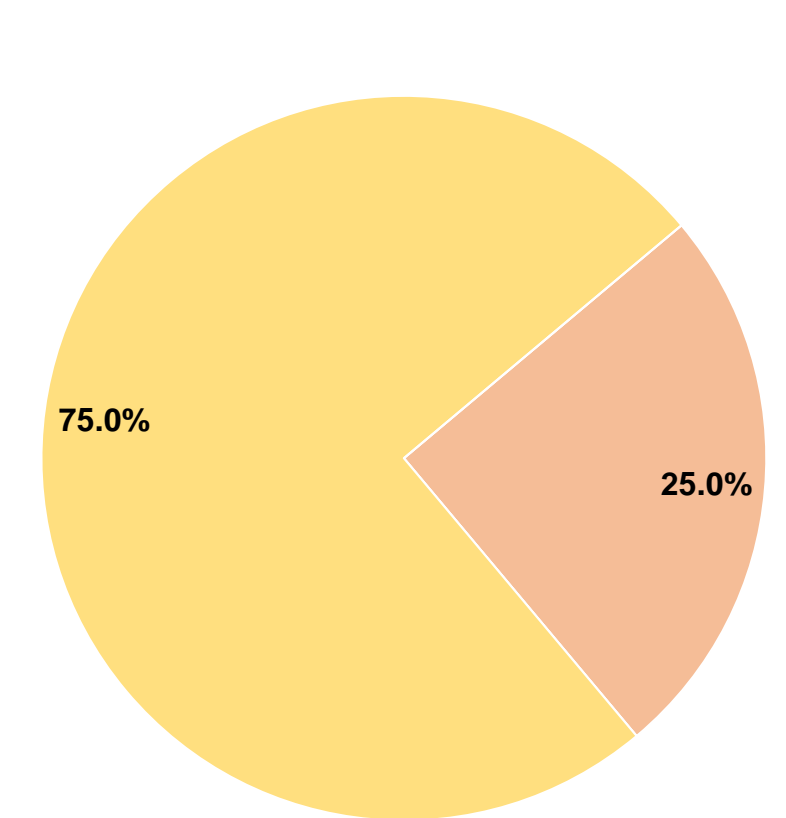
Fare Revenues	\$0	0.0%
Local Funds	\$5,121	25.0%
State Funds	\$0	0.0%
Federal Assistance	\$15,353	75.0%
Other Funds	\$0	0.0%

**Total Capital Funds Expended \$20,474 100.0%**

### Operating Funding Sources



### Capital Funding Sources



## Modal Characteristics

### Operation Characteristics

#### Vehicles Operated at Maximum Service

Mode	Directly Operated	Purchased Transportation	Operating Expenses	Fare Revenues	Uses of Capital Funds	Annual Unlinked Trips	Annual Vehicle Revenue Miles	Annual Vehicle Revenue Hours	Average Fleet Age in Years <sup>1</sup>
Bus	16	-	\$5,060,920	\$287,279	\$20,474	423,645	751,356	65,309	9.2
<b>Total</b>	<b>16</b>	<b>-</b>	<b>\$5,060,920</b>	<b>\$287,279</b>	<b>\$20,474</b>	<b>423,645</b>	<b>751,356</b>	<b>65,309</b>	

### Performance Measures

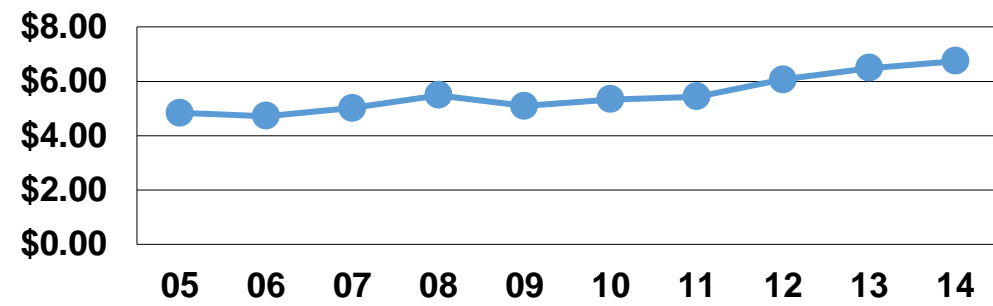
#### Service Efficiency

Mode	Operating Expenses per Vehicle Revenue Mile	Operating Expenses per Vehicle Revenue Hour
Bus	\$6.74	\$77.49
<b>Total</b>	<b>\$6.74</b>	<b>\$77.49</b>

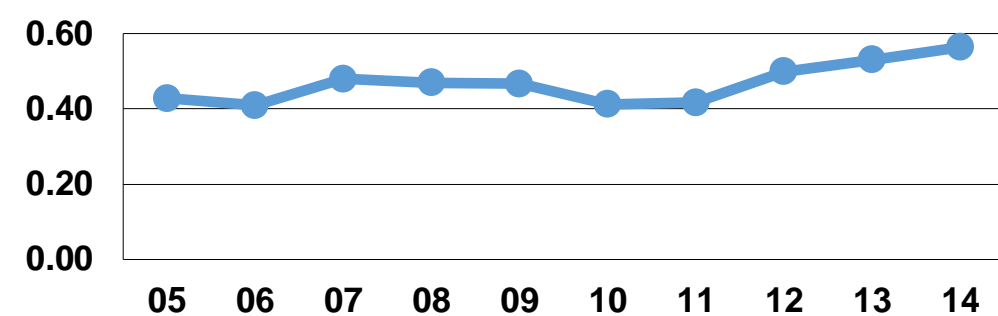
#### Service Effectiveness

Mode	Operating Expenses per Unlinked Passenger Trip	Unlinked Trips per Vehicle Revenue Mile	Unlinked Trips per Vehicle Revenue Hour
Bus	\$11.95	0.6	6.5
<b>Total</b>	<b>\$11.95</b>	<b>0.6</b>	<b>6.5</b>

Operating Expense per Vehicle Revenue Mile: Bus



Unlinked Passenger Trips per Vehicle Revenue Mile: Bus



**Notes:**

<sup>1</sup>Demand Response - Taxi (DT) and non-dedicated fleets do not report fleet age data.