

General Information

Federally Recognized Tribal Statistical Areas

206 Prairie Band of Potawatomi Nation Reservation, KS

Service Consumption

11,827 Annual Unlinked Trips (UPT)

Service Supplied

133,800 Annual Vehicle Revenue Miles (VRM)

8,219 Annual Vehicle Revenue Hours (VRH)

Database Information

NTDID: 77075

Reporter Type: Tribal Reporter

Financial Information

Sources of Operating Funds Expended

Fare Revenues	\$7,616	2.8%
Local Funds	\$28,244	10.4%
State Funds	\$18,830	6.9%
Federal Assistance	\$217,404	79.9%
Other Funds	\$0	0.0%

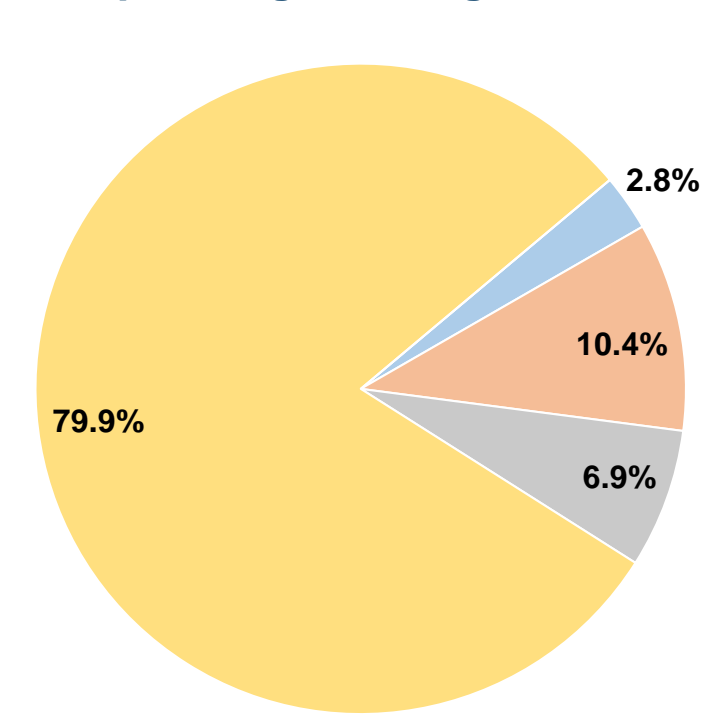
Total Operating Funds Expended \$272,094 100.0%

Sources of Capital Funds Expended

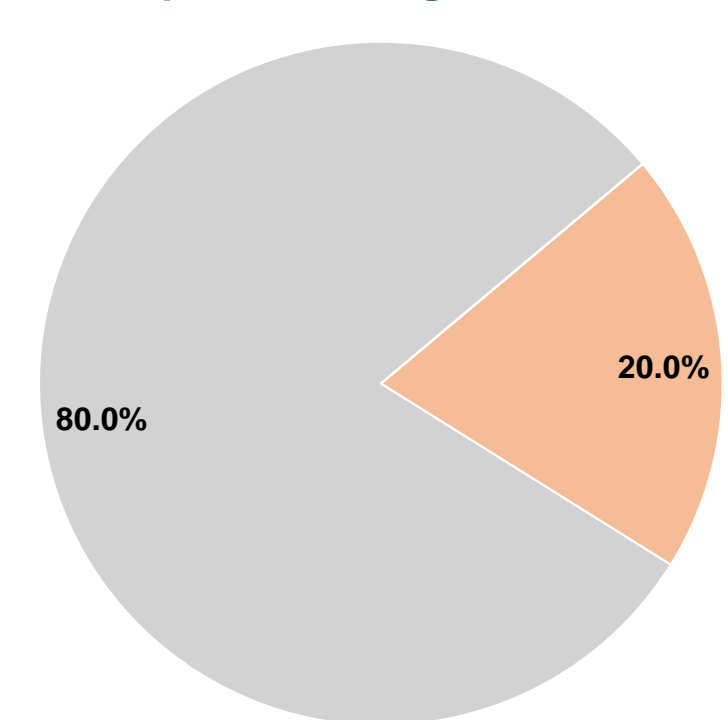
Fare Revenues	\$0	0.0%
Local Funds	\$12,227	20.0%
State Funds	\$48,906	80.0%
Federal Assistance	\$0	0.0%
Other Funds	\$0	0.0%

Total Capital Funds Expended \$61,133 100.0%

Operating Funding Sources



Capital Funding Sources



Modal Characteristics

Operation Characteristics

Vehicles Operated at Maximum Service

Mode	Directly Operated	Purchased Transportation	Operating Expenses	Fare Revenues	Uses of Capital Funds	Annual Unlinked Trips	Annual Vehicle Revenue Miles	Annual Vehicle Revenue Hours	Average Fleet Age in Years ¹
Demand Response	6	-	\$272,094	\$7,616	\$61,133	11,827	133,800	8,219	3.2
Total	6	-	\$272,094	\$7,616	\$61,133	11,827	133,800	8,219	

Performance Measures

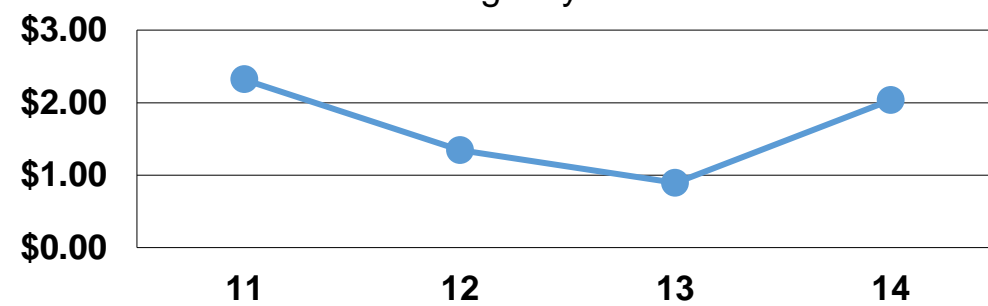
Service Efficiency

Mode	Operating Expenses per Vehicle Revenue Mile	Operating Expenses per Vehicle Revenue Hour
Demand Response	\$2.03	\$33.11
Total	\$2.03	\$33.11

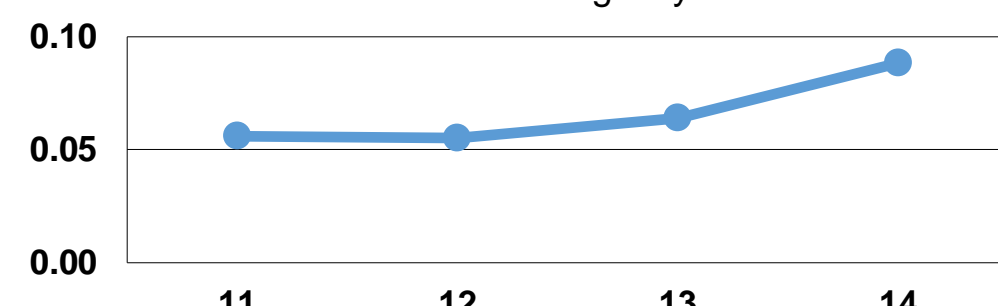
Service Effectiveness

Mode	Operating Expenses per Unlinked Passenger Trip	Unlinked Trips per Vehicle Revenue Mile	Unlinked Trips per Vehicle Revenue Hour
Demand Response	\$23.01	0.1	1.4
Total	\$23.01	0.1	1.4

Operating Expense per Vehicle Revenue Mile: Agency Total



Unlinked Passenger Trips per Vehicle Revenue Mile: Agency Total



Notes:

¹Demand Response - Taxi (DT) and non-dedicated fleets do not report fleet age data.