

**General Information**

**Federally Recognized Tribal Statistical Areas**

264 Spirit Lake Reservation, ND

**Service Consumption**

1,941 Annual Unlinked Trips (UPT)

**Service Supplied**

33,596 Annual Vehicle Revenue Miles (VRM)  
2,384 Annual Vehicle Revenue Hours (VRH)

**Database Information**

NTDID: 88128

Reporter Type: Tribal Reporter

**Financial Information**

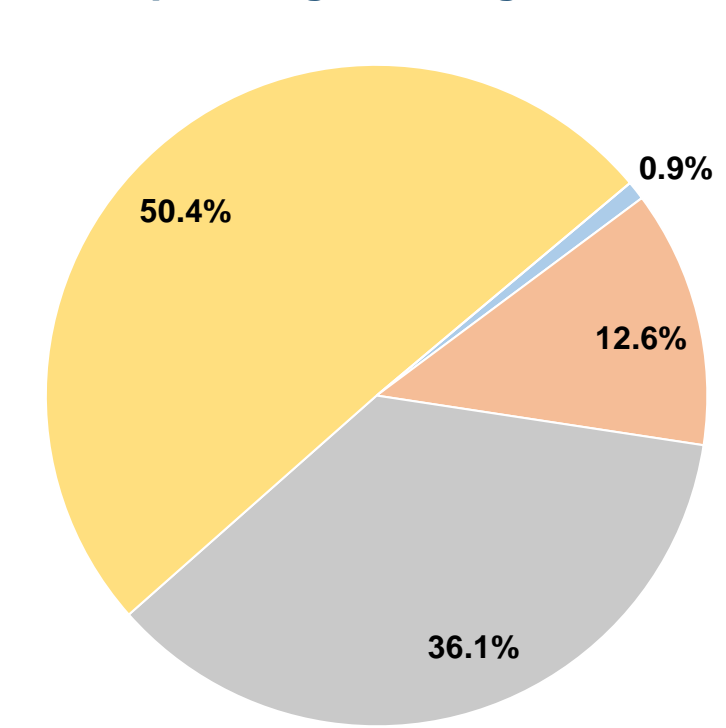
**Sources of Operating Funds Expended**

Fare Revenues	\$1,657	0.9%
Local Funds	\$22,541	12.6%
State Funds	\$64,605	36.1%
Federal Assistance	\$90,278	50.4%
Other Funds	\$0	0.0%
<b>Total Operating Funds Expended</b>	<b>\$179,081</b>	<b>100.0%</b>

**Sources of Capital Funds Expended**

Fare Revenues	\$0
Local Funds	\$0
State Funds	\$0
Federal Assistance	\$0
Other Funds	\$0
<b>Total Capital Funds Expended</b>	<b>\$0</b>

**Operating Funding Sources**



**Modal Characteristics**

**Operation Characteristics**

**Vehicles Operated at Maximum Service**

Mode	Directly Operated	Purchased Transportation	Operating Expenses	Fare Revenues	Uses of Capital Funds	Annual Unlinked Trips	Annual Vehicle Revenue Miles	Annual Vehicle Revenue Hours	Average Fleet Age in Years <sup>1</sup>
Demand Response	2	-	\$179,081	\$1,657	\$0	1,941	33,596	2,384	6.0
<b>Total</b>	<b>2</b>	<b>-</b>	<b>\$179,081</b>	<b>\$1,657</b>	<b>\$0</b>	<b>1,941</b>	<b>33,596</b>	<b>2,384</b>	

**Performance Measures**

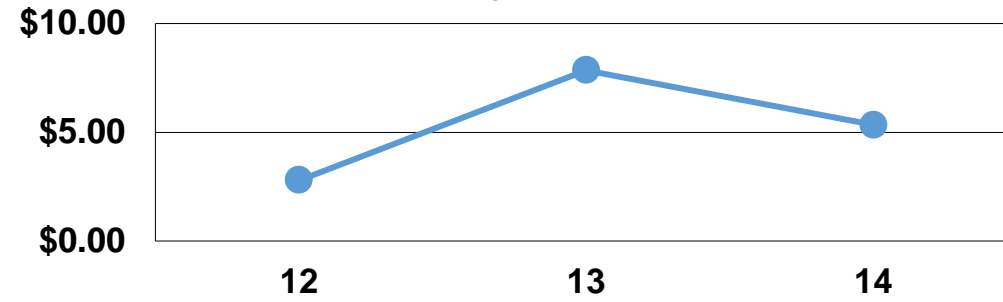
**Service Efficiency**

Mode	Operating Expenses per Vehicle Revenue Mile	Operating Expenses per Vehicle Revenue Hour
Demand Response	\$5.33	\$75.12
<b>Total</b>	<b>\$5.33</b>	<b>\$75.12</b>

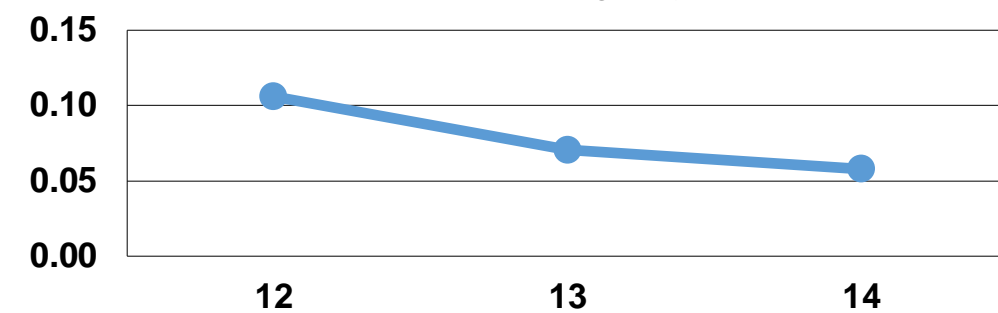
**Service Effectiveness**

Mode	Operating Expenses per Unlinked Passenger Trip	Unlinked Trips per Vehicle Revenue Mile	Unlinked Trips per Vehicle Revenue Hour
Demand Response	\$92.26	0.1	0.8
<b>Total</b>	<b>\$92.26</b>	<b>0.1</b>	<b>0.8</b>

Operating Expense per Vehicle Revenue Mile: Agency Total



Unlinked Passenger Trips per Vehicle Revenue Mile: Agency Total



**Notes:**

<sup>1</sup>Demand Response - Taxi (DT) and non-dedicated fleets do not report fleet age data.