

# Confederated Salish and Kootenai Tribes (CSKT)

2014 Annual Agency Profile

## General Information

### Federally Recognized Tribal Statistical Areas

73 Flathead Reservation, MT

### Service Consumption

49,503 Annual Unlinked Trips (UPT)

### Service Supplied

817,770 Annual Vehicle Revenue Miles (VRM)

46,060 Annual Vehicle Revenue Hours (VRH)

### Database Information

NTDID: 88134

Reporter Type: Tribal Reporter

## Financial Information

### Sources of Operating Funds Expended

Fare Revenues	\$73,495	5.8%
Local Funds	\$351,165	27.8%
State Funds	\$0	0.0%
Federal Assistance	\$840,755	66.4%
Other Funds	\$0	0.0%

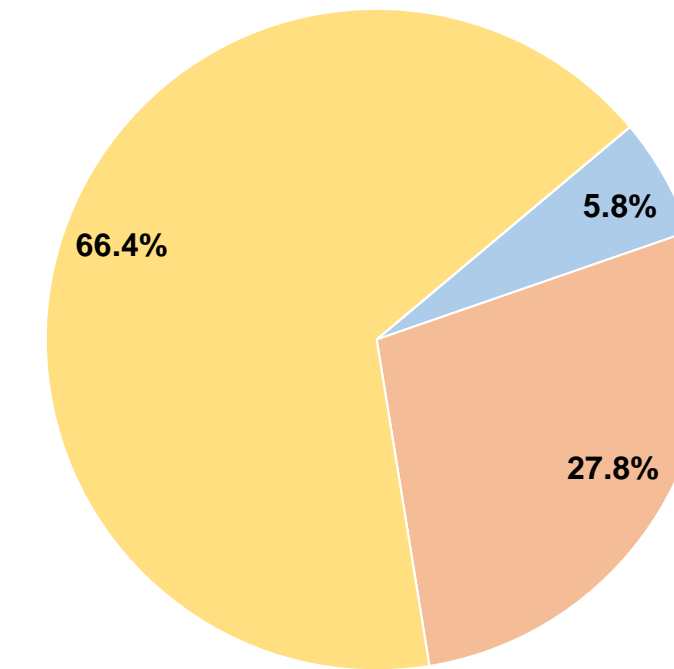
**Total Operating Funds Expended \$1,265,415 100.0%**

### Sources of Capital Funds Expended

Fare Revenues	\$0
Local Funds	\$0
State Funds	\$0
Federal Assistance	\$0
Other Funds	\$0

**Total Capital Funds Expended \$0**

### Operating Funding Sources



## Modal Characteristics

### Operation Characteristics

#### Vehicles Operated at Maximum Service

Mode	Directly Operated	Purchased Transportation	Operating Expenses	Fare Revenues	Uses of Capital Funds	Annual Unlinked Trips	Annual Vehicle Revenue Miles	Annual Vehicle Revenue Hours	Average Fleet Age in Years <sup>1</sup>
Commuter Bus	2	-	\$215,878	\$61,917	\$0	3,146	113,872	2,860	5.0
Demand Response	22	-	\$1,049,537	\$11,578	\$0	46,357	703,898	43,200	4.6
<b>Total</b>	<b>24</b>	<b>-</b>	<b>\$1,265,415</b>	<b>\$73,495</b>	<b>\$0</b>	<b>49,503</b>	<b>817,770</b>	<b>46,060</b>	

### Performance Measures

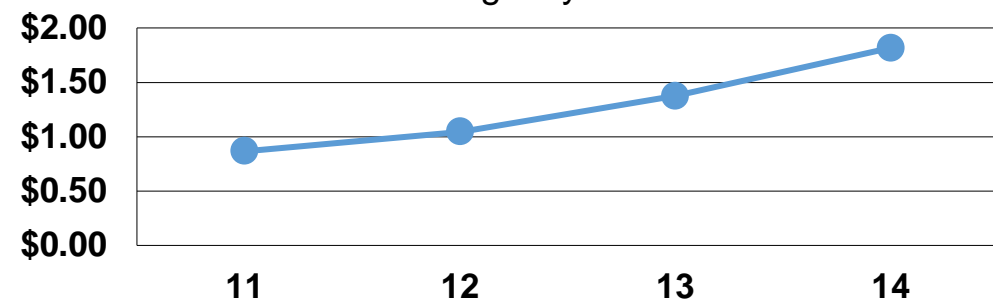
#### Service Efficiency

Mode	Operating Expenses per Vehicle Revenue Mile	Operating Expenses per Vehicle Revenue Hour
Commuter Bus	\$1.90	\$75.48
Demand Response	\$1.49	\$24.29
<b>Total</b>	<b>\$1.55</b>	<b>\$27.47</b>

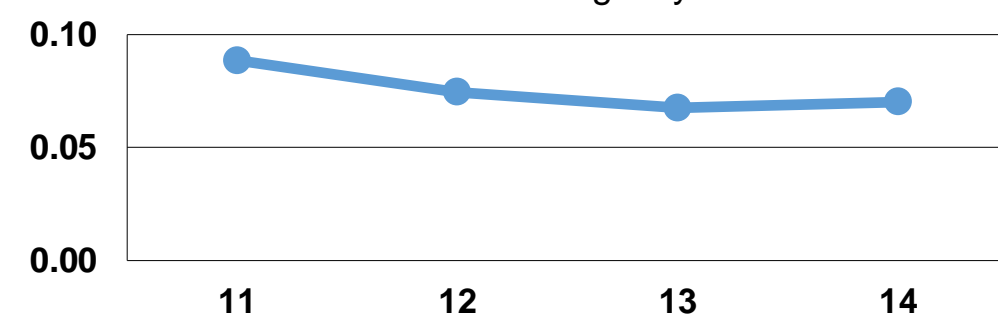
#### Service Effectiveness

Mode	Operating Expenses per Unlinked Passenger Trip	Unlinked Trips per Vehicle Revenue Mile	Unlinked Trips per Vehicle Revenue Hour
Commuter Bus	\$68.62	0.0	1.1
Demand Response	\$22.64	0.1	1.1
<b>Total</b>	<b>\$25.56</b>	<b>0.1</b>	<b>1.1</b>

Operating Expense per Vehicle Revenue Mile: Agency Total



Unlinked Passenger Trips per Vehicle Revenue Mile: Agency Total



**Notes:**

<sup>1</sup>Demand Response - Taxi (DT) and non-dedicated fleets do not report fleet age data.