

General Information

Federally Recognized Tribal Statistical Areas

172 Navajo Nation Reservation and Off-Reservation Trust Land, AZ--NM--UT

Service Consumption

250,842 Annual Unlinked Trips (UPT)

Service Supplied

860,909 Annual Vehicle Revenue Miles (VRM)
23,866 Annual Vehicle Revenue Hours (VRH)

Database Information

NTDID: 90005

Reporter Type: Tribal Reporter

Financial Information

Sources of Operating Funds Expended

Fare Revenues	\$246,886	10.0%
Local Funds	\$732,959	29.8%
State Funds	\$0	0.0%
Federal Assistance	\$1,479,521	60.2%
Other Funds	\$0	0.0%

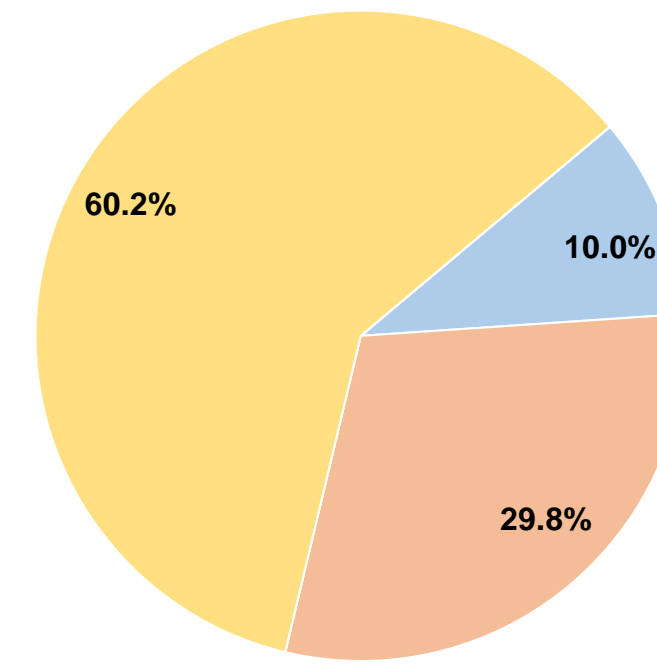
Total Operating Funds Expended \$2,459,366 100.0%

Sources of Capital Funds Expended

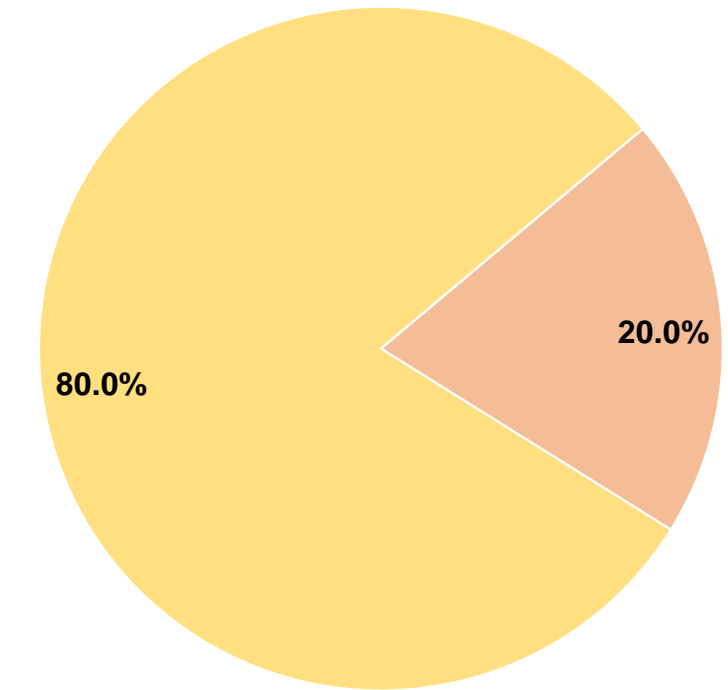
Fare Revenues	\$0	0.0%
Local Funds	\$3,410	20.0%
State Funds	\$0	0.0%
Federal Assistance	\$13,642	80.0%
Other Funds	\$0	0.0%

Total Capital Funds Expended \$17,052 100.0%

Operating Funding Sources



Capital Funding Sources



Modal Characteristics

Operation Characteristics

Vehicles Operated at Maximum Service

Mode	Directly Operated	Purchased Transportation	Operating Expenses	Fare Revenues	Uses of Capital Funds	Annual Unlinked Trips	Annual Vehicle Revenue Miles	Annual Vehicle Revenue Hours	Average Fleet Age in Years ¹
Commuter Bus	18	-	\$2,459,366	\$246,886	\$17,052	250,842	860,909	23,866	4.7
Total	18	-	\$2,459,366	\$246,886	\$17,052	250,842	860,909	23,866	

Performance Measures

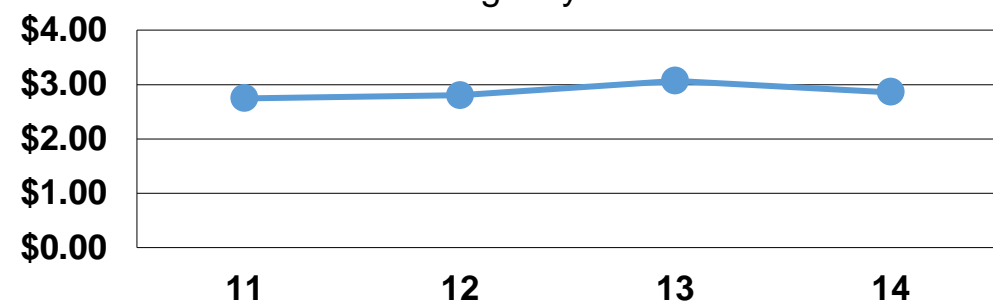
Service Efficiency

Mode	Operating Expenses per Vehicle Revenue Mile	Operating Expenses per Vehicle Revenue Hour
Commuter Bus	\$2.86	\$103.05
Total	\$2.86	\$103.05

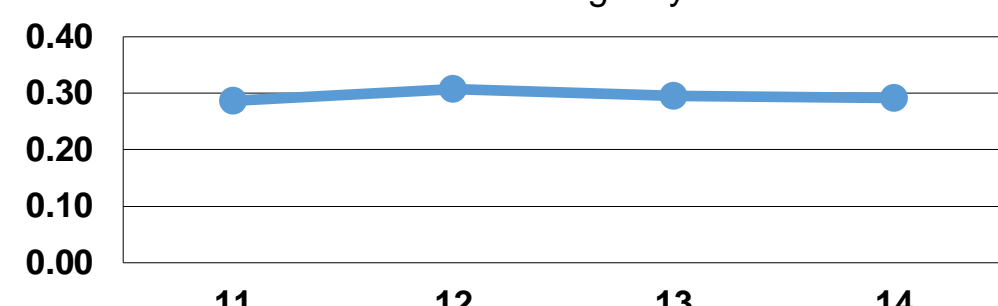
Service Effectiveness

Mode	Operating Expenses per Unlinked Passenger Trip	Unlinked Trips per Vehicle Revenue Mile	Unlinked Trips per Vehicle Revenue Hour
Commuter Bus	\$9.80	0.3	10.5
Total	\$9.80	0.3	10.5

Operating Expense per Vehicle Revenue Mile: Agency Total



Unlinked Passenger Trips per Vehicle Revenue Mile: Agency Total



Notes:

¹Demand Response - Taxi (DT) and non-dedicated fleets do not report fleet age data.