

General Information

Urbanized Area (UZA) Statistics - 2010 Census
 El Paso de Robles (Paso Robles)-Atascadero, CA

31 **Square Miles**
 65,088 **Population**
 423 **Pop. Rank out of 498 UZAs**

Service Area Statistics

25 **Square Miles**
 26,700 **Population**

Service Consumption

45,520 **Annual Unlinked Trips (UPT)**

Service Supplied

121,001 **Annual Vehicle Revenue Miles (VRM)**
 7,758 **Annual Vehicle Revenue Hours (VRH)**

Database Information

NTDID: 90194

Reporter Type: Small Systems Reporter

Financial Information

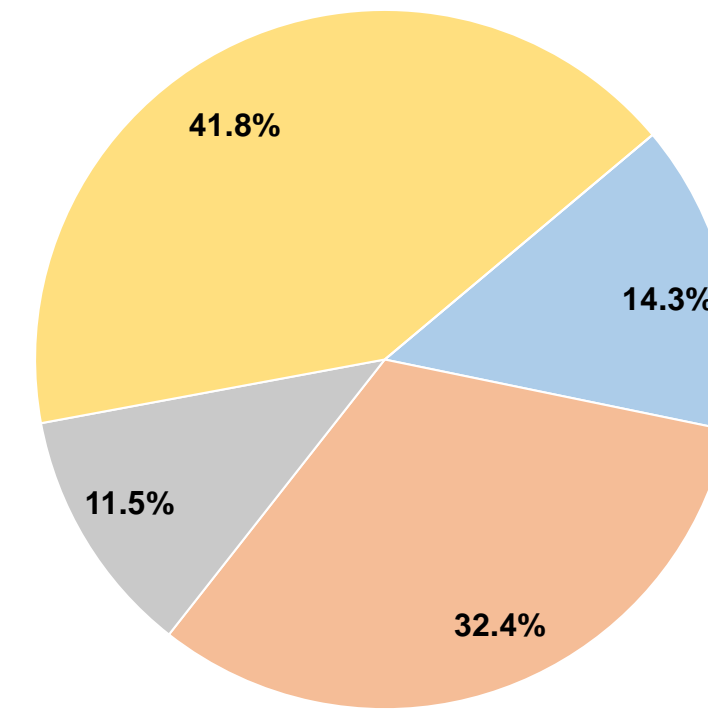
Sources of Operating Funds Expended

Fare Revenues	\$76,187	14.3%
Local Funds	\$171,864	32.4%
State Funds	\$61,065	11.5%
Federal Assistance	\$222,062	41.8%
Other Funds	\$0	0.0%
Total Operating Funds Expended	\$531,178	100.0%

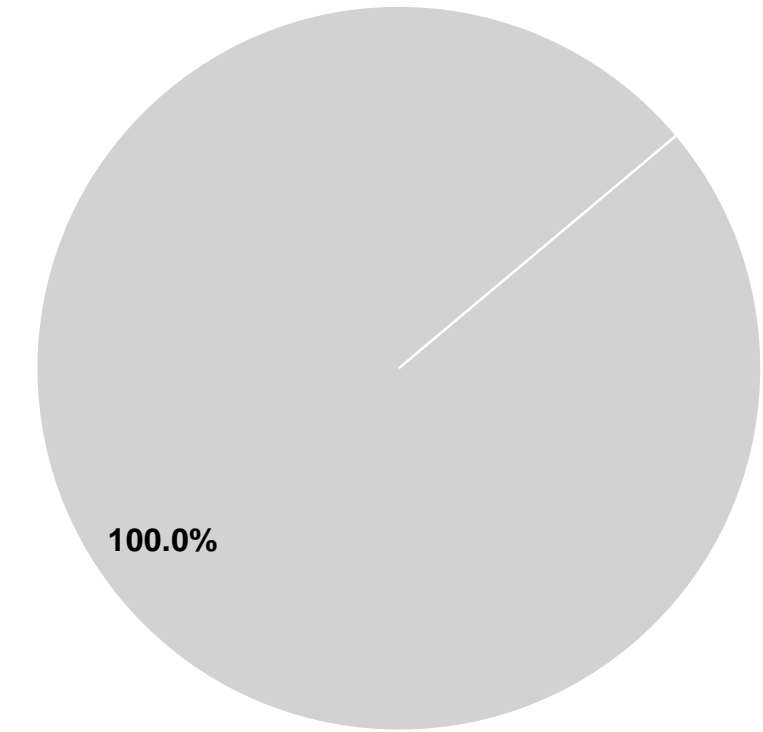
Sources of Capital Funds Expended

Fare Revenues	\$0	0.0%
Local Funds	\$0	0.0%
State Funds	\$911,143	100.0%
Federal Assistance	\$0	0.0%
Other Funds	\$0	0.0%
Total Capital Funds Expended	\$911,143	100.0%

Operating Funding Sources



Capital Funding Sources



Modal Characteristics

Operation Characteristics

Vehicles Operated at Maximum Service

Mode	Directly Operated	Purchased Transportation	Operating Expenses	Fare Revenues	Uses of Capital Funds	Annual Unlinked Trips	Annual Vehicle Revenue Miles	Annual Vehicle Revenue Hours	Average Fleet Age in Years ¹
Demand Response	-	3	\$341,473	\$53,985	\$0	15,715	59,157	4,626	4.8
Bus	-	1	\$189,705	\$22,202	\$911,143	29,805	61,844	3,132	4.5
Total	-	4	\$531,178	\$76,187	\$911,143	45,520	121,001	7,758	

Performance Measures

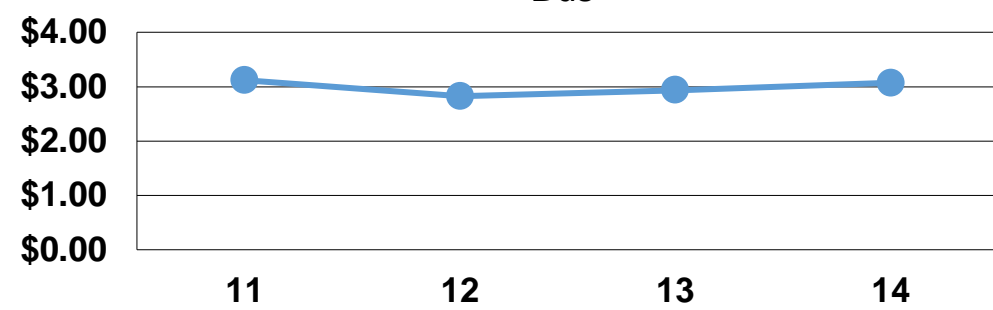
Service Efficiency

Mode	Operating Expenses per Vehicle Revenue Mile	Operating Expenses per Vehicle Revenue Hour
Demand Response	\$5.77	\$73.82
Bus	\$3.07	\$60.57
Total	\$4.39	\$68.47

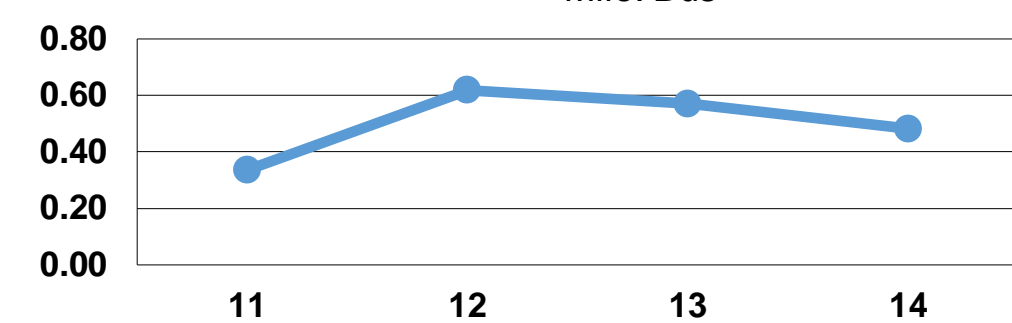
Service Effectiveness

Mode	Operating Expenses per Unlinked Passenger Trip	Unlinked Trips per Vehicle Revenue Mile	Unlinked Trips per Vehicle Revenue Hour
Demand Response	\$21.73	0.3	3.4
Bus	\$6.36	0.5	9.5
Total	\$11.67	0.4	5.9

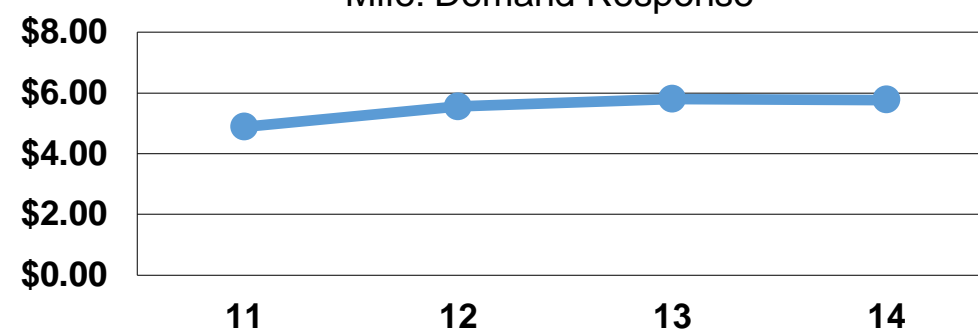
Operating Expense per Vehicle Revenue Mile: Bus



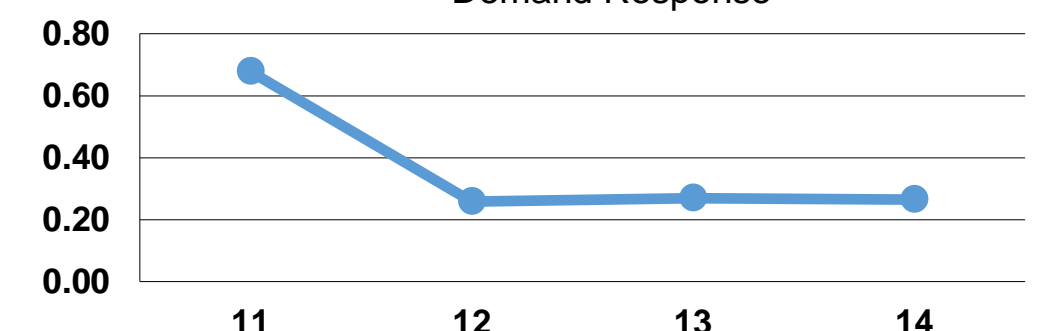
Unlinked Passenger Trips per Vehicle Revenue Mile: Bus



Unlinked Passenger Trips per Vehicle Revenue Mile: Demand Response



Operating Expense per Vehicle Revenue Mile: Demand Response



Notes:

¹Demand Response - Taxi (DT) and non-dedicated fleets do not report fleet age data.