

**General Information**

**Federally Recognized Tribal Statistical Areas**

320 Yurok Reservation, CA

**Service Consumption**

5,005 Annual Unlinked Trips (UPT)

**Service Supplied**

147,762 Annual Vehicle Revenue Miles (VRM)  
7,154 Annual Vehicle Revenue Hours (VRH)

**Database Information**

NTDID: 99262

Reporter Type: Tribal Reporter

**Financial Information**

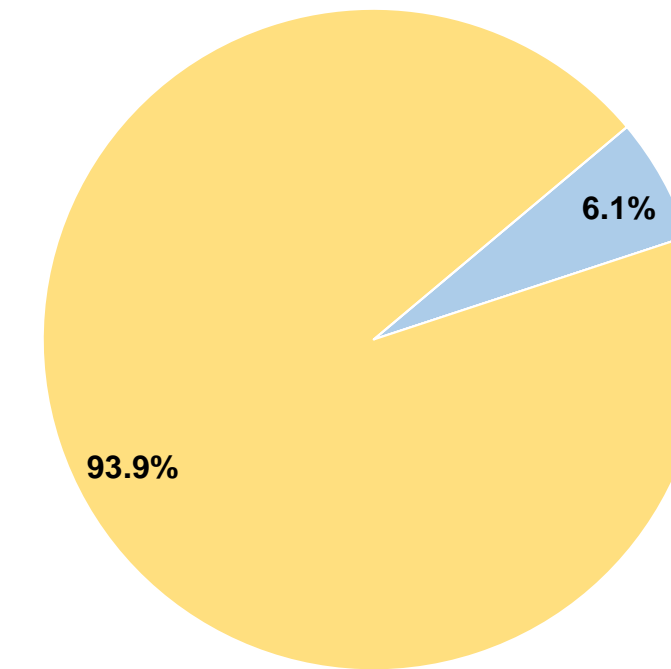
**Sources of Operating Funds Expended**

Fare Revenues	\$14,505	6.1%
Local Funds	\$0	0.0%
State Funds	\$0	0.0%
Federal Assistance	\$225,036	93.9%
Other Funds	\$0	0.0%
<b>Total Operating Funds Expended</b>	<b>\$239,541</b>	<b>100.0%</b>

**Sources of Capital Funds Expended**

Fare Revenues	\$0
Local Funds	\$0
State Funds	\$0
Federal Assistance	\$0
Other Funds	\$0
<b>Total Capital Funds Expended</b>	<b>\$0</b>

**Operating Funding Sources**



**Modal Characteristics**

**Operation Characteristics**

**Vehicles Operated at Maximum Service**

Mode	Directly Operated	Purchased Transportation	Operating Expenses	Fare Revenues	Uses of Capital Funds	Annual Unlinked Trips	Annual Vehicle Revenue Miles	Annual Vehicle Revenue Hours	Average Fleet Age in Years <sup>1</sup>
Bus	3	-	\$239,541	\$14,505	\$0	5,005	147,762	7,154	3.7
<b>Total</b>	<b>3</b>	<b>-</b>	<b>\$239,541</b>	<b>\$14,505</b>	<b>\$0</b>	<b>5,005</b>	<b>147,762</b>	<b>7,154</b>	

**Performance Measures**

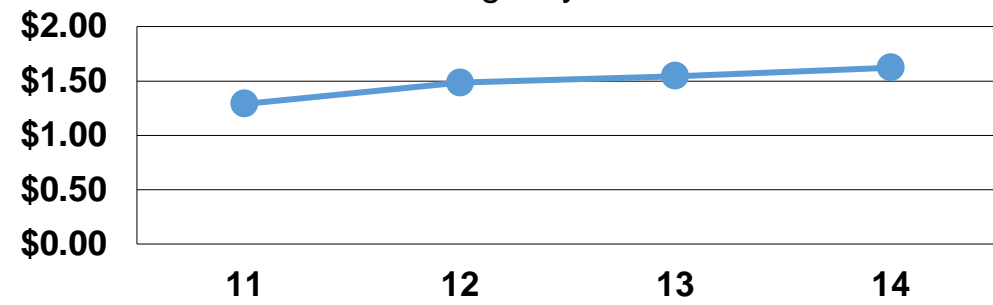
**Service Efficiency**

Mode	Operating Expenses per Vehicle Revenue Mile	Operating Expenses per Vehicle Revenue Hour
Bus	\$1.62	\$33.48
<b>Total</b>	<b>\$1.62</b>	<b>\$33.48</b>

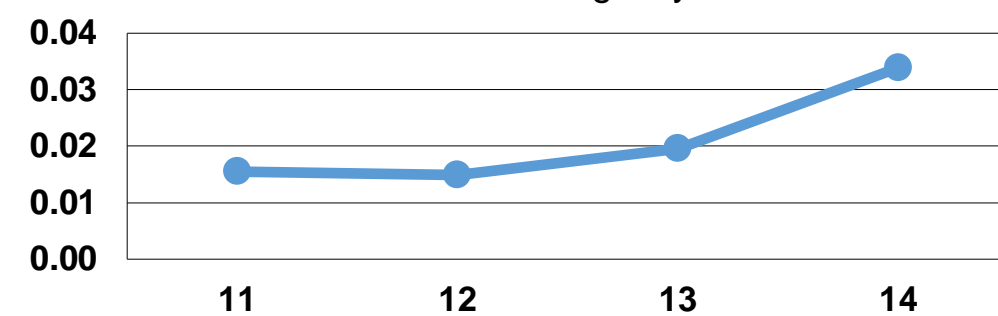
**Service Effectiveness**

Mode	Operating Expenses per Unlinked Passenger Trip	Unlinked Trips per Vehicle Revenue Mile	Unlinked Trips per Vehicle Revenue Hour
Bus	\$47.86	0.0	0.7
<b>Total</b>	<b>\$47.86</b>	<b>0.0</b>	<b>0.7</b>

Operating Expense per Vehicle Revenue Mile: Agency Total



Unlinked Passenger Trips per Vehicle Revenue Mile: Agency Total



**Notes:**

<sup>1</sup>Demand Response - Taxi (DT) and non-dedicated fleets do not report fleet age data.