

# San Carlos Apache Tribe (SCAT)

2014 Annual Agency Profile

P.O.Box 871  
Peridot, AZ 85542

Compliance Officer: Mrs. Patricia McBrayer  
928-475-5011

## General Information

### Federally Recognized Tribal Statistical Areas

234 San Carlos Reservation, AZ

### Service Consumption

52,630 Annual Unlinked Trips (UPT)

### Service Supplied

402,015 Annual Vehicle Revenue Miles (VRM)

17,497 Annual Vehicle Revenue Hours (VRH)

### Database Information

NTDID: 99286

Reporter Type: Tribal Reporter

## Financial Information

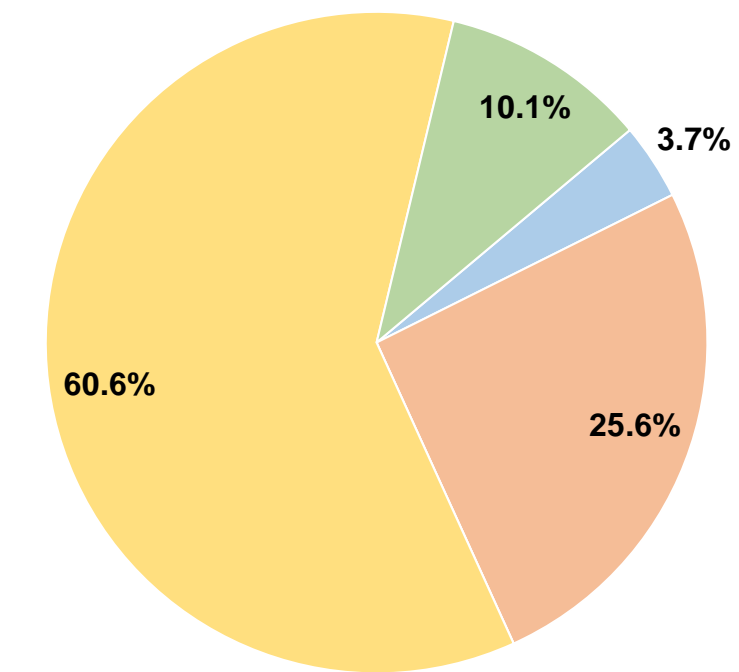
### Sources of Operating Funds Expended

Fare Revenues	\$35,424	3.7%
Local Funds	\$242,113	25.6%
State Funds	\$0	0.0%
Federal Assistance	\$573,341	60.6%
Other Funds	\$96,000	10.1%
<b>Total Operating Funds Expended</b>	<b>\$946,878</b>	<b>100.0%</b>

### Sources of Capital Funds Expended

Fare Revenues	\$0
Local Funds	\$0
State Funds	\$0
Federal Assistance	\$0
Other Funds	\$0
<b>Total Capital Funds Expended</b>	<b>\$0</b>

### Operating Funding Sources



## Modal Characteristics

### Operation Characteristics

#### Vehicles Operated at Maximum Service

Mode	Directly Operated	Purchased Transportation	Operating Expenses	Fare Revenues	Uses of Capital Funds	Annual Unlinked Trips	Annual Vehicle Revenue Miles	Annual Vehicle Revenue Hours	Average Fleet Age in Years <sup>1</sup>
Bus	20	-	\$946,878	\$35,424	\$0	52,630	402,015	17,497	3.8
<b>Total</b>	<b>20</b>	<b>-</b>	<b>\$946,878</b>	<b>\$35,424</b>	<b>\$0</b>	<b>52,630</b>	<b>402,015</b>	<b>17,497</b>	

### Performance Measures

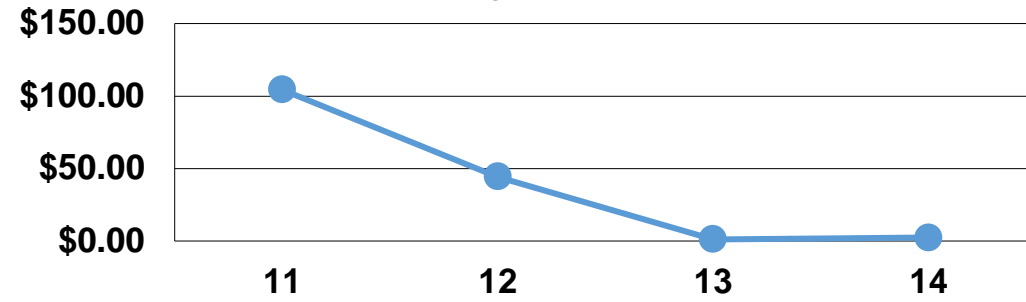
#### Service Efficiency

Mode	Operating Expenses per Vehicle Revenue Mile	Operating Expenses per Vehicle Revenue Hour
Bus	\$2.36	\$54.12
<b>Total</b>	<b>\$2.36</b>	<b>\$54.12</b>

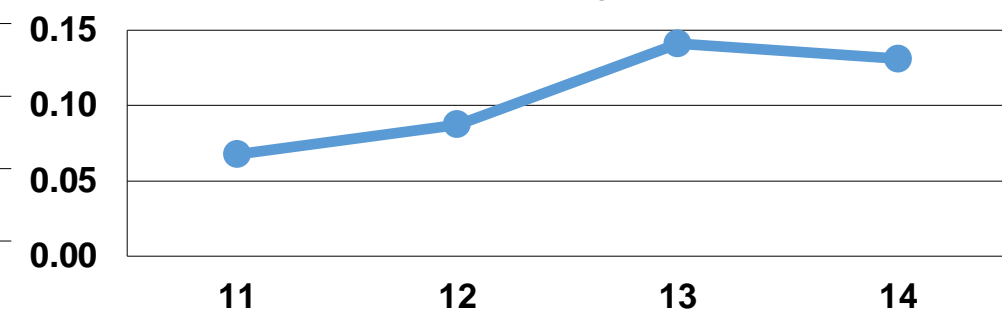
#### Service Effectiveness

Mode	Operating Expenses per Unlinked Passenger Trip	Unlinked Trips per Vehicle Revenue Mile	Unlinked Trips per Vehicle Revenue Hour
Bus	\$17.99	0.1	3.0
<b>Total</b>	<b>\$17.99</b>	<b>0.1</b>	<b>3.0</b>

Operating Expense per Vehicle Revenue Mile: Agency Total



Unlinked Passenger Trips per Vehicle Revenue Mile: Agency Total



#### Notes:

<sup>1</sup>Demand Response - Taxi (DT) and non-dedicated fleets do not report fleet age data.