

General Information

Federally Recognized Tribal Statistical Areas

24 Blue Lake Rancheria and Off-Reservation Trust Land, CA

Service Consumption

19,660 Annual Unlinked Trips (UPT)

Service Supplied

43,540 Annual Vehicle Revenue Miles (VRM)

2,072 Annual Vehicle Revenue Hours (VRH)

Database Information

NTDID: 99292

Reporter Type: Tribal Reporter

Financial Information

Sources of Operating Funds Expended

Fare Revenues	\$13,954	12.8%
Local Funds	\$35,398	32.5%
State Funds	\$0	0.0%
Federal Assistance	\$59,561	54.7%
Other Funds	\$0	0.0%

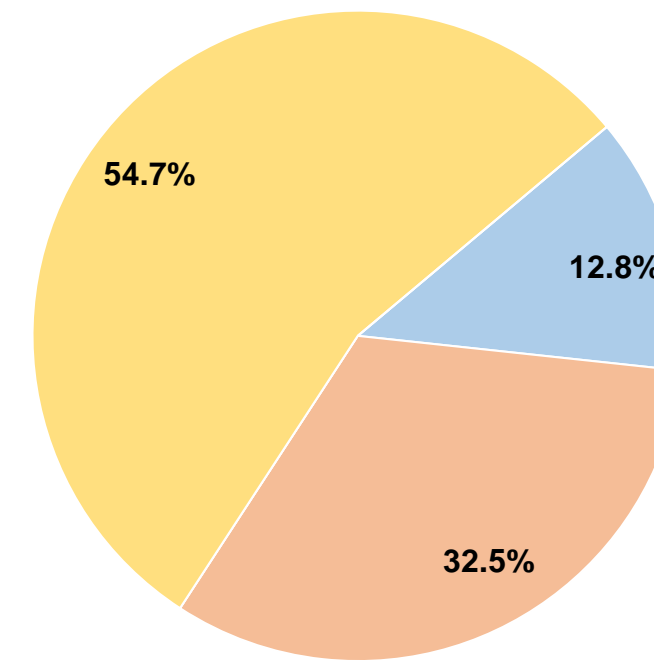
Total Operating Funds Expended \$108,913 100.0%

Sources of Capital Funds Expended

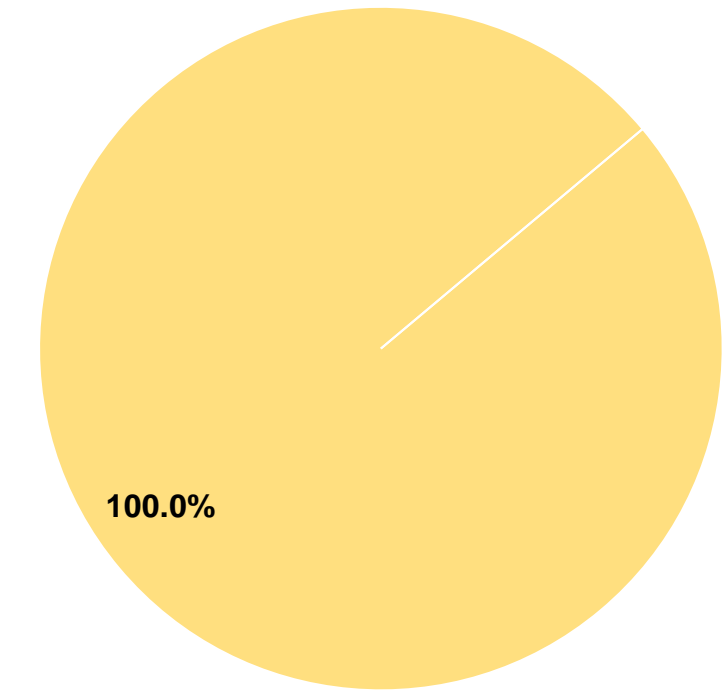
Fare Revenues	\$0	0.0%
Local Funds	\$0	0.0%
State Funds	\$0	0.0%
Federal Assistance	\$127,597	100.0%
Other Funds	\$0	0.0%

Total Capital Funds Expended \$127,597 100.0%

Operating Funding Sources



Capital Funding Sources



Modal Characteristics

Operation Characteristics

Vehicles Operated at Maximum Service

Mode	Directly Operated	Purchased Transportation	Operating Expenses	Fare Revenues	Uses of Capital Funds	Annual Unlinked Trips	Annual Vehicle Revenue Miles	Annual Vehicle Revenue Hours	Average Fleet Age in Years ¹
Bus	2	-	\$108,913	\$13,954	\$127,597	19,660	43,540	2,072	3.7
Total	2	-	\$108,913	\$13,954	\$127,597	19,660	43,540	2,072	

Performance Measures

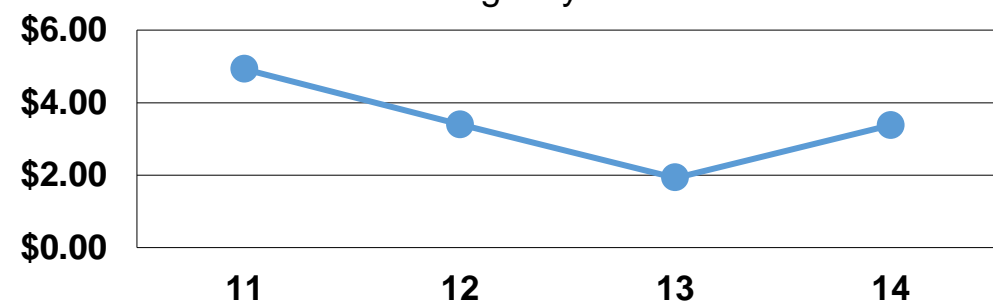
Service Efficiency

Mode	Operating Expenses per Vehicle Revenue Mile	Operating Expenses per Vehicle Revenue Hour
Bus	\$2.50	\$52.56
Total	\$2.50	\$52.56

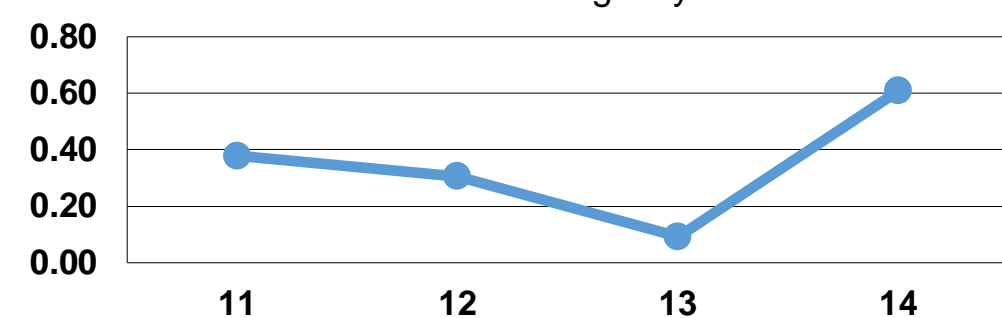
Service Effectiveness

Mode	Operating Expenses per Unlinked Passenger Trip	Unlinked Trips per Vehicle Revenue Mile	Unlinked Trips per Vehicle Revenue Hour
Bus	\$5.54	0.5	9.5
Total	\$5.54	0.5	9.5

Operating Expense per Vehicle Revenue Mile: Agency Total



Unlinked Passenger Trips per Vehicle Revenue Mile: Agency Total



Notes:

¹Demand Response - Taxi (DT) and non-dedicated fleets do not report fleet age data.