

General Information

Urbanized Area (UZA) Statistics - 2010 Census

441 Bangor, ME
 43 Square Miles
 61,210 Population
 441 Pop. Rank out of 498 UZAs

Other UZAs Served

0 Maine Non-UZA

Service Area Statistics

29 Square Miles
 55,500 Population

Service Consumption

888,223 Annual Unlinked Trips (UPT)

Service Supplied

602,553 Annual Vehicle Revenue Miles (VRM)
 47,210 Annual Vehicle Revenue Hours (VRH)

Database Information

NTDID: 10096

Reporter Type: Reduced Reporter

Financial Information

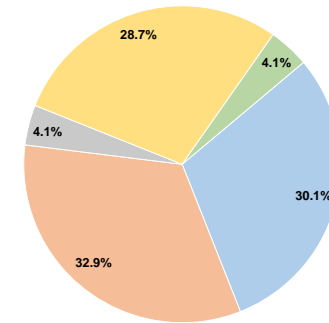
Sources of Operating Funds Expended

Fare Revenues	\$742,960	30.1%
Local Funds	\$812,800	32.9%
State Funds	\$101,110	4.1%
Federal Assistance	\$707,748	28.7%
Other Funds	\$102,361	4.1%
Total Operating Funds Expended	\$2,466,979	100.0%

Sources of Capital Funds Expended

Fare Revenues	\$0
Local Funds	\$0
State Funds	\$0
Federal Assistance	\$0
Other Funds	\$0
Total Capital Funds Expended	\$0

Operating Funding Sources



Modal Characteristics

Operation Characteristics

Vehicles Operated at Maximum Service

Mode	Directly Operated	Purchased Transportation	Operating Expenses	Fare Revenues	Uses of Capital Funds	Annual Unlinked Trips	Annual Vehicle Revenue Miles	Annual Vehicle Revenue Hours	Average Fleet Age in Years ¹
Bus	14	-	\$2,433,121	\$742,960	\$0	888,223	602,553	47,210	10.6
Total	14	-	\$2,433,121	\$742,960	\$0	888,223	602,553	47,210	

Performance Measures

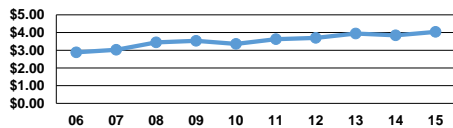
Service Efficiency

Mode	Operating Expenses per Vehicle Revenue Mile	Operating Expenses per Vehicle Revenue Hour
Bus	\$4.04	\$51.54
Total	\$4.04	\$51.54

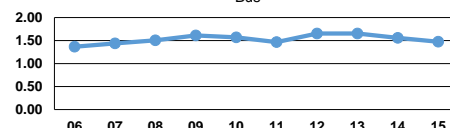
Service Effectiveness

Mode	Operating Expenses per Unlinked Passenger Trip	Unlinked Trips per Vehicle Revenue Mile	Unlinked Trips per Vehicle Revenue Hour
Bus	\$2.74	1.5	18.8
Total	\$2.74	1.5	18.8

Operating Expense per Vehicle Revenue Mile: Bus



Unlinked Passenger Trips per Vehicle Revenue Mile: Bus



Notes:

¹Demand Response - Taxi (DT) and non-dedicated fleets do not report fleet age data.

*This agency has a purchased transportation relationship in which they buy service from Penquis Community Action Program (NTDID: 10134), and in which the data are captured in another report for mode DR/PT.