

General Information

Urbanized Area (UZA) Statistics - 2010 Census

209 Manchester, NH
 86 **Square Miles**
 158,377 **Population**
 209 **Pop. Rank out of 498 UZAs**

Other UZAs Served

0 New Hampshire Non-UZA; 329 Portsmouth, NH-ME; 10 Boston, MA-NH-RI

Service Area Statistics

517 **Square Miles**
 290,127 **Population**

Service Consumption

2,817 **Annual Unlinked Trips (UPT)**

Service Supplied

177,007 **Annual Vehicle Revenue Miles (VRM)**
 4,380 **Annual Vehicle Revenue Hours (VRH)**

Database Information

NTDID: 11154

Reporter Type: Reduced Reporter

Financial Information

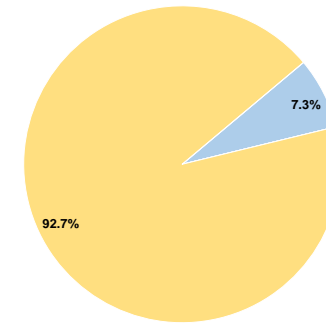
Sources of Operating Funds Expended

Fare Revenues	\$40,359	7.3%
Local Funds	\$0	0.0%
State Funds	\$0	0.0%
Federal Assistance	\$511,903	92.7%
Other Funds	\$0	0.0%
Total Operating Funds Expended	\$552,262	100.0%

Sources of Capital Funds Expended

Fare Revenues	\$0
Local Funds	\$0
State Funds	\$0
Federal Assistance	\$0
Other Funds	\$0
Total Capital Funds Expended	\$0

Operating Funding Sources



Modal Characteristics

Operation Characteristics

Vehicles Operated at Maximum Service

Mode	Directly Operated	Purchased Transportation	Operating Expenses	Fare Revenues	Uses of Capital Funds	Annual Unlinked Trips	Annual Vehicle Revenue Miles	Annual Vehicle Revenue Hours	Average Fleet Age in Years ¹
Commuter Bus	2	-	\$552,262	\$40,359	\$0	2,817	177,007	4,380	3.5
Total	2	-	\$552,262	\$40,359	\$0	2,817	177,007	4,380	

Performance Measures

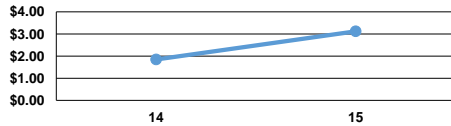
Service Efficiency

Mode	Operating Expenses per Vehicle Revenue Mile	Operating Expenses per Vehicle Revenue Hour
Commuter Bus	\$3.12	\$126.09
Total	\$3.12	\$126.09

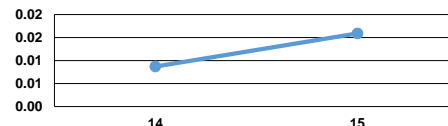
Service Effectiveness

Mode	Operating Expenses per Unlinked Passenger Trip	Unlinked Trips per Vehicle Revenue Mile	Unlinked Trips per Vehicle Revenue Hour
Commuter Bus	\$196.05	0.0	0.6
Total	\$196.05	0.0	0.6

Operating Expense per Vehicle Revenue Mile: Commuter Bus



Unlinked Passenger Trips per Vehicle Revenue Mile: Commuter Bus



Notes:

¹Demand Response - Taxi (DT) and non-dedicated fleets do not report fleet age data.

*This agency has a purchased transportation relationship in which they sell service to New Hampshire Department of Transportation (NTDID: 1R04), and in which the data are captured in this report for mode CB/DO.