

**General Information**

**Urbanized Area (UZA) Statistics - 2010 Census**

1 New York-Newark, NY-NJ-CT  
 3,450 **Square Miles**  
 18,351,295 **Population**  
 1 **Pop. Rank out of 498 UZAs**

**Service Area Statistics**

2 **Square Miles**  
 32,359 **Population**

**Service Consumption**

5,875 **Annual Unlinked Trips (UPT)**

**Service Supplied**

23,562 **Annual Vehicle Revenue Miles (VRM)**  
 2,904 **Annual Vehicle Revenue Hours (VRH)**

**Database Information**

NTDID: 20089

Reporter Type: Reduced Reporter

**Financial Information**

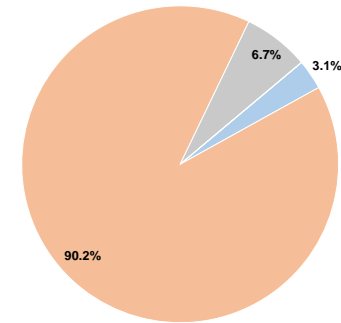
**Sources of Operating Funds Expended**

Fare Revenues	\$7,156	3.1%
Local Funds	\$210,935	90.2%
State Funds	\$15,767	6.7%
Federal Assistance	\$0	0.0%
Other Funds	\$0	0.0%
<b>Total Operating Funds Expended</b>	<b>\$233,858</b>	<b>100.0%</b>

**Sources of Capital Funds Expended**

Fare Revenues	\$0
Local Funds	\$0
State Funds	\$0
Federal Assistance	\$0
Other Funds	\$0
<b>Total Capital Funds Expended</b>	<b>\$0</b>

**Operating Funding Sources**



**Modal Characteristics**

**Operation Characteristics**

**Vehicles Operated at Maximum Service**

Mode	Directly Operated	Purchased Transportation	Operating Expenses	Fare Revenues	Uses of Capital Funds	Annual Unlinked Trips	Annual Vehicle Revenue Miles	Annual Vehicle Revenue Hours	Average Fleet Age in Years <sup>1</sup>
Bus	1	-	\$233,858	\$7,156	\$0	5,875	23,562	2,904	7.0
<b>Total</b>	<b>1</b>	<b>-</b>	<b>\$233,858</b>	<b>\$7,156</b>	<b>\$0</b>	<b>5,875</b>	<b>23,562</b>	<b>2,904</b>	

**Performance Measures**

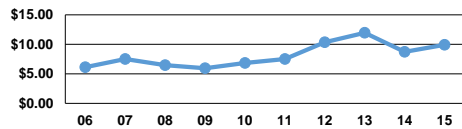
**Service Efficiency**

Mode	Operating Expenses per Vehicle Revenue Mile	Operating Expenses per Vehicle Revenue Hour
Bus	\$9.93	\$80.53
<b>Total</b>	<b>\$9.93</b>	<b>\$80.53</b>

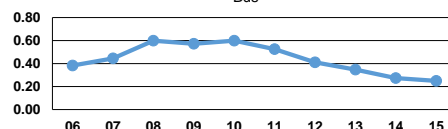
**Service Effectiveness**

Mode	Operating Expenses per Unlinked Passenger Trip	Unlinked Trips per Vehicle Revenue Mile	Unlinked Trips per Vehicle Revenue Hour
Bus	\$39.81	0.2	2.0
<b>Total</b>	<b>\$39.81</b>	<b>0.2</b>	<b>2.0</b>

Operating Expense per Vehicle Revenue Mile: Bus



Unlinked Passenger Trips per Vehicle Revenue Mile: Bus



**Notes:**

<sup>1</sup>Demand Response - Taxi (DT) and non-dedicated fleets do not report fleet age data.