

**General Information**

**Urbanized Area (UZA) Statistics - 2010 Census**

67 Albany-Schenectady, NY  
 296 **Square Miles**  
 594,962 **Population**  
 67 **Pop. Rank out of 498 UZAs**

**Service Area Statistics**

1 **Square Miles**  
 5,196 **Population**

**Service Consumption**

5,015 **Annual Unlinked Trips (UPT)**

**Service Supplied**

16,924 **Annual Vehicle Revenue Miles (VRM)**  
 1,290 **Annual Vehicle Revenue Hours (VRH)**

**Database Information**

**NTDID:** 20213

**Reporter Type:** Reduced Reporter

**Financial Information**

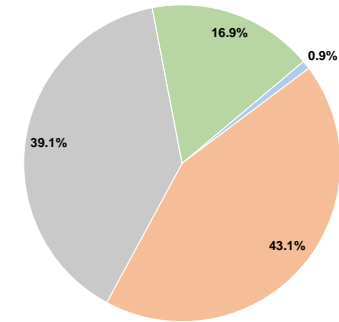
**Sources of Operating Funds Expended**

Fare Revenues	\$369	0.9%
Local Funds	\$18,211	43.1%
State Funds	\$16,494	39.1%
Federal Assistance	\$0	0.0%
Other Funds	\$7,142	16.9%
<b>Total Operating Funds Expended</b>	<b>\$42,216</b>	<b>100.0%</b>

**Sources of Capital Funds Expended**

Fare Revenues	\$0
Local Funds	\$0
State Funds	\$0
Federal Assistance	\$0
Other Funds	\$0
<b>Total Capital Funds Expended</b>	<b>\$0</b>

**Operating Funding Sources**



**Modal Characteristics**

**Operation Characteristics**

**Vehicles Operated at Maximum Service**

Mode	Directly Operated	Purchased Transportation	Operating Expenses	Fare Revenues	Uses of Capital Funds	Annual Unlinked Trips	Annual Vehicle Revenue Miles	Annual Vehicle Revenue Hours	Average Fleet Age in Years <sup>1</sup>
Bus	2	-	\$42,216	\$369	\$0	5,015	16,924	1,290	3.5
<b>Total</b>	<b>2</b>	<b>-</b>	<b>\$42,216</b>	<b>\$369</b>	<b>\$0</b>	<b>5,015</b>	<b>16,924</b>	<b>1,290</b>	

**Performance Measures**

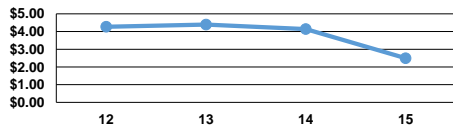
**Service Efficiency**

Mode	Operating Expenses per Vehicle Revenue Mile	Operating Expenses per Vehicle Revenue Hour
Bus	\$2.49	\$32.73
<b>Total</b>	<b>\$2.49</b>	<b>\$32.73</b>

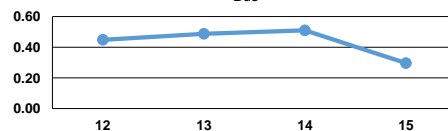
**Service Effectiveness**

Mode	Operating Expenses per Unlinked Passenger Trip	Unlinked Trips per Vehicle Revenue Mile	Unlinked Trips per Vehicle Revenue Hour
Bus	\$8.42	0.3	3.9
<b>Total</b>	<b>\$8.42</b>	<b>0.3</b>	<b>3.9</b>

Operating Expense per Vehicle Revenue Mile: Bus



Unlinked Passenger Trips per Vehicle Revenue Mile: Bus



**Notes:**

<sup>1</sup>Demand Response - Taxi (DT) and non-dedicated fleets do not report fleet age data.