

General Information

Urbanized Area Statistics - 2010 Census

230 Frederick, MD
 73 Square Miles
 141,576 Population
 230 Pop. Rank out of 498 UZAs
Other UZAs Served
 0 Maryland Non-UZA

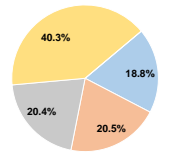
Service Consumption
 3,851,094 Annual Passenger Miles (PMT)
 761,098 Annual Unlinked Trips (UPT)
 2,714 Average Weekday Unlinked Trips
 1,341 Average Saturday Unlinked Trips
 Average Sunday Unlinked Trips

Database Information
 NTDID: 30072
 Reporter Type: Full Reporter

Financial Information

Sources of Operating Funds Expended
 Fare Revenues \$1,092,366 18.8%
 Local Funds \$1,192,451 20.5%
 State Funds \$1,191,352 20.4%
 Federal Assistance \$2,349,674 40.3%
 Other Funds \$0 0.0%
Total Operating Funds Expended \$5,825,843 100.0%

Operating Funding Sources



Sources of Capital Funds Expended
 Fare Revenues \$0
 Local Funds \$0
 State Funds \$0
 Federal Assistance \$0
 Other Funds \$0
Total Capital Funds Expended \$0

Service Area Statistics

18 Square Miles
 68,369 Population

Service Supplied

1,108,172 Annual Vehicle Revenue Miles (VRM)
 78,604 Annual Vehicle Revenue Hours (VRH)
 34 Vehicles Operated in Maximum Service (VOMS)
 56 Vehicles Available for Maximum Service (VAMS)

Modal Characteristics

Modal Overview	Vehicles Operated in Maximum Service		Uses of Capital Funds				Total
	Directly Operated	Purchased Transportation	Revenue Vehicles	Systems and Guideways	Facilities and Stations	Other	
Bus	16	-	\$0	\$0	\$0	\$0	\$0
Demand Response	18	-	\$0	\$0	\$0	\$0	\$0
Total	34	-	\$0	\$0	\$0	\$0	\$0

Summary of Operating Expenses (OE)

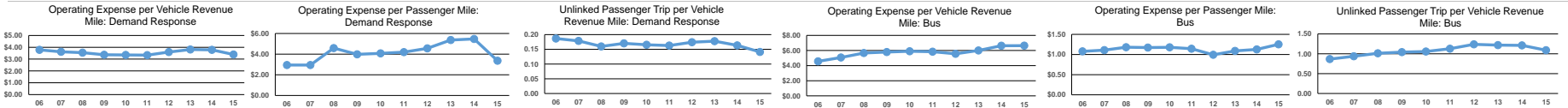
Salary, Wages, Benefits	\$4,720,175	81.0%
Materials and Supplies	\$1,032,700	17.7%
Purchased Transportation	\$0	0.0%
Other Operating Expenses	\$72,968	1.3%
Total Operating Expenses	\$5,825,843	100.0%
Reconciling OE Cash Expenditures		
Purchased Transportation (Reported Separately)		

Operation Characteristics

Mode	Operating Expenses	Fare Revenues	Uses of Capital Funds	Annual Passenger Miles	Annual Unlinked Trips	Annual Vehicle Revenue Miles	Annual Vehicle Revenue Hours	Fixed Guideway Directional Route Miles	Vehicles Available for Maximum Service	Vehicles Operated in Maximum Service	Percent Spare Vehicles	Average Fleet Age in Years ¹
Bus	\$4,227,691	\$654,796	\$0	3,375,246	694,495	636,601	56,280	0.0	31	16	48.4%	8.9
Demand Response	\$1,598,152	\$437,570	\$0	475,848	66,603	471,571	22,324	0.0	25	18	28.0%	6.2
Total	\$5,825,843	\$1,092,366	\$0	3,851,094	761,098	1,108,172	78,604	0.0	56	34	39.3%	

Performance Measures

Mode	Service Efficiency		Service Effectiveness	
	Operating Expenses per Vehicle Revenue Mile	Operating Expenses per Vehicle Revenue Hour	Operating Expenses per Unlinked Passenger Trip	Unlinked Trips per Vehicle Revenue Mile
Bus	\$6.64	\$75.12	\$1.25	1.1
Demand Response	\$3.39	\$71.59	\$3.36	0.1
Total	\$5.26	\$74.12	\$1.51	0.7



Notes:
¹Demand Response - Taxi (DT) and non-dedicated fleets do not report fleet age data.