

General Information

Urbanized Area Statistics - 2010 Census

64 Sarasota-Bradenton, FL
 327 Square Miles
 643,260 Population
 64 Pop. Rank out of 498 UZAs

Other UZAs Served
 0 Florida Non-UZA

Service Area Statistics

743 Square Miles
 322,833 Population

Service Consumption

8,318,739 Annual Passenger Miles (PMT)
 1,862,306 Annual Unlinked Trips (UPT)
 5,979 Average Weekday Unlinked Trips
 4,572 Average Saturday Unlinked Trips
 1,726 Average Sunday Unlinked Trips

Service Supplied

1,966,141 Annual Vehicle Revenue Miles (VRM)
 140,109 Annual Vehicle Revenue Hours (VRH)
 45 Vehicles Operated in Maximum Service (VOMS)
 65 Vehicles Available for Maximum Service (VAMS)

Database Information

NTDID: 40026
 Reporter Type: Full Reporter

Financial Information

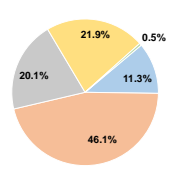
Sources of Operating Funds Expended

Fare Revenues	\$1,303,739	11.3%
Local Funds	\$5,295,190	46.1%
State Funds	\$2,312,647	20.1%
Federal Assistance	\$2,517,593	21.9%
Other Funds	\$57,793	0.5%
Total Operating Funds Expended	\$11,486,962	100.0%

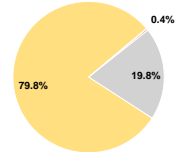
Sources of Capital Funds Expended

Fare Revenues	\$0	0.0%
Local Funds	\$48,102	0.4%
State Funds	\$2,122,870	19.8%
Federal Assistance	\$8,552,153	79.8%
Other Funds	\$0	0.0%
Total Capital Funds Expended	\$10,723,125	100.0%

Operating Funding Sources



Capital Funding Sources



Summary of Operating Expenses (OE)

Salary, Wages, Benefits	\$8,279,392	72.1%
Materials and Supplies	\$2,544,514	22.2%
Purchased Transportation	\$0	0.0%
Other Operating Expenses	\$663,056	5.8%
Total Operating Expenses	\$11,486,962	100.0%

Reconciling OE Cash Expenditures
 Purchased Transportation
 (Reported Separately)

Modal Characteristics

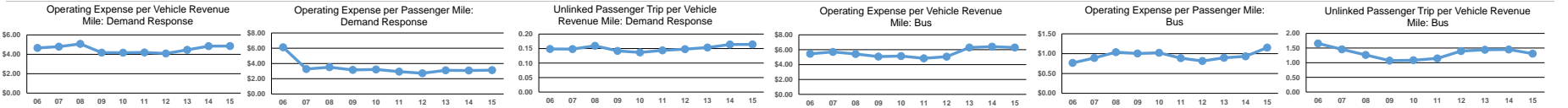
Modal Overview	Vehicles Operated in Maximum Service		Uses of Capital Funds				Total
	Directly Operated	Purchased Transportation	Revenue Vehicles	Systems and Guideways	Facilities and Stations	Other	
Bus	23	-	\$2,541,691	\$79,919	\$6,092,973	\$1,670,891	\$10,385,474
Demand Response	22	-	\$310,981	\$26,669	\$0	\$0	\$337,650
Total	45	-	\$2,852,672	\$106,588	\$6,092,973	\$1,670,891	\$10,723,124

Operation Characteristics

Mode	Operating Expenses	Fare Revenues	Uses of Capital Funds	Annual Passenger Miles	Annual Unlinked Trips	Annual Vehicle Revenue Miles	Annual Vehicle Revenue Hours	Fixed Guideway Directional Route Miles	Vehicles Available for Maximum Service	Vehicles Operated in Maximum Service	Percent Spare Vehicles	Average Fleet Age in Years ¹
Bus	\$8,480,255	\$1,001,463	\$10,385,474	7,357,672	1,760,490	1,345,968	95,373	0.0	36	23	36.1%	5.9
Demand Response	\$3,006,707	\$302,276	\$337,650	961,067	101,816	620,173	44,736	0.0	29	22	24.1%	3.3
Total	\$11,486,962	\$1,303,739	\$10,723,124	8,318,739	1,862,306	1,966,141	140,109	0.0	65	45	30.8%	

Performance Measures

Mode	Service Efficiency		Service Effectiveness	
	Operating Expenses per Vehicle Revenue Mile	Operating Expenses per Vehicle Revenue Hour	Operating Expenses per Unlinked Passenger Mile	Operating Expenses per Unlinked Passenger Trip
Bus	\$6.30	\$88.92	\$1.15	\$4.82
Demand Response	\$4.85	\$67.21	\$3.13	\$29.53
Total	\$5.84	\$81.99	\$1.38	\$6.17



¹Notes:
¹Demand Response - Taxi (DT) and non-dedicated fleets do not report fleet age data.