

General Information

Urbanized Area (UZA) Statistics - 2010 Census

486 Hinesville, GA
 31 Square Miles
 51,456 Population
 486 Pop. Rank out of 498 UZAs

Service Area Statistics

20 Square Miles
 31,932 Population

Service Consumption

14,680 Annual Unlinked Trips (UPT)

Service Supplied

106,859 Annual Vehicle Revenue Miles (VRM)
 8,383 Annual Vehicle Revenue Hours (VRH)

Database Information

NTDID: 40193

Reporter Type: Reduced Reporter

Financial Information

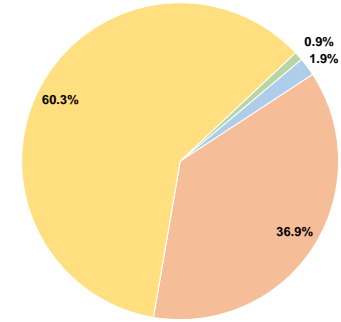
Sources of Operating Funds Expended

Fare Revenues	\$12,680	1.9%
Local Funds	\$249,001	36.9%
State Funds	\$0	0.0%
Federal Assistance	\$406,569	60.3%
Other Funds	\$6,002	0.9%
Total Operating Funds Expended	\$674,252	100.0%

Sources of Capital Funds Expended

Fare Revenues	\$0
Local Funds	\$0
State Funds	\$0
Federal Assistance	\$0
Other Funds	\$0
Total Capital Funds Expended	\$0

Operating Funding Sources



Modal Characteristics

Operation Characteristics

Vehicles Operated at Maximum Service

Mode	Directly Operated	Purchased Transportation	Operating Expenses	Fare Revenues	Uses of Capital Funds	Annual Unlinked Trips	Annual Vehicle Revenue Miles	Annual Vehicle Revenue Hours	Average Fleet Age in Years ¹
Bus	-	3	\$674,252	\$12,680	\$0	14,680	106,859	8,383	4.9
Total	-	3	\$674,252	\$12,680	\$0	14,680	106,859	8,383	

Performance Measures

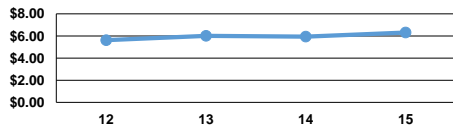
Service Efficiency

Mode	Operating Expenses per Vehicle Revenue Mile	Operating Expenses per Vehicle Revenue Hour
Bus	\$6.31	\$80.43
Total	\$6.31	\$80.43

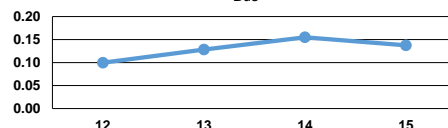
Service Effectiveness

Mode	Operating Expenses per Unlinked Passenger Trip	Unlinked Trips per Vehicle Revenue Mile	Unlinked Trips per Vehicle Revenue Hour
Bus	\$45.93	0.1	1.8
Total	\$45.93	0.1	1.8

Operating Expense per Vehicle Revenue Mile: Bus



Unlinked Passenger Trips per Vehicle Revenue Mile: Bus



Notes:

¹Demand Response - Taxi (DT) and non-dedicated fleets do not report fleet age data.