

**General Information**

**Urbanized Area Statistics - 2010 Census**  
 25 Cleveland, OH  
 772 Square Miles  
 1,780,673 Population  
 25 Pop. Rank out of 498 UZAs

**Other UZAs Served**  
 71 Akron, OH; 0 Ohio Non-UZA

**Service Consumption**  
 555,121 Annual Passenger Miles (PMT)  
 67,479 Annual Unlinked Trips (UPT)  
 249 Average Weekday Unlinked Trips<sup>a</sup>  
 20 Average Saturday Unlinked Trips<sup>a</sup>  
 Average Sunday Unlinked Trips<sup>a</sup>

**Database Information**  
 NTDID: 50198  
 Reporter Type: Full Reporter

**Service Area Statistics**  
 425 Square Miles  
 174,091 Population

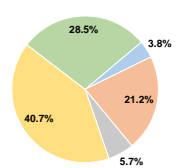
**Service Supplied**  
 503,389 Annual Vehicle Revenue Miles (VRM)  
 34,896 Annual Vehicle Revenue Hours (VRH)  
 18 Vehicles Operated in Maximum Service (VOMS)  
 23 Vehicles Available for Maximum Service (VAMS)

**Financial Information**

**Sources of Operating Funds Expended**

Fare Revenues	\$67,439	3.8%
Local Funds	\$372,268	21.2%
State Funds	\$100,390	5.7%
Federal Assistance	\$712,908	40.7%
Other Funds	\$498,988	28.5%
<b>Total Operating Funds Expended</b>	<b>\$1,751,993</b>	<b>100.0%</b>

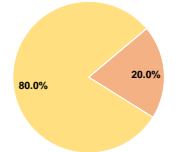
**Operating Funding Sources**



**Sources of Capital Funds Expended**

Fare Revenues	\$0	0.0%
Local Funds	\$32,437	20.0%
State Funds	\$0	0.0%
Federal Assistance	\$129,749	80.0%
Other Funds	\$0	0.0%
<b>Total Capital Funds Expended</b>	<b>\$162,186</b>	<b>100.0%</b>

**Capital Funding Sources**



**Modal Characteristics**

Modal Overview	Vehicles Operated in Maximum Service		Uses of Capital Funds					Total
	Directly Operated	Purchased Transportation	Revenue Vehicles	Systems and Guideways	Facilities and Stations	Other		
Bus	5	-	\$0	\$0	\$0	\$0	\$0	
Demand Response - Taxi	-	3	\$0	\$0	\$0	\$0	\$0	
Demand Response	10	-	\$148,736	\$0	\$0	\$13,450	\$162,186	
<b>Total</b>	<b>15</b>	<b>3</b>	<b>\$148,736</b>	<b>\$0</b>	<b>\$0</b>	<b>\$13,450</b>	<b>\$162,186</b>	

**Summary of Operating Expenses (OE)**

Salary, Wages, Benefits	\$1,311,681	74.9%
Materials and Supplies	\$130,027	7.4%
Purchased Transportation	\$228,326	13.0%
Other Operating Expenses	\$81,957	4.7%
<b>Total Operating Expenses</b>	<b>\$1,751,991</b>	<b>100.0%</b>

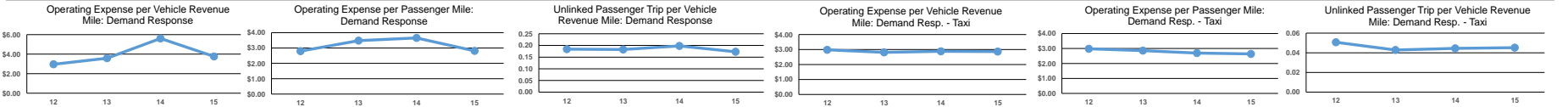
Reconciling OE Cash Expenditures  
 Purchased Transportation (Reported Separately)

**Operation Characteristics**

Mode	Operating Expenses	Fare Revenues	Uses of Capital Funds	Annual Passenger Miles	Annual Unlinked Trips	Annual Vehicle Revenue Miles	Annual Vehicle Revenue Hours	Fixed Guideway Directional Route Miles	Vehicles Available for Maximum Service	Vehicles Operated in Maximum Service	Percent Spare Vehicles	Average Fleet Age in Years <sup>1</sup>
Bus	\$545,644	\$36,180	\$0	120,628	19,239	163,274	13,720	0.0	7	5	28.6%	5.3
Demand Response - Taxi	\$236,309	\$0	\$0	89,533	3,729	82,493	3,476	0.0	3	3	0.0%	
Demand Response	\$970,038	\$40,139	\$162,186	344,960	44,511	257,622	17,700	0.0	13	10	23.1%	4.5
<b>Total</b>	<b>\$1,751,991</b>	<b>\$76,319</b>	<b>\$162,186</b>	<b>555,121</b>	<b>67,479</b>	<b>503,389</b>	<b>34,896</b>	<b>0.0</b>	<b>23</b>	<b>18</b>	<b>21.7%</b>	

**Performance Measures**

Mode	Service Efficiency		Service Effectiveness		
	Operating Expenses per Vehicle Revenue Mile	Operating Expenses per Vehicle Revenue Hour	Operating Expenses per Passenger Mile	Operating Expenses per Unlinked Passenger Trip	Unlinked Trips per Vehicle Revenue Mile
Bus	\$3.34	\$39.77	\$4.52	\$28.36	0.1
Demand Response - Taxi	\$2.86	\$67.98	\$2.64	\$63.37	0.0
Demand Response	\$3.77	\$54.80	\$2.81	\$21.79	0.2
<b>Total</b>	<b>\$3.48</b>	<b>\$50.21</b>	<b>\$3.16</b>	<b>\$25.96</b>	<b>0.1</b>



**Notes:** <sup>a</sup>Average Unlinked Trips not available for Demand Response Taxi.  
<sup>1</sup>Demand Response - Taxi (DT) and non-dedicated fleets do not report fleet age data.  
<sup>2</sup>Excludes data for purchased transportation filed separately.  
<sup>3</sup>This agency has a purchased transportation relationship in which they sell service to Brunswick Transit Alternative (NTDID: 50143), and in which the data are captured in another report for mode MB/DO.