

General Information

Urbanized Area (UZA) Statistics - 2010 Census

49 New Orleans, LA
 251 Square Miles
 899,703 Population
 49 Pop. Rank out of 498 UZAs

Service Area Statistics

24 Square Miles
 45,408 Population

Service Consumption

78,064 Annual Unlinked Trips (UPT)

Service Supplied

137,488 Annual Vehicle Revenue Miles (VRM)
 6,802 Annual Vehicle Revenue Hours (VRH)

Database Information

NTDID: 60058

Reporter Type: Reduced Reporter

Financial Information

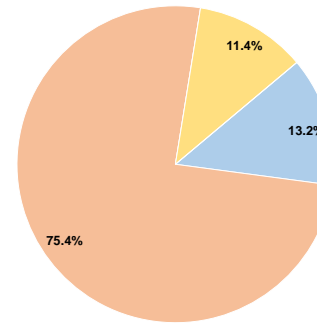
Sources of Operating Funds Expended

Fare Revenues	\$72,920	13.2%
Local Funds	\$416,015	75.4%
State Funds	\$0	0.0%
Federal Assistance	\$62,607	11.4%
Other Funds	\$0	0.0%
Total Operating Funds Expended	\$551,542	100.0%

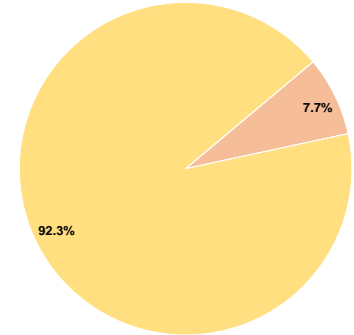
Sources of Capital Funds Expended

Fare Revenues	\$0	0.0%
Local Funds	\$61,963	7.7%
State Funds	\$0	0.0%
Federal Assistance	\$739,666	92.3%
Other Funds	\$0	0.0%
Total Capital Funds Expended	\$801,629	100.0%

Operating Funding Sources



Capital Funding Sources



Modal Characteristics

Operation Characteristics

Vehicles Operated at Maximum Service

Mode	Directly Operated	Purchased Transportation	Operating Expenses	Fare Revenues	Uses of Capital Funds	Annual Unlinked Trips	Annual Vehicle Revenue Miles	Annual Vehicle Revenue Hours	Average Fleet Age in Years ¹
Bus	4	-	\$551,542	\$72,920	\$801,629	78,064	137,488	6,802	5.3
Total	4	-	\$551,542	\$72,920	\$801,629	78,064	137,488	6,802	

Performance Measures

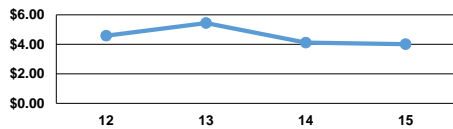
Service Efficiency

Mode	Operating Expenses per Vehicle Revenue Mile	Operating Expenses per Vehicle Revenue Hour
Bus	\$4.01	\$81.09
Total	\$4.01	\$81.09

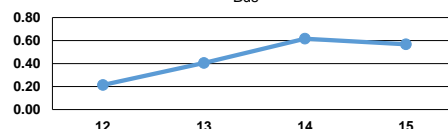
Service Effectiveness

Mode	Operating Expenses per Unlinked Passenger Trip	Unlinked Trips per Vehicle Revenue Mile	Unlinked Trips per Vehicle Revenue Hour
Bus	\$7.07	0.6	11.5
Total	\$7.07	0.6	11.5

Operating Expense per Vehicle Revenue Mile: Bus



Unlinked Passenger Trips per Vehicle Revenue Mile: Bus



Notes:

¹Demand Response - Taxi (DT) and non-dedicated fleets do not report fleet age data.