

General Information

Urbanized Area Statistics - 2010 Census

290 Iowa City, IA
46 Square Miles
106,621 Population
290 Pop. Rank out of 498 UZAs

Service Consumption

2,050,869 Annual Passenger Miles (PMT)
585,973 Annual Unlinked Trips (UPT)
2,138 Average Weekday Unlinked Trips
786 Average Saturday Unlinked Trips
Average Sunday Unlinked Trips

Database Information

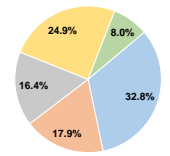
NTDID: 70030
Reporter Type: Full Reporter

Financial Information

Sources of Operating Funds Expended

Fare Revenues	\$545,415	32.8%
Local Funds	\$297,811	17.9%
State Funds	\$272,290	16.4%
Federal Assistance	\$413,088	24.9%
Other Funds	\$132,425	8.0%
Total Operating Funds Expended	\$1,661,029	100.0%

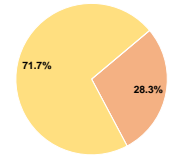
Operating Funding Sources



Sources of Capital Funds Expended

Fare Revenues	\$0	0.0%
Local Funds	\$2,070,797	28.3%
State Funds	\$0	0.0%
Federal Assistance	\$5,235,418	71.7%
Other Funds	\$0	0.0%
Total Capital Funds Expended	\$7,306,215	100.0%

Capital Funding Sources



Summary of Operating Expenses (OE)

Salary, Wages, Benefits	\$1,080,256	78.5%
Materials and Supplies	\$233,554	17.0%
Purchased Transportation	\$0	0.0%
Other Operating Expenses	\$61,935	4.5%
Total Operating Expenses	\$1,375,745	100.0%
Reconciling OE Cash Expenditures Purchased Transportation (Reported Separately)	\$285,284 *	

Service Area Statistics

12 Square Miles
19,219 Population

Service Supplied

182,791 Annual Vehicle Revenue Miles (VRM)
15,424 Annual Vehicle Revenue Hours (VRH)
7 Vehicles Operated in Maximum Service (VOMS)
10 Vehicles Available for Maximum Service (VAMS)

Modal Characteristics

Modal Overview

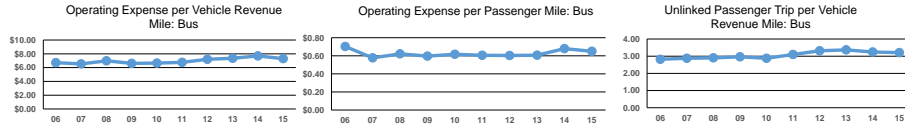
Mode	Vehicles Operated in Maximum Service		Revenue Vehicles	Uses of Capital Funds			Total
	Directly Operated	Purchased Transportation		Systems and Guideways	Facilities and Stations	Other	
Bus	7	-	\$62,200	\$0	\$7,244,015	\$0	\$7,306,215
Total	7	-	\$62,200	\$0	\$7,244,015	\$0	\$7,306,215

Operation Characteristics

Mode	Operating Expenses	Fare Revenues	Uses of Capital Funds	Annual Passenger Miles	Annual Unlinked Trips	Annual Vehicle Revenue Miles	Annual Vehicle Revenue Hours	Fixed Guideway Directional Route Miles	Vehicles Available for Maximum Service	Vehicles Operated in Maximum Service	Percent Spare Vehicles	Average Fleet Age in Years ¹
Bus	\$1,332,699	\$521,555	\$7,306,215	2,050,869	585,973	182,791	15,424	0.0	10	7	30.0%	11.8
Total	\$1,332,699	\$521,555	\$7,306,215	2,050,869	585,973	182,791	15,424	0.0	10	7	30.0%	11.8

Performance Measures

Mode	Service Efficiency		Mode	Service Effectiveness			
	Operating Expenses per Vehicle Revenue Mile	Operating Expenses per Vehicle Revenue Hour		Operating Expenses per Passenger Mile	Operating Expenses per Unlinked Passenger Trip	Unlinked Trips per Vehicle Revenue Mile	Unlinked Trips per Vehicle Revenue Hour
Bus	\$7.29	\$86.40	Bus	\$0.65	\$2.27	3.2	38.0
Total	\$7.29	\$86.40	Total	\$0.65	\$2.27	3.2	38.0



Notes:
¹Demand Response - Taxi (DT) and non-dedicated fleets do not report fleet age data.
 *This agency has a purchased transportation relationship in which they buy service from Johnson County SEATS (NTDID: 70045), and in which the data are captured in another report for mode DR/PT.